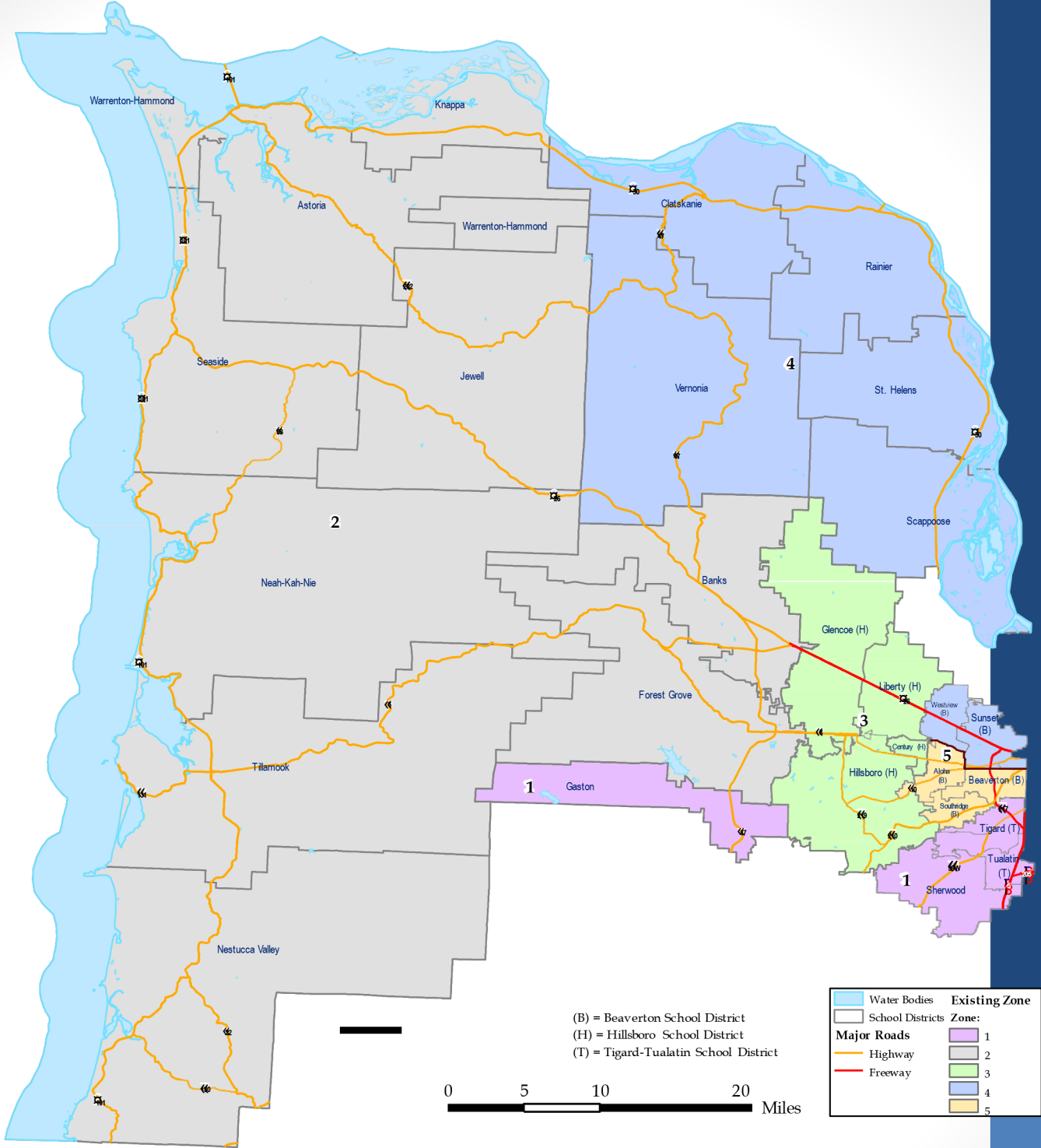


# Northwest Regional Education Service District

## Board Zone Redistricting: Existing Zones



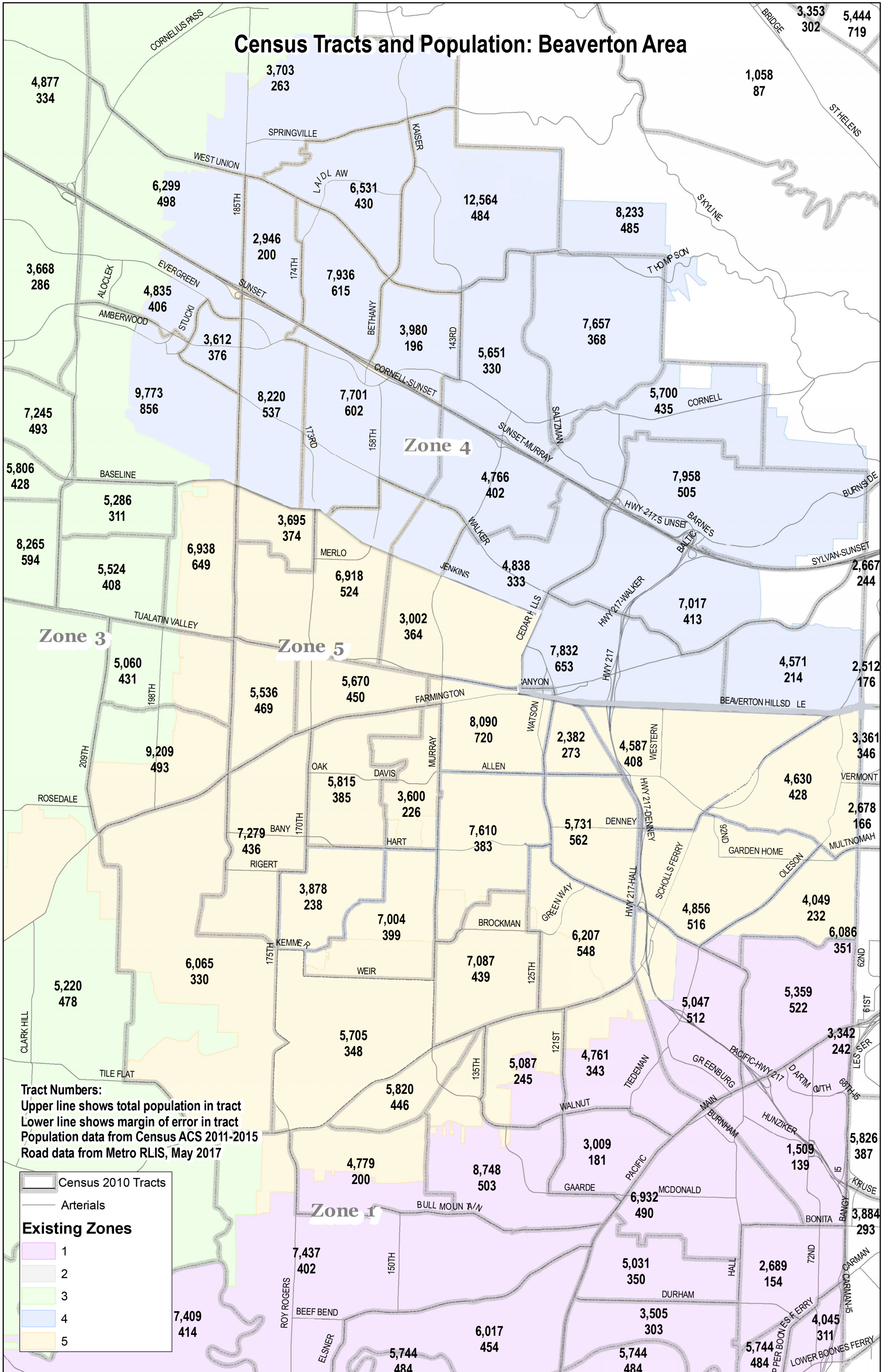
Zone (Existing)	Total Pop.	Pop. 13+	Non-Hispanic (NH)	White alone, NH	Black alone, NH	Am'n or AK Native, NH	Indian alone, NH	Asian alone, NH	Ntv. Hawaiian or Pacific Islander, NH	Other race alone, NH	Multirace, NH	Hispanic
1	110,686	82,511	97,663	86,178	1,496		576	5,233	772	154	3,254	13,023
2	101,871	78,424	86,649	81,538	417		742	1,401	212	115	2,224	15,222
3	125,029	91,329	98,565	82,157	1,812		709	9,421	485	210	3,771	26,464
4	159,746	122,227	142,502	123,209	2,010		993	10,535	484	282	4,989	17,244
5	145,153	107,618	126,680	96,290	3,485		683	19,838	550	283	5,551	18,473

Population Research Center  
March 2017

Sources:  
Census 2010 SFI  
Census TIGER 2016  
RLS March 2017

Portland State UNIVERSITY

# Census Tracts and Population: Beaverton Area



**Tract Numbers:**  
 Upper line shows total population in tract  
 Lower line shows margin of error in tract  
 Population data from Census ACS 2011-2015  
 Road data from Metro RLIS, May 2017

**Census 2010 Tracts**

Arterials

**Existing Zones**

- 1
- 2
- 3
- 4
- 5

**Zone 1**

**Zone 4**

**Zone 3**

**Zone 5**