



Northwest Regional  
Education Service District



# 2024-25 Local Service Plan

A framework for our partnership with school districts in  
Clatsop, Columbia, Tillamook and Washington counties

# Table of Contents

## Local Service Plan

<b>About the Local Service Plan</b> .....	<b>3</b>
Service Area .....	4
Board of Directors.....	5
Key Staff Contacts .....	6
Timeline for Plan Development.....	7
How the Local Service Plan is Funded .....	8
<b>Core Services</b> .....	<b>9</b>
<b>Menu Services</b> .....	<b>12</b>
Administration.....	13
Early Learning.....	14
Instruction .....	15
K-12 Special Education.....	17
Technology.....	21
<b>Student Success Act Technical Assistance Plan</b> .....	<b>23</b>

## Appendix

<b>Proposed Resolution Authorizing NWRESD Local Service Plan for 2024-25</b> .....	<b>27</b>
<b>Grant Funded &amp; Value-Add Services</b> .....	<b>28</b>
<b>Financial Summary Information</b> .....	<b>33</b>
Core Services and County Allocations .....	33
Service Credits (Summary) .....	34
Service Credits (Detail).....	35



Cover photo: Students at Grant Watts Elementary School (part of the Scappoose School District) read a book together in the library. *Photo by Paje Stelling.*





# About the Local Service Plan

Oregon requires its 19 education service districts to submit a local service plan each year reflecting their state-mandated mission “to assist school districts and the Department of Education in achieving Oregon’s educational goals by providing equitable, high-quality, cost-effective and locally responsive educational services at a regional level.”

The local service plan is the framework for how we serve our 20 partner school districts in Clatsop,

Columbia, Tillamook and Washington counties. According to ORS 334.175, the local service plan must address special education services, technology support, school improvement services, and administrative services.

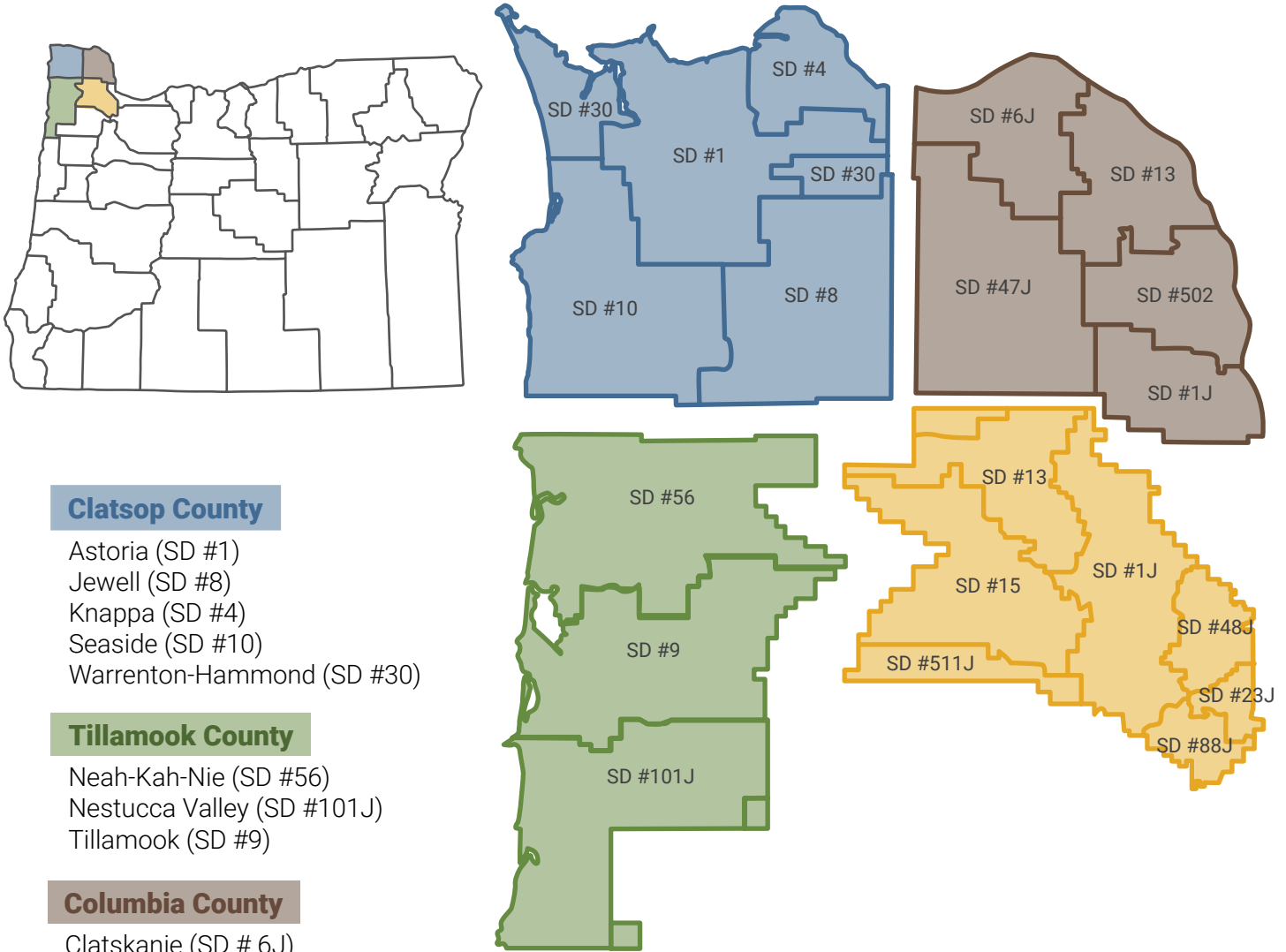
It must be approved by at least two thirds of our partner school district boards, representing at least 50% of the total number of students enrolled in our service area.



More than 100 children who experience blindness or vision impairment attended our second annual inclusive carnival in May of 2023. The event, which was held at South Meadows Middle School in Hillsboro, featured more than a dozen adaptive games, a mariachi band, goalball and a treat trot. *Photos by Tracey Goldner.*



# Service Area



### Clatsop County

- Astoria (SD #1)
- Jewell (SD #8)
- Knappa (SD #4)
- Seaside (SD #10)
- Warrenton-Hammond (SD #30)

### Tillamook County

- Neah-Kah-Nie (SD #56)
- Nestucca Valley (SD #101J)
- Tillamook (SD #9)

### Columbia County

- Clatskanie (SD # 6J)
- Rainier (SD #13)
- Scappoose (SD # 1J)
- St. Helens (SD #502)
- Vernonia (SD #47J)

### Washington County

- Banks (SD #13)
- Beaverton (SD #48J)
- Forest Grove (SD #15)
- Gaston (SD # 511J)
- Hillsboro (SD #1J)
- Sherwood (SD #88J)
- Tigard-Tualatin (SD #23J)





# Board of Directors



**Doug Dougherty, Vice Chair**  
Zone 2: Astoria, Banks, Forest Grove, Jewell, Knappa, Neah-Kah-Nie, Nestucca Valley, Seaside, Tillamook, Warrenton-Hammond



**Maureen Wolf, Vice Chair**  
At-Large



**Christine Riley**  
Zone 1: Gaston, Sherwood, Tigard-Tualatin



**Yadira Martinez**  
Zone 3: Hillsboro



**Tony Erickson**  
Zone 4: Beaverton (Sunset and Westview High School attendance areas), Clatskanie, Rainier, Scappoose, St. Helens, Vernonia



**Becky Tymchuk**  
Zone 5: Beaverton (Aloha, Beaverton, Mountainside and Southridge attendance areas)



**Ross Tomlin**  
Higher Education Position



**Ernest Stephens**  
Business Position



**Miriam Meneses-Rios**  
Social Service Position



# Key Staff Contacts



**Dan Goldman**

Superintendent

dgoldman@nwresd.k12.or.us



**Debbie Simons**

Chief Human Resources Officer

dsimons@nwresd.k12.or.us



**Jordan Ely**

Chief Financial Officer

jely@nwresd.k12.or.us



**Megan McCarter**

Chief Academic Officer

mmccarter@nwresd.k12.or.us



**Stuart Long**

Chief Information Officer

slong@nwresd.k12.or.us



**Stacy Rager**

Early Learning  
Executive Director

srager@nwresd.k12.or.us



**Cathleen Jensen**

K-12 Special Education  
Executive Director

cjensen@nwresd.k12.or.us



**John Peplinski**

Executive Director of  
Instructional Services

jpeplinski@nwresd.k12.or.us



**Sharif Zakir Liwaru**

Equity and Family  
Partnerships Director

sziwaru@nwresd.k12.or.us



**Kelsey Soltysiak**

Communications Director

ksoltysiak@nwresd.k12.or.us



**Lynne Griffin**

Clatsop Service Center  
Administrator

lgriffin@nwresd.k12.or.us



**Matt Doyle**

Columbia Service Center  
Administrator

mdoyle@nwresd.k12.or.us



**Kim Lyon**

Tillamook Service Center  
Administrator

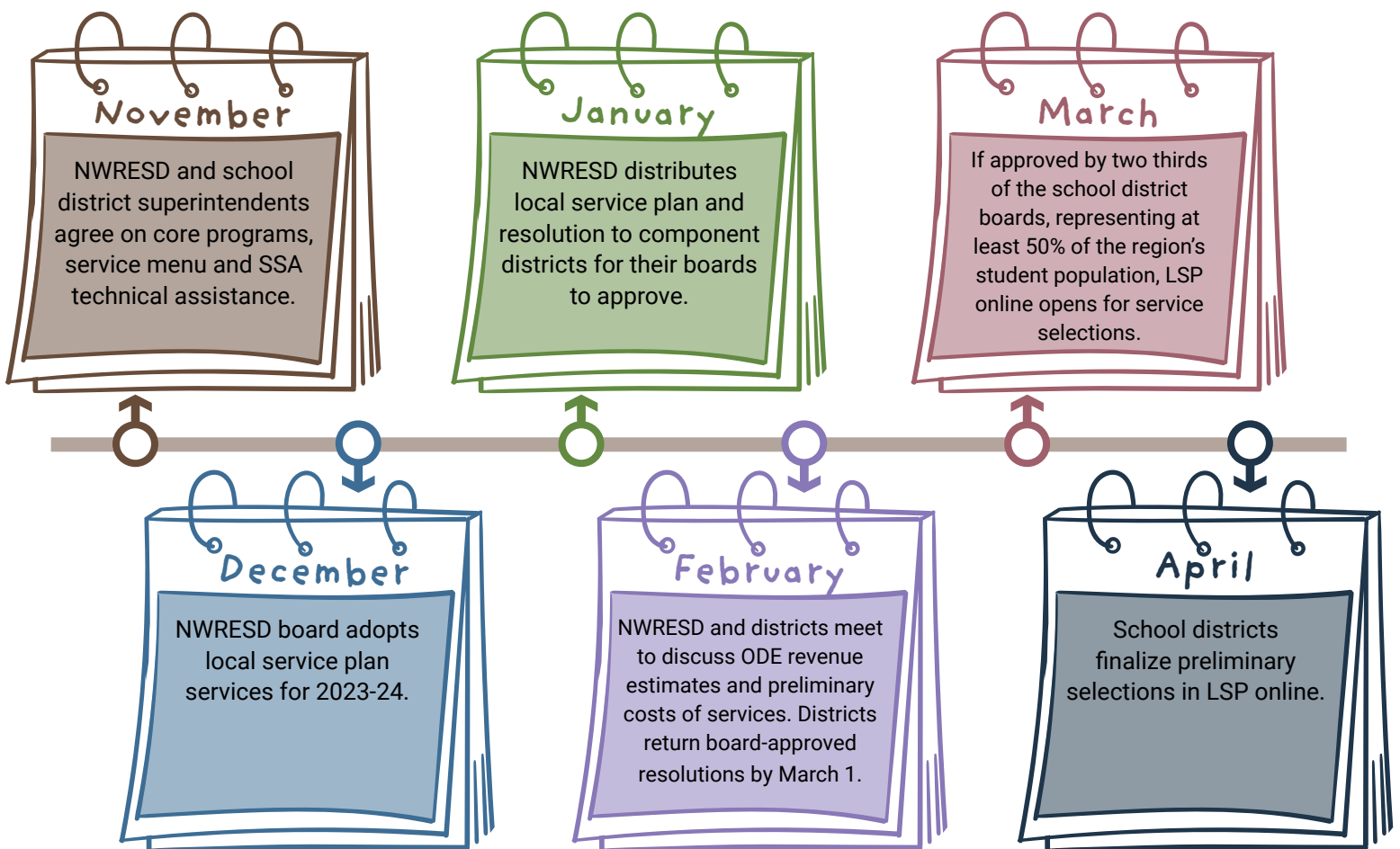
klyon@nwresd.k12.or.us



# Timeline for Plan Development

In early fall, school districts collaborate with NWRESD to design the local service plan (LSP). The LSP is then formally approved by school district superintendents,

NWRESD's board of directors, and the 20 regional school boards, according to the timeline below. Implementation begins the following school year.



# How the Local Service Plan is Funded

The State School Fund (SSF) is Oregon’s largest investment, equating to \$10.2 billion in the 2023-25 biennium. A share of 95.5% of the SSF goes directly to K-12 school districts and a share of 4.5% goes to education service districts for administering regional services.

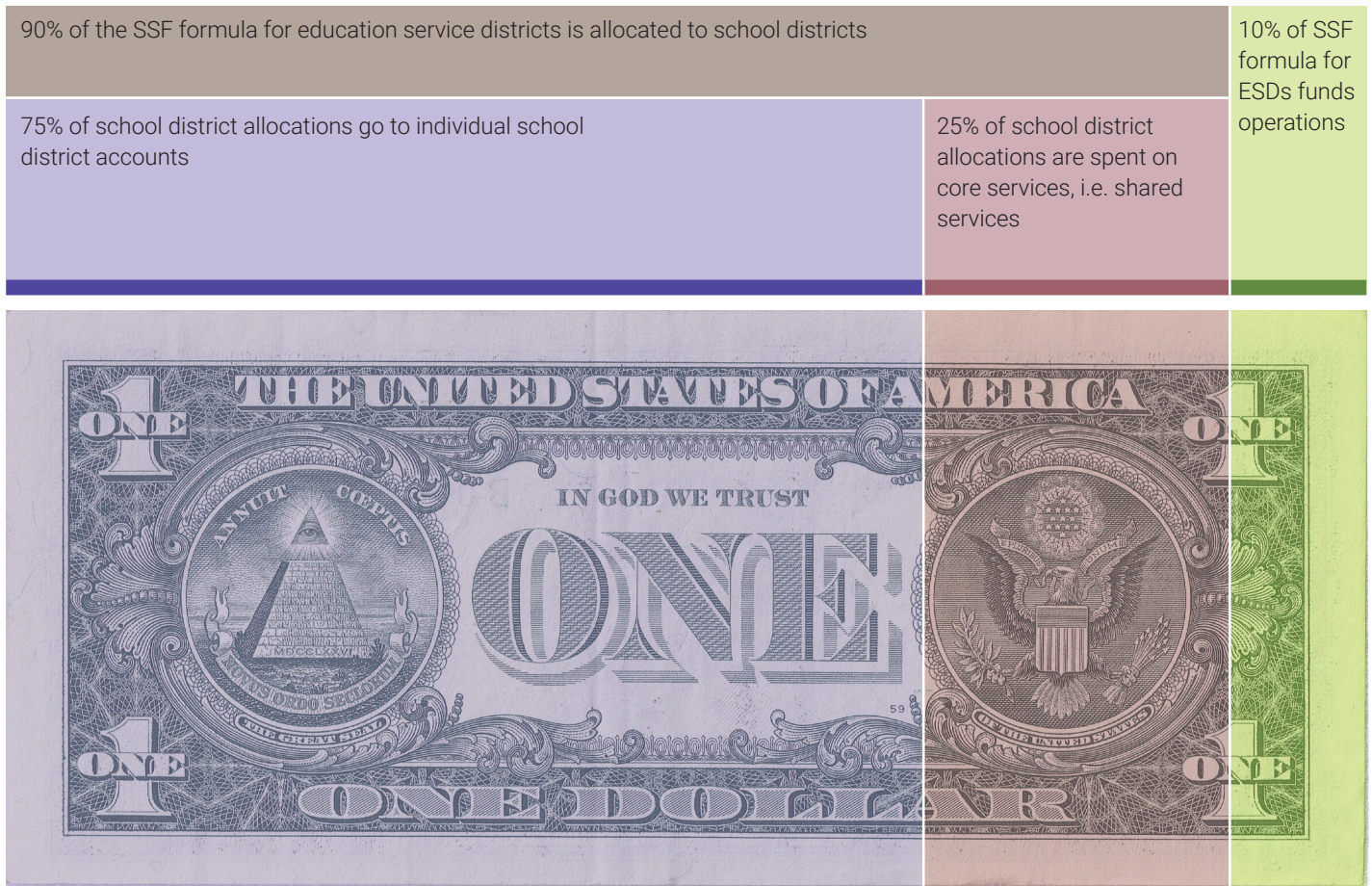
The state and local revenues within the SSF formula provide more than 80% of general operating dollars to school districts and education service districts statewide. For NWRES D specifically, the SSF formula accounts for roughly 22% of our total budgeted resources.

Of the SSF money we receive, 90% is allocated to districts based on weighted student population (ADMw) and 10% supports NWRES D operations.

Of the school district allocations, 75% goes directly to school district ESD accounts and 25% to core services.

School district ESD accounts can be used to purchase services through the local service plan menu. Money can also be flowed through to districts. Districts can also purchase services outside of their ESD accounts.

Core services, which are shared services available to all school districts, are first approved by component school district superintendents and then by component school district boards.







Recent graduate Hannah Freauf is unequivocal about the positive impact Pacific Academy has had on her life. “This school was really a turning point for me,” she says. Hannah volunteered to participate in the Care and Connection event held on Aug. 28. She met with students and answered their questions ahead of the first day of school. *Photo by Tracey Goldner.*

# Core Services

Core services are first approved by component school district superintendents and then by component school district boards. These services are available to all school districts and represent 25% of the local service plan allocations for school districts.



## County Allocations

Through core, each county subset of school districts receives flexible funding to support localized priorities agreed upon by the school district superintendents.

## Emergency Closure Network

We provide districts with access to an emergency communication system for sharing emergency information, school delays and closures with their communities and the local media.

## Grant Management

We provide grant writing and management to school districts seeking competitive grants, including state, federal and private grants. Grant writers connect with school district teams to envision, plan and convey projects and match them to grant opportunities. Support includes program design and strategy, connection to potential funders, and writing, editing, and submitting grant proposals.

## Regional Innovations and Professional Learning

Regional Innovations and Professional Learning are funds backed by Hillsboro and Beaverton School Districts (who are not participants in the core) that supplement several core and grant-funded services, including: 9th Grade Success Network; School Culture and Climate; Early Literacy Supports; Instructional Coaching Network; grant management; Career and College Readiness; Ion MTSS; STEM Hub; and Early Learning Hub. Read more about these services in the grant and value-add services section in the appendix.

## Cybersecurity Services

Cybersecurity services include advising on policy and procedure, security management of technology applications, and incident response during cyber threats and attacks.

## Forecast 5

We provide Forecast 5 analytics tools to help K-12 educational leaders leverage district, demographic and peer data to develop future focused strategies for managing limited resources, achieving education outcomes and improving academic ROI in today's challenging budget environment.

## Help Desk

We provide an on-demand, generalized support resource for district technology staff.

## Library Services (Follett Destiny Library, Resource Manager and Textbook)

We host and support Follett's Destiny Library Management System, which provides a full service suite of school library software for managing inventory, check in/out, fees, and users. Destiny is an internet-based library, textbook and resource management system designed specifically to support K-12 education. We provide software hosting, support, student information system integration and training.

## Network Security Services

A triage-based security team is available to work alongside district technology teams to analyze existing vulnerabilities, prioritize fixes, and assist with engineering support to help plan and address security vulnerabilities.

## Network Services

We keep districts connected to the internet with a full suite of network management and connectivity services. We provide a sustainable model that increases speed and redundancy while maintaining low costs for school districts.





## **Restraint & Seclusion Application Development**

The Restraint and Seclusion Application is a custom-built records management system to track all school incidents resulting in physical restraint and/or seclusion. The Oregon Department of Education (ODE) requires a precise count and reporting of these incidents based on a number of student criteria. This application provides a secure and permanent history of these records, along with calculation and exportation of all pertinent data to ODE.

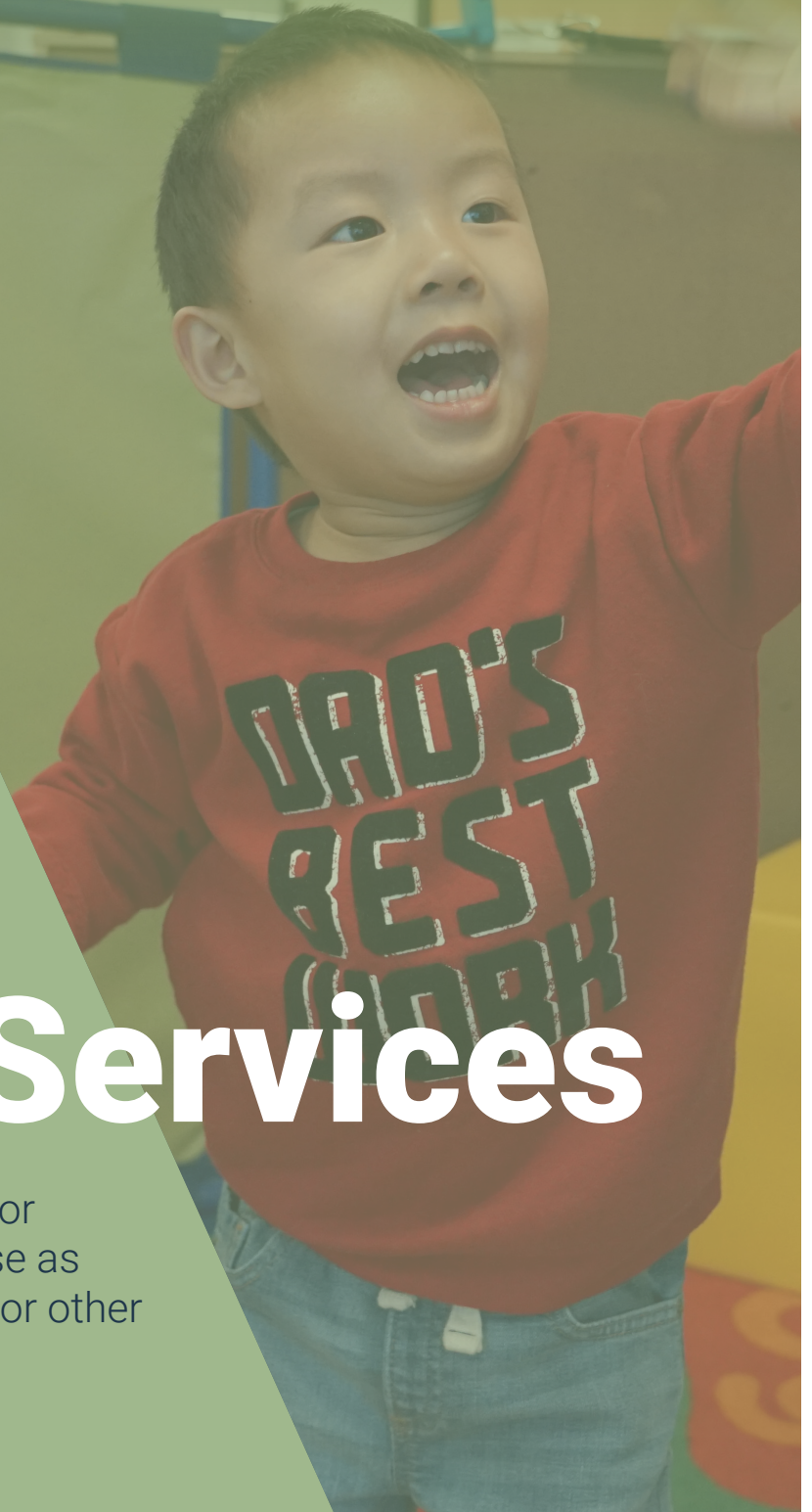
## **Technical Engineering Cooperative**

Component districts participate in the Technology Engineering Cooperative, which ensures engineers are always available to keep essential systems running smoothly. This also connects your technology staff with ESD engineering teams for escalation of critical issues and serves as an additional resource in a time of crisis.



A preschooler participates in circle time during a Friends and Me Playgroup hosted by NWRESD's Beaverton Early Childhood Center. The playgroups give students who are neurodivergent -- meaning they have autism, attention-deficit/hyperactivity disorder or other related conditions -- the opportunity to participate in a school-like environment.

*Photo by Tracey Goldner.*



# Menu Services

Menu services are available for individual districts to purchase as needed using service credits or other funding sources.





# Administration

## Communications

Districts can contract for dedicated support from a communications manager in increments of 0.25 FTE. The communications manager would work in the district to advise and execute communications strategy and serve as a public information officer. They would be a member of a larger communications team at NWRESD and have direct access to coaching, mentoring and support.

## Diverse Educator Pathways

Research shows academic and social emotional benefits for students who have access to educators who mirror their racial, cultural and linguistic identities. Yet, there is a severe shortage of linguistically and racially diverse educator talent in our state. To address this critical gap, the Diverse Educator Pathways Program partners with school districts to develop diverse talent pools, recruit future teachers and specialists and convene teacher candidates in a networked community. Participating prospective educators agree to interview with their home district upon completion of their licensure program.

## Executive Coaching

Executive coaching is available on a weekly, biweekly, once every three weeks or monthly basis. These sessions will be specifically tailored to the district's and superintendent's needs. Coaching and problem-solving conversations will help participants build their leadership skills, understand the politics surrounding their position, find solutions to complex challenges and increase their confidence and improve their ability to make an educational impact.

## Fiscal Services

NWRESD provides school districts with a full range of fiscal services, including accounting, budgeting, payroll processing, and financial reporting.

## Human Resources

Our human resources team supports districts with investigations and fact finding related to Title IX and other nondiscrimination-related complaints.

## Medicaid Reimbursements

We offer districts the opportunity to participate in school Medicaid Billing and Medicaid Administrative Claiming in Oregon. Medicaid reimburses schools for health and related services provided to Medicaid-enrolled students. Schools bill for services provided through an individualized family service plan (IFSP) or individualized education plan (IEP). The Medicaid administrative claiming (MAC) program reimburses districts for administrative activities associated with coordination, referral, outreach and program planning of Medicaid-covered health services.

## Spanish Language Interpretation and Translation

We offer translation (written) and virtual and in-person interpretation in Spanish to component districts.





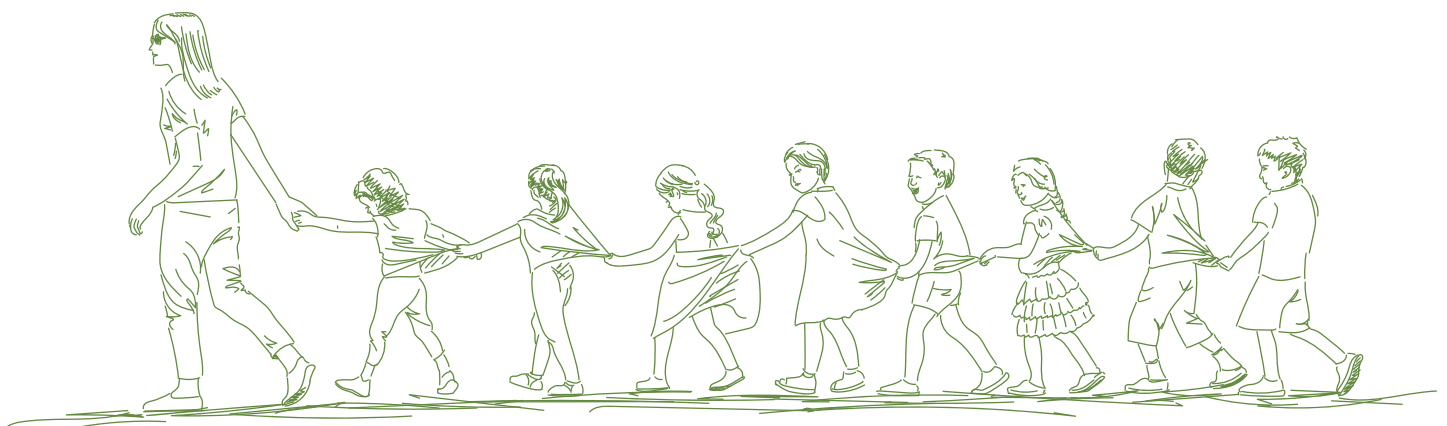
# Early Learning

## Early Intervention/Early Childhood Special Education (EI/ECSE) Evaluations

EI/ECSE evaluations look at a child's development and whether special education supports could build skills to further a child's individual developmental progress. Children who are found to be eligible for EI/ECSE receive free services.

## EI/ECSE Transportation

In collaboration with the child's resident district, the EI/ECSE program can provide transportation to evaluations.







# Instruction

## Attendance Services

We partner with district and school attendance teams to implement effective and meaningful attendance structures. The work we do grows community awareness about the importance of regular attendance and strengthens school-to-home connections. As a last resort, we also provide reconnection referrals by our attendance advisers. Our advisers take a restorative approach to their process, working with students and families to identify barriers to school attendance and strengthen relationships between families and schools.

## Career and College Readiness: Software and Coaching

Our team provides educators with professional learning communities, curriculum (e.g. Oregon Employability Skills), resources, summer externships, and grants. Student support includes career fairs, career kits, internships and experiential events such as Junior Achievement BizTown and Finance Park. We also provide districts with access to SchoolLinks, which is a web-based platform that helps districts track and centralize their career and college readiness efforts. The tool includes work-based learning and industry partner components. Optional features include social-emotional learning for elementary students, course planning and forecasting. Our team will support your district with implementation.

## Cascade Education Corps

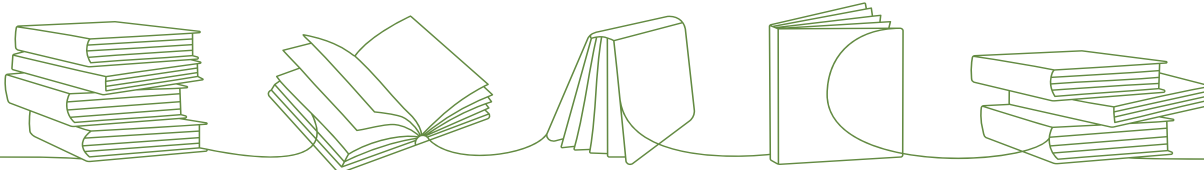
Cascade Education Corps is an experiential education program for Tigard-Tualatin School District students that aims to provide underserved youth with the knowledge, skills, resources and confidence to be lifelong environmental stewards. Students spend time in the field working on restoration projects.

## Grant Management

Our instructional services team provides grant writing services to school districts seeking competitive grants, including state, federal and private grants. Our grant writer partners with school district teams to envision, plan and convey projects and match them to grant opportunities.

## Junior Achievement: Biztown and Finance Park

Our career and college readiness team is partnering with Junior Achievement to open a new facility in 2023-24 in Hillsboro. Districts can participate in Biztown and/or Finance Park. Biztown provides fifth grade teachers with a civics curriculum and gives students the opportunity to run a pretend local town for a day. Finance Park provides high school teachers with a financial literacy curriculum and helps students understand budgeting based on a randomly assigned





lifestyle scenario. Educators receive digital and paper curriculum for 12 lessons, a field trip to the Junior Achievement facility in Hillsboro and one debrief lesson.

historically underserved students, including students of color and first-generation college goers.

## **Multi-tiered Systems of Support (MTSS) Technical Support & Data System Implementation**

We provide software and support for data-based screening and progress monitoring of system-wide intervention efforts, identifying individual student needs, and monitoring student progress.

## **Oregon Virtual Education (ORVED)**

Oregon Virtual Education (ORVED) offers a suite of online standards-based courses taught by Oregon-certified teachers.

## **Re-engagement Services**

We employ a team of attendance advisers to work with school districts on returning as many students as possible to the classroom. Acting on attendance referrals from schools, our team uses a restorative and culturally responsive approach when contacting parents. Along with providing resources and identifying the root cause of absenteeism, the adviser can also provide information on Oregon laws that require students to attend school. Our team's focus is first on re-engagement while still meeting Oregon attendance laws, as re-engagement has proven much more effective than truancy citations.

## **Willamette Promise**

In collaboration with local high schools and higher education institutions, students earn college credits while they are still in high school. We focus on cooperation between high school teachers and college faculty to ensure students are working and learning at a college level. We specifically seek to engage





# K-12 Special Education

## Audiology

Our audiology program supports students from birth to age 21. A licensed audiologist provides testing, consultation and workshops. Our two audiometric booths located at the Washington Service Center are used for audiological evaluations, including initial evaluations and re-evaluations to determine eligibility for deaf/hard of hearing special education services.

## Autism Spectrum Disorder (ASD) Services

Our ASD team supports students who experience autism spectrum disorder and the educators who work with them. Services include evaluations; licensed special education teachers with ASD expertise; and coaching and consultation for teachers, specialists, parents and instructional assistants.

## Behavioral Support Consultation

Evidence-based behavior support consultation targets a specific area of need and may include the development of a functional behavior assessment

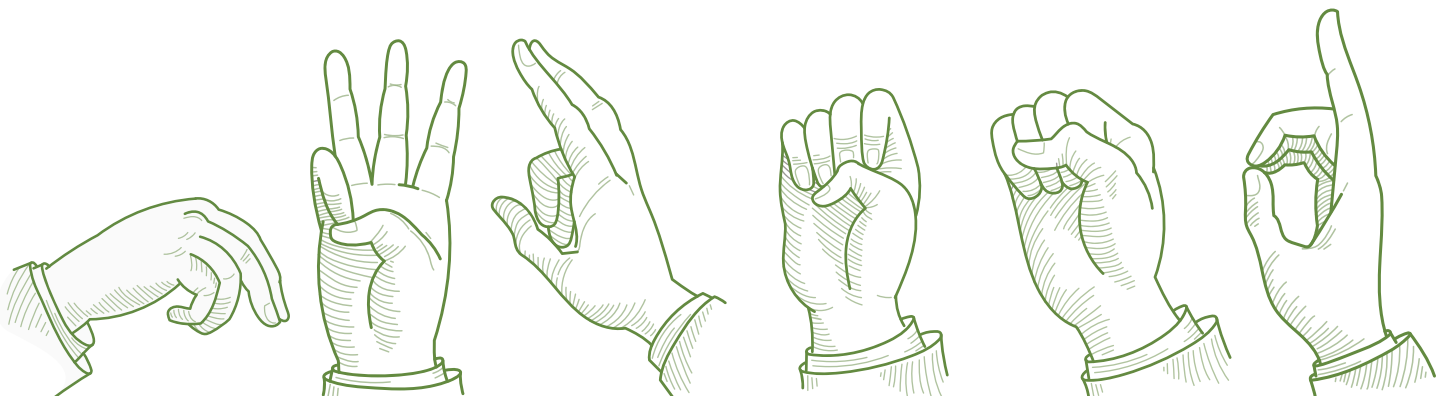
or behavior support plan, classroom and program support, coaching, data analysis, multi-tiered systems of support (MTSS) consultation, and other technical assistance.

## Blind Visually Impaired (BVI) Student Services

Our BVI team serves students birth to age 21 who experience low vision, are blind or are DeafBlind. Teachers of the visually impaired provide instruction, consultation, evaluation and professional development. Orientation and mobility specialists instruct students in safe, efficient and independent travel. Our brailist provides braille services to several school districts.

## Cascade Academy

Cascade Academy is an educational behavioral program located in Beaverton. It serves students in grades 9 through 12. Local district teams refer students when they need a small, supportive academic environment with a strong behavioral focus. A consulting school psychologist and district team work with a team of behavioral specialists and special





education teachers to meet students' academic, social, emotional and behavioral needs. Curriculum, instruction and assessment are linked to the Oregon State Standards and the IEP process. Students and staff participate in equity training designed to increase educational opportunities and prepare students for success in their home schools and communities.

### **Cascade/Pacific Intensive Classroom**

The Cascade/Pacific Intensive classroom functions as a self-contained program within Cascade and Pacific academies. The program serves students who need significant adult support to participate in an academic setting. Students have the potential to access grade-level instruction, but mental health or behavioral needs will have resulted in cumulative academic and social emotional skill deficits. Students may be far behind their peers and unable to participate in small group instruction, even at the appropriate skill-level. Targeted skills include participating in whole group instruction, maintaining emotional regulation for extended periods of time, and using appropriate communication skills in the school setting. Students typically need one-to-one support for much of the day.

### **Columbia K-8**

The Columbia Academy K-8 program is a special education placement for students who need intensive instruction regarding emotion regulation skills in order to access their academics. Students are placed into one of three classrooms based on grade level and programming needs. Currently, two classrooms serve elementary students. Program staff are trained to provide behavioral support, collaboration and unique supervision needed for students to learn safe strategies to regulate behavior and or emotions. Explicit instruction and practice of these skills helps ready students to return to their home school district. Students access core academic instruction at their appropriate grade level and receive specially designed instruction to work toward grade-level content standards. Students and staff participate in equity training to increase educational opportunities and

prepare students for success in their home schools and communities.

### **Deaf and Hard-of-Hearing Classrooms**

Our deaf and hard-of-hearing classrooms host kindergarten to sixth grade students. Learning alongside peers with similar communication modalities facilitates linguistic and social emotional development. Some children in the program use sign language as their primary mode of communication and others choose a more auditory path. Students communicate with their teacher through their primary modality and attend school with those who share their culture and communication system.

### **Deaf and Hard of Hearing Services**

This program is part of Oregon's Regional Inclusive Services. Itinerant teachers serve students who are eligible for special education or Section 504 services. Services include consultation to educators, professional learning, and instruction – which typically includes reading, written language, self-advocacy and other areas most impacted by hearing loss. The program also provides staffing services, including American Sign Language (ASL) interpreter services, ASL teacher, and ASL assistants who work under the direction of a licensed classroom teacher.

### **Educational/Instructional Assistants**

Instructional assistants assist teachers in all facets of daily classroom management, instruction and inclusion. Based on classroom needs, they will divide their time between working with students, providing behavioral support and completing assigned administrative tasks. As a type of paraeducator, they work under the direction of a teacher to help students learn, make progress on their IEP goals and contribute to a safe and productive school experience. As an integral part of the educational team, instructional assistants help teachers maximize instructional time.





## FM Rentals

We rent FM systems to districts for use with students who experience hearing loss and need technology to support access to their instructional program.

## Learning Specialists

Learning specialists hold an Oregon license with an endorsement in the area of their assignment. Instruction will include the development of academic, social, behavioral, and workforce skills. Additional job responsibilities include case management, IEP development, assessment and data collection, scheduling meetings, parent/guardian communication, management of support staff, and collaboration with general education teachers, youth transition program (YTP) teachers, social service and business partners. The teacher works with other instructional providers to ensure equitable access to teaching and learning.

## Levi Anderson Learning Center

Levi Anderson Learning Center, located at St. Mary's Home for Boys, is a day treatment program serving boys in grades 6-12. Curriculum, instruction and assessment are linked to the Oregon State Standards. Students receive mental health and behavioral supports individually and in small groups throughout the school day. Students and staff participate in equity training designed to increase educational opportunities and prepare students for success in their home schools and communities. The focus of the program builds on social emotional learning throughout the school day. Classroom staff are trained in trauma-informed care and collaborative problem solving and coordinate with the St. Mary's behavioral support team.

## Nursing Services

Our nursing team provides direct one-to-one care to students in the classroom, site-based nursing care or general nursing services in school districts.

Nurses also train and consult with educators. Districts can contract with us to provide nursing services to students based on a physician's order or as designated in the individual IFSP/IEP.

## Occupational Therapy (OT) Services

Our occupational therapy team assesses fine motor, visual motor, visual perceptual, motor coordination and sensory processing skills. Practitioners — occupational therapists and occupational therapy assistants — provide strategies and resources to promote independence, participation, strength, well-being and safety in the educational setting. They make adaptations to tasks and tools, model, consult, coach and teach skills. They may also facilitate assistive technology and equipment usage to remove barriers and support student success in academics, self-care and social participation.

## Pacific Academy

Pacific Academy is an educational program with mental health supports located in Beaverton. It serves students grades 6-12. Local district teams refer students when they need a small, supportive academic environment with a mental health focus. A consulting school psychologist and district team work with mental health staff and special education teachers to meet the student's academic, social, emotional and behavioral needs. Curriculum, instruction and assessment are linked to the Oregon State Standards and the IEP process. Students and staff participate in equity training designed to increase educational opportunities and prepare students for success in their home schools and communities.

## Physical Therapy (PT) Services

Our team provides school-age physical therapy services to address the gross motor needs of students in area school districts. Physical therapists evaluate the functional skills of students with disabilities to identify barriers to physically access and participate



in school. Physical therapists consult and collaborate with the student's educational team. Physical therapists and physical therapist assistants teach strategies to classroom staff that support safe access and participation for the student in all settings throughout each school day.

### **Regional Equipment Center**

The Regional Equipment center provides adaptive equipment and assistive technology devices to special education students experiencing orthopedic impairment, who are blind or visually impaired or deaf or hard of hearing. Equipment center staff consult with therapists to determine students' equipment needs.

### **School Psychology Services**

Our psychologists provide expertise in mental health, learning and behavior to schools and their students. They support evaluations for special education eligibility, Functional Behavioral Assessments (FBA), and school law and individualized education plan (IEP) procedures. They help improve academic achievement, promote positive behavioral and mental health, establish safe school climates and strengthen family partnerships.

### **Social Emotional Learning Schools**

We operate four specialized school programs for K-12 students with significant emotional and behavioral learning needs: Cascade Academy, Columbia Academy, Levi Anderson Learning Center and Pacific Academy. School districts or county mental health programs recommend student placements.

### **Speech-Language Pathology Services**

Our speech-language pathology team partners with school districts and educational teams to promote language literacy, social learning and engagement. Students receive culturally and linguistically sustaining services. Our SLPs support students who exhibit the

full range of communication needs, including language, literacy, articulation (speech sound disorders), fluency, voice/resonance and swallowing.

### **Youth Transition Program (YTP)**

YTP is a collaboration between school districts and the Office of Vocational Rehabilitation to prepare students with disabilities for employment or career-related postsecondary education or training through the provision of a comprehensive array of pre-employment transition services and supports. Clatsop County school districts match grant funds to sustain the work of two transition specialists funded with this grant.



# Technology

## Attendance Reconnection System

Developed by the Cascade Technology Alliance, this web-based application assists schools in processing and tracking attendance issues. The software provides recording and monitoring for all required forms. It incorporates the steps necessary for districts to return as many students as possible to the classroom and contributes significantly to case resolution rates and is available to school districts, ESDs, and police departments across Oregon.

## Canvas Learning Management System

We contract with Instructure to provide the Canvas Learning Management System (LMS). Canvas provides a full suite of learning management for distance learning and the classroom including a space for course content, quizzes and grades. Data and usage analytics are available.

## Criminal Background Check System

We contract with Criminal Information Services, Inc. (CRIS) to provide customized, easy-to-use, online and offline criminal background information at a reduced

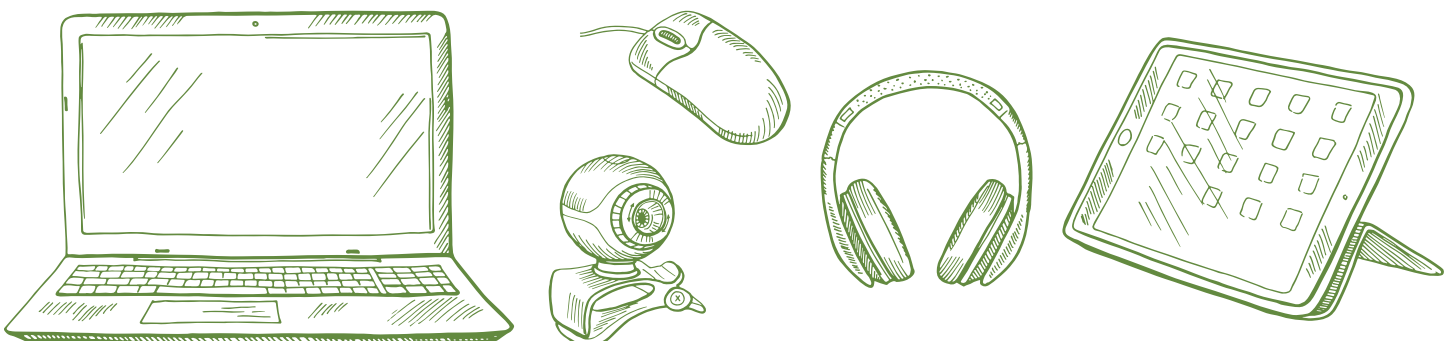
rate. With a per use charge, CRIS allows us to conduct background checks via web interface on volunteers, new hires, coaches, substitutes, teachers and staff. The CRIS database includes access to a nationwide database of over 1,000 registries and 300 million records on criminal activities.

## District Level Technology Purchasing

We provide purchasing assistance to component districts. Our team of trained technicians are available to purchase needed software and hardware from multiple retailers streamlining the process for clients.

## Help Desk

We provide dedicated staffing at the request of districts when they have specific support needs. Our direct site support, technology planning and purchasing, engineering, and remote help desk services are tailored to each district's needs.







## Learning360 Streaming Video

We contract with Infobase to provide Learn360, a Technology Services streaming digital content service for K–12 education. Teachers, students, and parents can access more than 130,000 multimedia resources on any internet-enabled device, anytime, anywhere. Does not include: Classroom Video on Demand.

## Oregon Data Suite

We contract with Willamette ESD to offer the Oregon Data Suite. The suite is a collection of data services that provide educators with an accessible tool to monitor and analyze key indicators of student success. It uses a visual dashboard to transform district, building, and student data into usable information.

## ORSpEd

ORSpEd is a custom built, web-based software application that serves Oregon K-12 special education needs. The system allows special education staff and administrators to access student data using a forms-based system with entry screens based on ODE forms. Reports can be configured using the data filtering tool and exported to excel for easy analysis.

## Public School Works

We contract with Works International to provide Public School Works compliance training to local school districts and public entities. Public School Works is designed to ensure all employees have completed annual training requirements. The widespread use allows districts to pay a nominal fee per employee each year. The software generates email notification to employees and uses a paperless management tracking feature.

## Restraint and Seclusion

The Restraint and Seclusion Application is a custom built records management system to track all

school incidents resulting in physical restraint and/or seclusion. The Oregon Department of Education requires a precise count and reporting of these incidents based on a number of student criteria. This application provides a secure and permanent history of these records, along with calculation and exportation of all pertinent data to ODE.

## School ERP Pro (formerly Infinite Visions)

We contract with Tyler Technologies to host School ERP Pro, a comprehensive enterprise financial and human resources management solution specifically engineered for the K-12 business environment. Modules include general ledger, budget, accounts receivable and accounts payable, payroll, human resources, grant tracking, and inventory. The employee access web portal allows employees, administrators, and fiscal staff access to work from anywhere. Direct support from Tyler Technologies is included.

## Synergy Student Information System

We offer the Synergy Student Information System (SIS), a comprehensive student information system providing single entry for student demographics, scheduling, attendance, grading, transcripts, fees, immunization, and discipline tracking. Additional Synergy applications and services are also supported, including integration with Zoom and One Roster, online registration, assessment, Inspect Item Bank, GradeCam, MTSS, analytics, SchoolPlay, special education, ParentVue and StudentVue.

## Technical Engineering Cooperative

We provide technology support and technology management services that support in-district technology support needs including desktop, server and technology administration. This service dedicates support hours and scope for support based on district needs.



From left: Lori Cohen, an instructional coaching expert, and Samya Matouk, NWRESD instructional coach, present about the importance of celebrating successes even when things seem hard at the year-end Instructional Coaching Network event. More than 70 instructional coaches gathered at NWRESD's Washington Service Center for a day of training and collaboration. *Photo by Tracey Goldner.*

# Student Success Act/Integrated Guidance Technical Assistance Plan

The Student Success Act plan, as required by HB 3427 Section 25, defines our role to support districts make progress toward the goals of the Student Success Act.



## 9th Grade Success Network

The purpose of the 9th Grade Success Network is to increase the number of students completing 9th grade on track to graduate high school within four years. On-track students are more than 3.5 times more likely to graduate from high school in four years. This network consists of more than 30 high school teams from across Clatsop, Columbia, Tillamook and Washington counties who engage in continuous improvement. Teams collectively focus on an aim statement, theory of improvement and change ideas. NWRESD's 9th Grade Success professional learning team serves as the network's hub, providing professional learning and capacity building to educators in service of student success.

## Attendance Collaboratives and Professional Learning

The Attendance Network, supported through the Every Day Matters and Integrated Guidance initiatives, provides ongoing professional learning around best practice in attendance, including development of attendance teams and re-engaging students and families who have been absent from school.

## Communications (Technical Assistance)

Our communications team offers technical assistance, networking and support to educational staff in the region who have a community relations role. We are available to assist with: Crisis response, Student Investment Account community relations plans, translation and interpretation, including training on how to work with an interpreter, graphic design, messaging, convening and networking around regionally relevant topics.

## Community Engagement and Family Partnerships (Technical Assistance)

Oregon districts feature communities, families and students who have been historically and

contemporarily underserved, underrepresented, excluded or marginalized from the educational system. When we support your district through training in strengthening family partnerships, advocacy, organizing, and increasing engagement with the community, you will see focal groups that will feel less like an audience for your decisions and more involved as key partners. Structures of accountability and feedback will bring a sense of transparency and authenticity to district planning. Specific services include access to community surveys and ThoughtExchange and training on how to facilitate story circles and empathy interviews.

## Early Literacy Network

Early literacy plays a key role in enabling the kind of early learning experiences that research shows are linked with academic achievement, higher graduation rates and enhanced productivity in adult life. Our early literacy supports are co-designed with the instructional leaders in the region and are rooted in research-based practices. Participants have access to professional development within three strands of content: science of reading, science of teaching and data-based decision making. Professional development is paired with in-district coaching opportunities from our team. During the 2023-24 school year, we are supporting LETRS certification (science of reading) for 40 educators and 50 administrators in the region. We are also supporting our districts with their Oregon Department of Education Early Literacy Success Grants and the subsequent goal setting and implementation. Our team believes that being a skilled reader is a civil right and our work is done through an equity lens. We are intentional and collaborative as we design and adjust our programs with and for our region's students, families and districts.

## Instructional Coaching Network

The Instructional Coaching Network is a professional learning community for educators who facilitate adult learning in their school or district. By supporting instructional coaches, the network helps districts





implement strategies across their system and develop their educator workforce in ways that lead to student growth. The regional approach connects coaches for job-alike collaboration and sharing of resources. Participants develop strategies to collaboratively plan with teachers, provide personalized feedback and use a continuous improvement model to establish and pursue student-focused goals.

### **Multi-tiered Systems of Support (MTSS) Technical Support & Data System Implementation (Technical Assistance)**

We provide software and support for data-based screening and progress monitoring of system-wide intervention efforts, identifying individual student needs, and monitoring student progress.

### **Research, Assessment and Evaluation (Technical Assistance)**

Our research, assessment and evaluation team furthers the ability of educators in our region to use data toward equitably improving outcomes for students by ensuring quality data, accessible data and training in data literacy. The team's current work focuses on supporting school districts with the data collection, reporting, and evaluation needs connected to their Student Success Act Plans and helping districts monitor the Academic Return On Investment (ARO) from these new state funds.

### **School Culture and Climate**

Our school culture and climate team supports districts with school culture and climate goals through a multi-tiered systems of support (MTSS) lens. We help districts strengthen their instruction holistically (e.g., positive behavioral interventions and supports (PBIS), MTSS, school culture and climate) and/or focus on improving certain components (e.g., addressing student behaviors, fostering a welcoming and inclusive environment). The team has experience in mental,

social, and behavioral health; PBIS and MTSS systems; classroom social-emotional learning instruction; and safety and prevention. We take a user-centered approach to helping schools and districts meet their goals, which means we customize our services based on what the school or district needs.

### **Small/Rural Grant Support (Technical Assistance)**

Our instructional services team provides grant writing services to small and rural school districts in order to fulfill the requirements of Integrated Guidance.





# Appendix



Northwest Regional Outdoor Science School Program Leader “Astro” takes a group of students on a hike to Barview Jetty to learn how the jetty affects the ecosystem at Camp Magruder. NWRES D’s outdoor school program provides fifth and sixth graders the opportunity to learn in the great outdoors for four days and three nights. Students immerse themselves in hands-on lessons with their peers, our educators, student leaders and educators from their schools. More than 10,000 students participated in 2022. *Photo by Peter O-Brien-Dunn.*



# Resolution Authorizing NWRESD Local Service Plan for 2024-25

BE IT RESOLVED by the Board of Directors of \_\_\_\_\_ School District in \_\_\_\_\_ County, Oregon, that for the nature and extent of Core Services, Service Credits, and the Student Success Act technical assistance plan described in the proposed local service plan and in compliance with the provisions of ORS 334.175, the school board of said school district hereby approves the Northwest Regional Education Service District Local Service Plan for the 2024-25 school year.

ADOPTED this \_\_\_\_\_ day of \_\_\_\_\_ 2024.

ATTEST:

\_\_\_\_\_  
Board Chair

\_\_\_\_\_  
Superintendent

**Please email or mail the signed document by March 1, 2024 to:**

Valerie White

[vwhite@nwresd.k12.or.us](mailto:vwhite@nwresd.k12.or.us)

Northwest Regional Education Service District

5825 NE Ray Circle

Hillsboro, Oregon, 97124





A preschooler enjoys playground time at Tillamook Head Start. NWRESD's Early Learning Hub helps connect hundreds of families in Clatsop, Columbia and Tillamook counties to free preschool options in their communities. *Photo by Justin Grafton Studios.*

# Grant Funded & Value-Add Services

Through support from federal, state and private grants, NWRESD provides certain services at no cost to school districts.



## Attendance Services

We partner with district and school attendance teams to implement effective and meaningful attendance structures. The work we do grows community awareness about the importance of regular attendance and strengthens school-to-home connections. As a last resort, we also provide reconnection referrals by our attendance advisers. Our advisers take a restorative approach to their process, working with students and families to identify barriers to school attendance and strengthen relationships between families and schools.

## Augmentative and Alternative Communication and Assistive Technology

This team is composed of specialists in assistive technology and augmentative communication. Assistive technology encompasses technological supports and augmentative communication systems. We provide training, information, technical assistance and resources regarding the uses of technology for children with disabilities.

## Blind Visually Impaired (BVI) Student Services

Our BVI team serves students birth to age 21 who experience low vision, are blind or are deafblind. Teachers of the visually impaired (TVI) provide instruction, consultation, evaluation and professional development. Orientation and mobility (O&M) specialists instruct students in safe, efficient and independent travel. Our brailist provides braille services to several school districts.

## Blind Visually Impaired Student Fund

This fund was established in 2009 by the Oregon State Legislature to help students transition to educational programs in their neighborhood schools when Oregon's School for the Blind closed. The fund's purpose has since expanded to enhance learning for

all students in the state who experience blindness or visual impairment.

## Cascade Alliance for Equity (CAFE)

CAFE is a collaboration with school districts in Washington, Columbia, Clatsop and Tillamook counties. The mission of the group is to learn from students so that we can improve the collective work of educators and community partners across the region. When the work is successful, educators will use culturally sustaining practices in the classroom so that all students have equitable opportunities and improved outcomes.

## Child Care Resource and Referral (CCR&R)

Northwest CCR&R supports child care providers in Clatsop, Columbia and Tillamook counties through training, career advancement opportunities, licensing and other forms of support. The team also advances child care sector planning for the region.

## Courier

NWRESD's courier delivers educational materials, technology and other materials between all school districts and NWRESD sites. [The courier schedule is posted to nwresd.org.](https://www.nwresd.org/courier-schedule)

## Deaf and Hard-of-Hearing Services

This program is part of Oregon's Regional Inclusive Services. Itinerant teachers serve students who are eligible for special education or Section 504 services. Services include consultation to educators, professional learning, and instruction – which typically includes reading, written language, self-advocacy and other areas most impacted by hearing loss. The program also provides staffing services, including American Sign Language (ASL) interpreter services, ASL teachers, and ASL assistants who work under the direction of a licensed classroom teacher.



## Diverse Educator Pathways

Research shows academic and social emotional benefits for students who have access to educators who mirror their racial, cultural and linguistic identities. Yet, there is a severe shortage of linguistically and racially diverse educator talent in our state. To address this critical gap, the Diverse Educator Pathways Program partners with school districts to develop diverse talent pools, recruit future teachers and specialists and convene teacher candidates in a networked community. Participating prospective educators agree to interview with their home district upon completion of their licensure program.

## Early Childhood Special Education (ECSE)

Early Childhood Special Education (ECSE) offers special education services to children found eligible through our screening and evaluations process. Services include specially designed instruction and related services such as physical, occupational, or speech and language therapy. Most of these services are offered in partnership with school districts, community and Head Start preschools, and other child care facilities. When needed, services are offered in specialized settings.

## Early Intervention

Our Early Intervention (EI) program supports eligible children from birth to age 3 years. The program helps families develop the skills they need to help their children learn and grow. Services are delivered through a parent coaching model at home or in other care-giving settings.

## Early Intervention/Early Childhood Special Education (EI/ECSE) Intake and Screening

Screenings are completed at no cost for children from birth to age five. The EI/ECSE intake and screening process determines if a child needs to be evaluated

to determine EI/ECSE eligibility. Evaluations, which are available as a contracted service, look at a child's development and whether special education supports could build skills to further a child's individual developmental progress.

## Early Learning Hub

The Northwest Early Learning Hub convenes cross-sector partners – educators, health care providers, community advocates, businesses and others – to create local systems that are aligned, coordinated and family-centered. Families in Clatsop, Columbia and Tillamook counties receive support to become healthy, stable and attached and their children receive the early learning experiences they need to thrive.

## English Language Learner Consortium (Title III)

This consortium ensures English learners, including immigrant children and youth, attain English proficiency and achieve academically in English and all other subjects. We assist teachers, including preschool teachers, principals and other school leaders in establishing and sustaining effective language education programs so that students are ready to attend classes in English.

## Grow Your Own

Our Grow Your Own program helps provide opportunities for students, paraeducators and community members who are interested in working in education, and others to pursue a teaching degree. The education workforce in Oregon is predominantly white and monolingual, but Oregon's students are culturally, linguistically and racially diverse. Our goal is to have a teaching workforce that reflects the diversity of our communities. Our team partners with local community colleges and universities to create opportunities for more people to become educators. We take a responsive approach to this program and will adjust it as the needs of our communities change.





## Instructional Technology Professional Learning

NWRESA's technology team hosts workshops and training opportunities for educators who want to learn more about educational technology tools. Opportunities are posted to nwresd.org on the technology page.

## Migrant Education Program (MEP)

MEP ensures children whose families migrate for work in the agricultural, fishing, timber and other similar industries can fully benefit from public education. The program focuses on family partnership, kindergarten preparation, student empowerment and high school completion.

## Northwest Regional Outdoor Science School

Northwest Regional Outdoor Science School is a four-day, three-night experience for sixth grade students. In an immersive experience, students learn about the natural world at one of our five sites in northwest Oregon. Each site's 12 to 13 staff members are supported by high school volunteers.

## Northwest Parenting

Northwest Parenting is a regional collaborative that delivers parenting education programs, educational workshops, family engagement opportunities and support for school success to families in Clatsop, Columbia and Tillamook counties.

## Northwest Regional Educator Network

The Northwest Regional Educator Network (REN) is one of 10 networks across Oregon tasked with determining how to use local grant funds to best ensure students have access to high-quality educators. The Northwest REN encompasses Columbia, Clatsop, Tillamook and Washington counties.

## Nursing Services

Our nursing team provides staff and expertise. Services include direct one-to-one care to students in the classroom, site-based nursing care or general nursing services in school districts. Nurses also train and consult with educators. Districts can contract with NWRESA to provide nursing services to students based on a physician's order and/or as designated in the individual IFSP/IEP.

## Oregon Response to Instruction & Intervention (ORTIi)

The purpose of Oregon Response to Instruction and Intervention is to provide technical assistance to Oregon school districts implementing Response to Intervention (RTI) systems that provide targeted, effective instruction to meet the needs of all students and provide the framework to identify students with Specific Learning Disabilities (SLD). The focus of the project is on literacy, early intervention, and the use of evidence-based practices. ORTIi has been supported by the Oregon Department of Education since 2006.

## Regional Equipment Center

The Regional Equipment center provides adaptive equipment and assistive technology devices to special education students experiencing orthopedic impairment, who are blind or visually impaired or deaf or hard of hearing. Equipment center staff consult with therapists to determine students' equipment needs.

## Regional Inclusive Services

Oregon's 11,000+ students who experience visual impairment, orthopedic impairment, deafness or hard of hearing, deaf-blindness, traumatic brain injury and/or autism spectrum disorder need an appropriate and accessible education in their home district. Regional Inclusive Services provides training, technical tools, and additional support to educators so that all schools, no matter their size or location, can deliver an inclusive education. Regional Inclusive



Services recently changed its name from Regional Programs to more specifically and accurately describe its function. Inclusive practices ensure that students with disabilities have opportunities to learn alongside their nondisabled peers in their neighborhood schools and communities. The statewide program consists of the Oregon Department of Education and several education service districts, school districts and other community agencies that work in partnership to ensure educators and schools across Oregon are equipped with the tools, skills and resources to deliver an accessible education for all children.

### **School Safety and Prevention System**

The School Safety and Prevention System was established through Section 36 of the Student Success Act and Senate Bill 52 (Adi's Act). This new statewide system provides an integrative approach for aligning school safety, public education and health systems that is centered in equity, racial equity and access to mental health services. The program provides technical expertise, consultation, training and system development in responding to threats of violence, sexual incidents, suicidal ideation, bias incidents, and tragedies in the school community. The program's multi-tiered system of support also includes universal prevention programs aimed at promoting mental health and belonging in schools and preventing bullying, harassment and intimidation.

### **Small/Rural District Grant Support**

The Small/Rural Grant Support program offers support for noncompetitive Oregon Department of Education grants and includes grant writing, application and reporting activities. Qualifying districts are those with less than 2,000 ADMw. This enrollment cap does not apply to other grant support requests such as competitive and one-time grants from other funders.

### **STEM (Science, Technology, Engineering, Math) Hub**

The Northwest STEM Hub serves 15 school districts and their surrounding communities throughout Clatsop, Columbia, Tillamook and rural Washington counties. The team empowers students by removing barriers to STEM education by offering integrated learning experiences for students and families, providing professional development and resources to rural teachers, and partnering with local industry, community organizations, and post-secondary institutions to promote career-connected learning opportunities.

### **Traumatic Brain Injury (TBI) Services**

Our TBI liaison connects educators, families and students to resources both within our region and throughout the state. The TBI liaison also works closely with members of the statewide TBI team, which includes professionals throughout our region who have volunteered to complete professional learning activities needed to provide consultation within their school district.

### **Youth Transition Program (YTP)**

YTP is a collaboration between school districts and the Office of Vocational Rehabilitation to prepare students with disabilities for employment or career-related postsecondary education or training through the provision of a comprehensive array of pre-employment transition services and supports. Clatsop County school districts match grant funds to sustain the work of two transition specialists funded with this grant.

2024-25 Estimates

# Core Services

These estimates are based on a \$10.2 billion State School Fund. Estimates for Beaverton and Hillsboro are based on a 4% rollup.

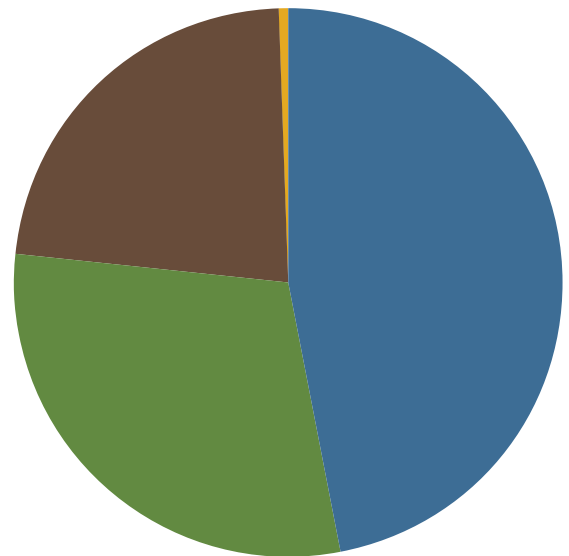
**Core Services:** \$5,425,601

- Technology: \$3,083,724
- County Allocations: \$2,264,461
- Instruction: \$1,482,859
- Miscellaneous: \$27,634

**Beaverton and Hillsboro School Districts:**

- Regional Innovations: \$920,765
- Professional Development: \$512,312

**Total Core Services:** \$6,858,678



# County Allocations



Clatsop County

\$379,323



Columbia County

\$457,273



Tillamook County

\$314,562



Washington County

\$1,113,302



2024-25 Estimates

# Service Credits

These estimates are based on a \$10.2 billion State School Fund.



## Clatsop County

**Total - \$2,125,801**

Astoria - \$726,666

Jewell - \$96,998

Knappa - \$228,705

Seaside - \$649,509

Warrenton Hammond - \$423,923



## Columbia County

**Total - \$2,936,799**

Clatskanie - \$320,309

Rainier - \$340,020

Scappoose - \$890,769

St. Helens - \$1,115,156

Vernonia - \$270,545



## Tillamook County

**Total - \$1,452,019**

Neah-Kah-Nie - \$325,053

Nestucca Valley - \$258,769

Tillamook - \$868,197



## Washington County

**Total - \$9,762,184**

Banks - \$450,182

Forest Grove - \$2,471,104

Gaston - \$227,849

Sherwood - \$1,909,727

Tigard-Tualatin - \$4,703,322

## Total

\$16,276,803





# Financial Summary Information

## Service Credit Allocations

	ADMw 2023 Estimate	ADMw(e) 6/26/23 ODE estimate	ADM % to total	ADM % to total for service and core credits	2024-25 at \$10.2 B	2023-24 LSP allocations	2024-25 variance to 2023-24 LSP allocations
--	--------------------	------------------------------	----------------	---	---------------------	-------------------------	---

### Clatsop County School Districts

Astoria	2,072.02	2,115.39	1.81%	4.46%	\$702,175	\$652,056	\$50,119
Jewell	294.05	282.37	0.24%	0.60%	\$93,729	\$92,536	\$1,193
Knappa	634.93	665.78	0.57%	1.41%	\$220,997	\$199,810	\$21,187
Seaside	1,897.93	1,890.78	1.62%	3.99%	\$627,619	\$597,270	\$30,349
Warrenton-Hammond	1,230.89	1,234.08	1.06%	2.60%	\$409,636	\$387,356	\$22,280

### Columbia County School Districts

Clatskanie	956.46	932.45	0.80%	1.97%	\$309,514	\$300,994	\$8,520
Rainier	1,064.59	989.83	0.85%	2.09%	\$328,561	\$335,022	\$6,461
Scappoose	2,538.68	2,593.11	2.22%	5.47%	\$860,747	\$798,911	\$61,836
St. Helens	3,242.72	3,246.32	2.78%	6.85%	\$1,077,572	\$1,020,470	\$57,102
Vernonia	780.22	787.58	0.67%	1.66%	\$261,426	\$245,532	\$15,894

### Tillamook County School Districts

Neah-Kah-Nie	919.54	946.26	0.81%	2.00%	\$314,098	\$289,375	\$24,723
Nestucca Valley	712.38	753.30	0.65%	1.59%	\$250,048	\$224,183	\$25,865
Tillamook	2,547.71	2,527.40	2.17%	5.33%	\$838,936	\$801,753	\$37,183

### Washington County School Districts

Banks	1,185.90	1,310.52	1.12%	2.77%	\$435,009	\$373,198	\$61,811
Beaverton		45,967.69	39.38%				
Forest Grove	7,220.61	7,193.61	6.16%	15.18%	\$2,387,821	\$2,272,294	\$115,527
Gaston	665.74	663.29	0.57%	1.40%	\$220,170	\$209,505	\$10,665
Hillsboro		23,374.35	20.03%				
Sherwood	5,540.12	5,559.39	4.76%	11.73%	\$1,845,364	\$1,743,452	\$101,912
Tigard-Tualatin	13,976.92	13,691.80	11.73%	28.90%	\$4,544,806	\$4,398,476	\$146,330