

Annual Report & Local Service Plan

A report to school boards and community about the services provided to school districts in the 2020-21 school year and planned services for the 2022-2023 school year





TABLE OF CONTENTS

- ABOUT3**
- Board of Directors.....4
- Executive Leadership.....5
- Organizational Chart.....6
- ANNUAL REPORT.....7**
- Reflecting on the 2020-21 School Year8
- Our Service Area12
- Regional Demographics13
- Overview of 2020-21 Financials.....14
- District Profile: Astoria..... 15
- District Profile: Banks..... 17
- District Profile: Beaverton..... 19
- District Profile: Clatskanie 21
- District Profile: Forest Grove 23
- District Profile: Gaston..... 25
- District Profile: Hillsboro..... 27
- District Profile: Jewell 29
- District Profile: Knappa 31
- District Profile: Neah-Kah-Nie..... 33
- District Profile: Nestucca Valley 35
- District Profile: Rainier 37
- District Profile: Scappoose 39
- District Profile: Seaside..... 41
- District Profile: Sherwood 43
- District Profile: St. Helens..... 45
- District Profile: Tigard-Tualatin..... 47
- District Profile: Tillamook 49
- District Profile: Vernonia..... 51
- District Profile: Warrenton-Hammond..... 53
- LOCAL SERVICE PLAN55**
- About the Local Service Plan56
- Local Service Plan - Core.....57
- Local Service Plan - Menu59
- Student Success Act (SSA) Plan.....69



ABOUT



NORTHWEST REGIONAL EDUCATION SERVICE DISTRICT

BOARD OF DIRECTORS

NWRESD is governed by a nine-member board. Five zoned members are elected by school boards from the represented zone. Four members are appointed by the elected members. Appointed positions include representation from the social services, higher education and business sectors. There is also an at-large position.



TONY ERICKSON, CHAIR

Zone 4: Beaverton (Beaverton and Sunset High School attendance areas), Clatskanie, Rainier, Scappoose, St. Helens and Vernonia



ROSS TOMLIN, VICE CHAIR

Higher Education



CHRISTINE RILEY

Zone 1: Gaston, Sherwood and Tigard-Tualatin



DOUG DOUGHERTY

Zone 2: Astoria, Banks, Forest Grove, Jewell, Knappa, Neah-Kah-Nie, Nestucca Valley, Seaside, Tillamook and Warrenton-Hammond



LISA POEHLITZ

Zone 3: Hillsboro



KAREN CUNNINGHAM

Zone 5: Beaverton (Aloha, Southridge and Westview attendance areas)



MAUREEN WOLF

At-Large



ERNEST STEPHENS

Business



DIANE WILKINSON

Social Services

EXECUTIVE LEADERSHIP



DAN GOLDMAN
Superintendent



SARAH POPE
Deputy Superintendent



JOHNNA TIMMES
Executive Director of Early Learning



CATHLEEN JENSEN
Executive Director of
K-12 Special Education



MEGAN MCCARTER
Executive Director of
Instructional Services



SHARIF ZAKIR LIWARU
Director of Equity and
Family Partnerships



DEBBIE SIMONS
Chief Human Resources Officer



STUART LONG
Chief Information Officer

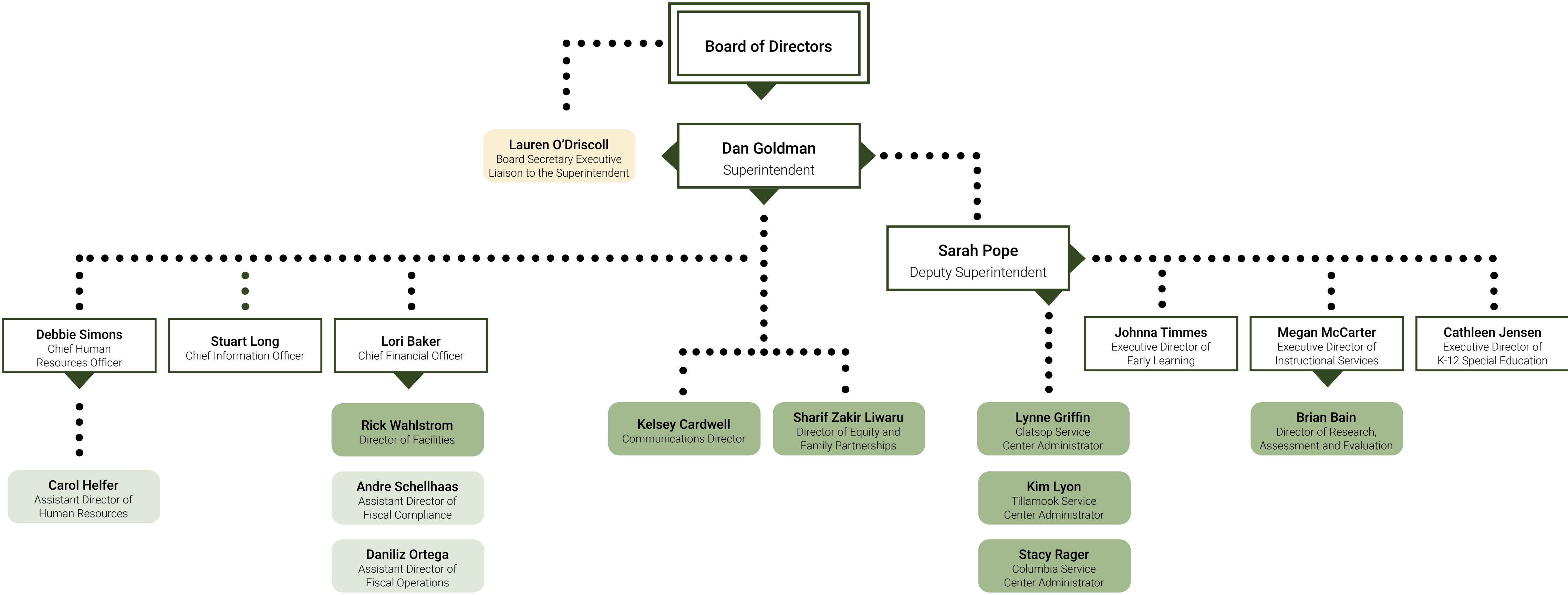


LORI BAKER
Chief Financial Officer



KELSEY CARDWELL
Director of Communications

ORGANIZATIONAL CHART





ANNUAL REPORT

2020-21 FISCAL YEAR

REFLECTING ON THE 2020-21 SCHOOL YEAR

A Message from Superintendent Dan Goldman



To the school boards, staff, community partners, students and families that we have the privilege of working with:

This past school year has undoubtedly challenged educators beyond what we could have ever imagined when we first set out to inspire and support students. As your partner

and a regional convener of public agencies and child and family services, Northwest Regional Education Service District (NWRES D) was uniquely positioned to witness the untold, and often heroic, efforts of educators across northwest Oregon. Reflecting on 2020-21, I am deeply, deeply grateful to my fellow superintendents and countless other school leaders throughout our region who have worked tirelessly, selflessly and with genuine care for the well-being of the children and

families they've committed to serving. There is ample evidence that—despite the difficulties navigating the pandemic, a national social justice awakening, and increased politicization of schooling—our region's teachers, support staff and specialists have kept students' needs at the forefront of their efforts. Shoulder-to-shoulder, our teams routinely persisted to improve the lives of the students and families we serve. I'm proud and honored to deliver a report highlighting what we were able to accomplish together.

In the enclosed pages, you will find celebrations and snapshots from the 2020-21 school year. As one of the most geographically, racially and economically diverse education service districts in Oregon, serving the largest student population, our work can be complex and is frequently intertwined with many different partners. Each year, we struggle to neatly summarize our work at a high level so the information enclosed in the annual report is meaningful to our partners and stakeholders. Between my summary of our work and the

individual school district sections that follow, I hope you get an authentic and accurate picture of how NWRES D is working for you, the varied programs and activities we employ with our partners to improve student outcomes, and our commitment to improving educational access, equity and success for every child in our territory.

2020-2025 Strategic Plan Progress

The 2020-21 school year was the first year in our current strategic plan. When we drafted the plan, we had not forecasted a crippling global pandemic, nor did we anticipate the opportunities that would arise from historic levels of social unrest and uprising across the country and at home. Through an incredible number of curveballs, detours and delays, I am proud to share substantive progress.

Our strategic plan is organized as a set of six collective commitments. We know that only when all of our staff work collaboratively to pursue these six collective commitments, will

we achieve our organizational vision: “Every student educated, equipped and inspired to achieve their full potential and enrich their communities.”

To highlight how our collective work impacts students, we recently enlisted the Lopez family to tell their story and share more about what educator success looks like from their perspective. The Lopez’s connection to our services are extensive and include:

- The entire family received services from the Migrant Education Program.
- Alejandra (eldest daughter) was a member of our 9th Grade Success Student Network, a network of students from school districts across the region who work together to identify and pilot opportunities for improving the rate of success for 9th grade students.
- Leti (mom) attended our adult technology courses to learn how to support her children through comprehensive distance learning.
- Rosalinda (youngest daughter) interned with the Migrant Education Program, providing leadership to younger students with a similar life experience.

At a personal level, the Lopez family’s story embodies what is possible when educators work together toward a common vision.

We hope you enjoy meeting them by watching the short clip below:



Alejandra Lopez, a 17-year-old from the rural Oregon coast, shares her experience as the child of immigrants. “The Migrant Education Program has been absolutely essential for me and my family,” she says. Watch the video at nwresd.org/migrantspirit.

Zooming out to a higher level, I’ve also enclosed some of the milestones we achieved last year within each of the collective commitments.

Collective Commitment 1: Cultivate antiracism, multiculturalism, and diverse racial perspectives in program design, continuous improvement, and decision-making.

- Launched the Board Equity Policy Advisory Committee to ensure our policies increase, rather than limit, access and outcomes for each NWRESD student.
- Grew the Diverse Educator Pathways program to 116 participants, an increase of more than 300%. This program provides mentorship and support to aspiring multilingual, multicultural educators.
- Created an anti-bias training module for those participating on job interview panels; added an exit interview process to identify staff retention strategies and opportunities.
- NWRESD leaders completed a six-part workshop series with the National Equity Project to pave the way for the creation of region-wide Equity Learning Teams (ELTs).

- Published the NWRESA Antiracist Multicultural Continuum and had NWRESA staff measure where they feel our organization lives along the continuum to help us set measurable equity goals.

Collective Commitment 2: Create culturally sustaining learning environments that ensure each student is safe, known, and connected.

- The speech language pathology, autism spectrum disorder and school psychology teams administered over 1,400 virtual sub-tests to diagnose students' needs while in comprehensive distance learning.
- Schools teams attended the Northwest Positive Behavior and Intervention Supports conference to systematically strengthen PBIS structures in the coming school year.
- Students at Columbia Academy received 80 minutes of Lions Quest Social Emotional Learning Curriculum each week (the remaining schools will select curriculum this school year).
- We provided more than 250 wireless devices to staff and families without internet access and 364 EI/ECSE families with iPads to

ensure continuation of services during the pandemic.

Collective Commitment 3: Establish high expectations for the achievement and personal growth of each student.

- 20 high schools serving over 5,800 students adopted more equitable and motivating grading policies to support student success during the pandemic.
- 35 students across our four counties completed local change projects to improve their schools through the 9th Grade Success Network.
- 92% of participants said 9th Grade Success Network professional development will lead to improved outcomes for historically underserved students.
- We increased the use of data-driven decision-making software (supporting MTSS) from 20% of districts to 55%.

Collective Commitment 4: Utilize culturally sustaining, research-based practices for designing and delivering instruction.



Stephen Ferbrache, a student at Columbia Academy, sits atop a play structure during recess on March 31, 2021. Photo by Kelsey Cardwell.

- Teacher teams worked collaboratively in weekly Professional Learning Communities to refine their practice and support students in the areas of math, language arts, social emotional learning and equity.
- Members of the instructional services team developed three popular Every Student Belongs curriculum modules with facilitator guides to assist teachers, principals and students to create safe and welcoming classroom spaces.

Collective Commitment 5: Develop authentic, reciprocal, and inclusive partnerships with our diverse students, families, and community partners.

- We piloted a continuous improvement planning process to connect department-level actions to the agency strategic plan, including data monitoring, evaluation and professional learning requirements.
- We launched new accessible, user-



Robbie, an elementary student at Day Treatment Program, focuses on matching cards with a Life-Works milieu counselor. Photo by Kelsey Cardwell.

centered, multilingual communications tools including a new website and email/SMS bulletin system. We trained more than 30 program team members to use the tools for communicating with families and partners.

Collective Commitment 6: Seek, organize, and allocate resources toward achieving these commitments

- We created a new annual report and annual budget document to demonstrate alignment of resources to agency values and the new strategic plan.
- We increased our general fund reserve to 9.3% from 8%.

Detours: COVID-19 Response

- In partnership with metro region education service districts and health care providers, NWRESD coordinated a COVID-19 vaccination site at the Oregon Convention Center. As a result of the partnership, more than 70,000 educators efficiently received their vaccines. Our staff also recruited and coordinated more than 165 volunteers from Washington County to work at the vaccination site.

- In response to distance learning and the pandemic, we hosted a weekly professional learning series and conducted individual coaching sessions for staff from 11 of our component districts. Topics included: educational technology, the Canvas learning management system, culturally responsive teaching in a virtual setting, and social emotional learning in the pandemic context.
- We posted weekly COVID-19 metrics to help component school districts plan for a return to face-to-face instruction.
- We coordinated regular and ongoing meetings between county public health offices and our component school districts.

My best-

Dan Goldman
Superintendent

OUR SERVICE AREA

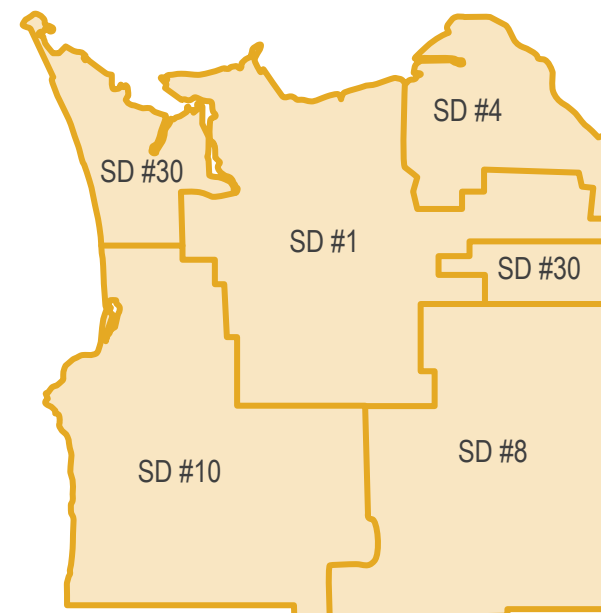
Land Acknowledgement:

Every community owes its existence to those who took part in making the history that led us to where we are today.

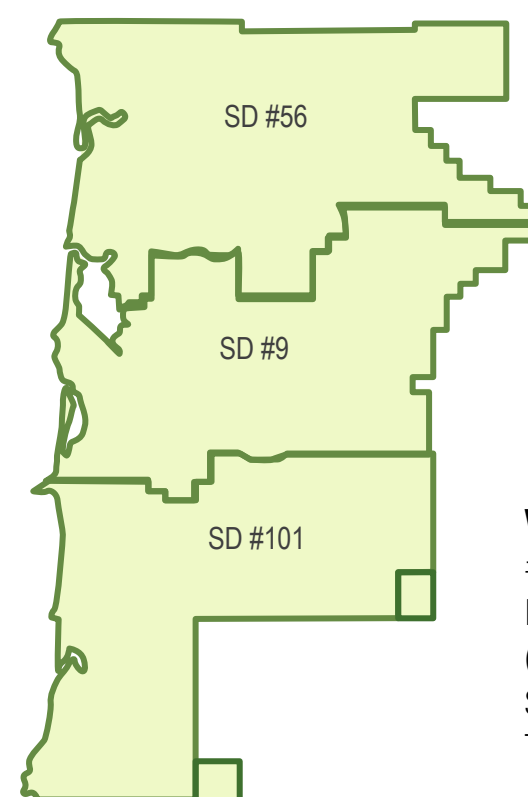
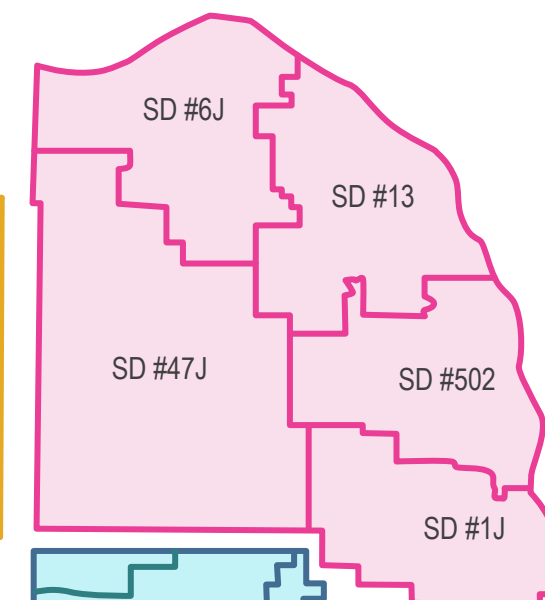
Some were brought to this region against their will, some were drawn to leave distant homes in pursuit of a better life, and some have lived here for countless generations.

We acknowledge that our service area overlays the traditional lands of the Atfalati, Nekelim, Siletz and Tillamook peoples. In our daily work in service to this region, we aspire to honor with gratitude the land itself and the people who have stewarded it over the centuries.

Clatsop County: Astoria (SD #1), Jewell (SD #8), Knappa (SD #4), Seaside (SD #10), Warrenton-Hammond (SD #30)

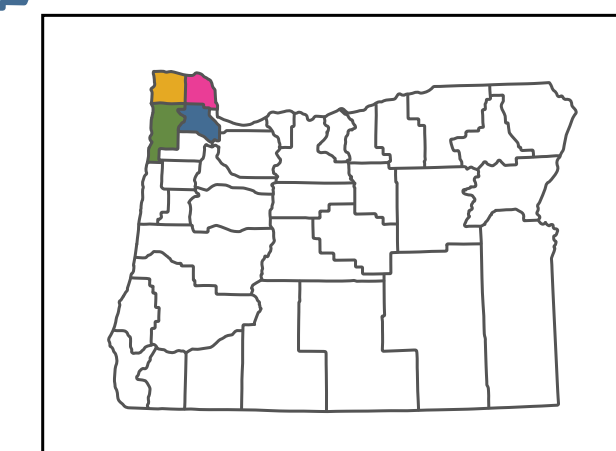
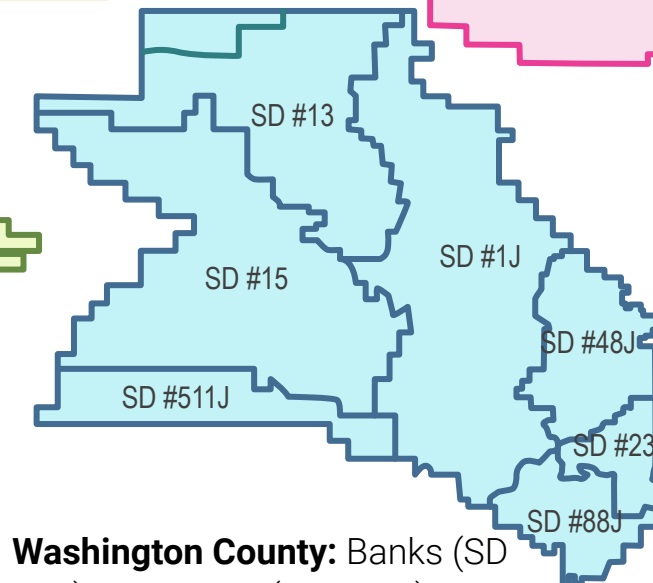


Columbia County: Clatskanie (SD #6J), Rainier (SD #13), Scappoose (SD #1J), St. Helens (SD #502), Vernonia (SD #47J)



Tillamook County: Neah-Kah-Nie (SD #56), Nestucca Valley (SD #101J), Tillamook (SD #9)

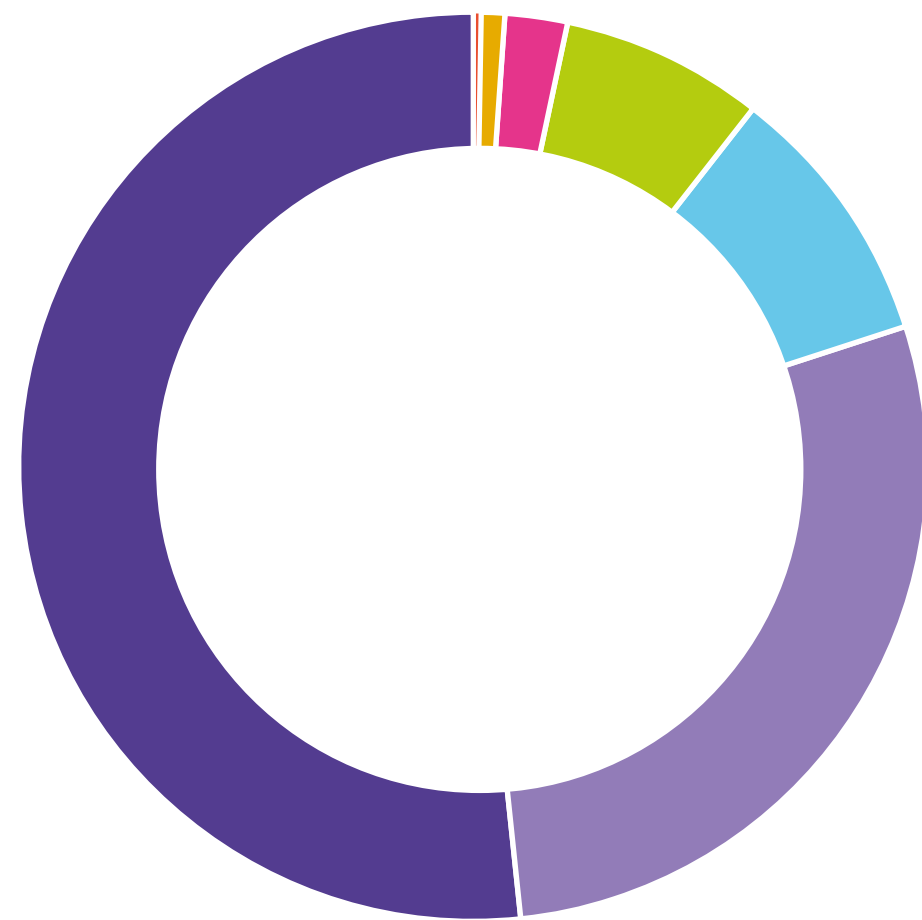
Washington County: Banks (SD #13), Beaverton (SD #48J), Forest Grove (SD #15), Gaston (SD #511J), Hillsboro (SD #1J), Sherwood (SD #88J), Tigard-Tualatin (SD #23J)



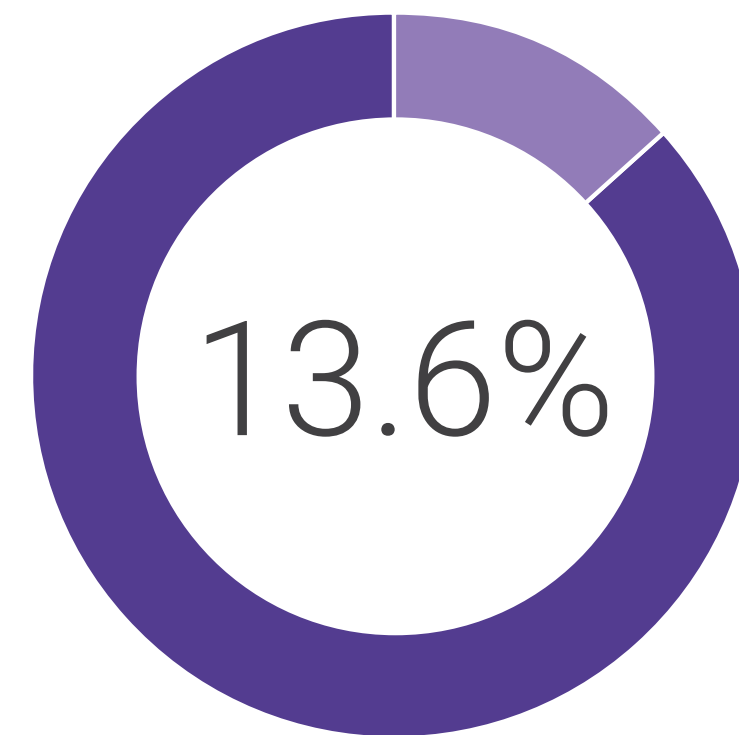
REGIONAL DEMOGRAPHICS

STUDENT RACIAL DEMOGRAPHICS

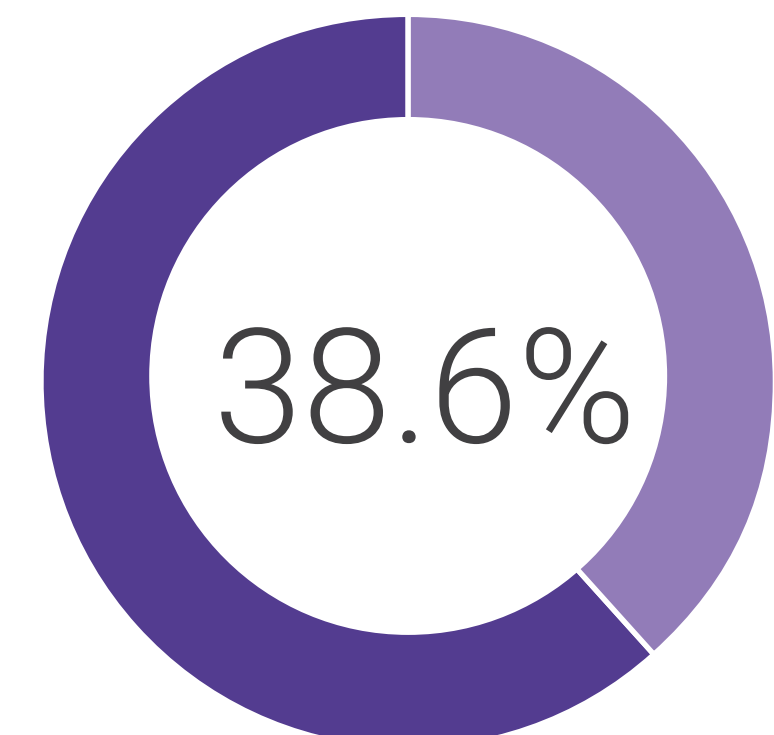
- Indigenous - .55%
- Pacific Islander - .83%
- Black - 2.1%
- Multiracial - 7.1%
- Asian - 9.4%
- Latino/a/x - 28.4%
- White - 51.6%



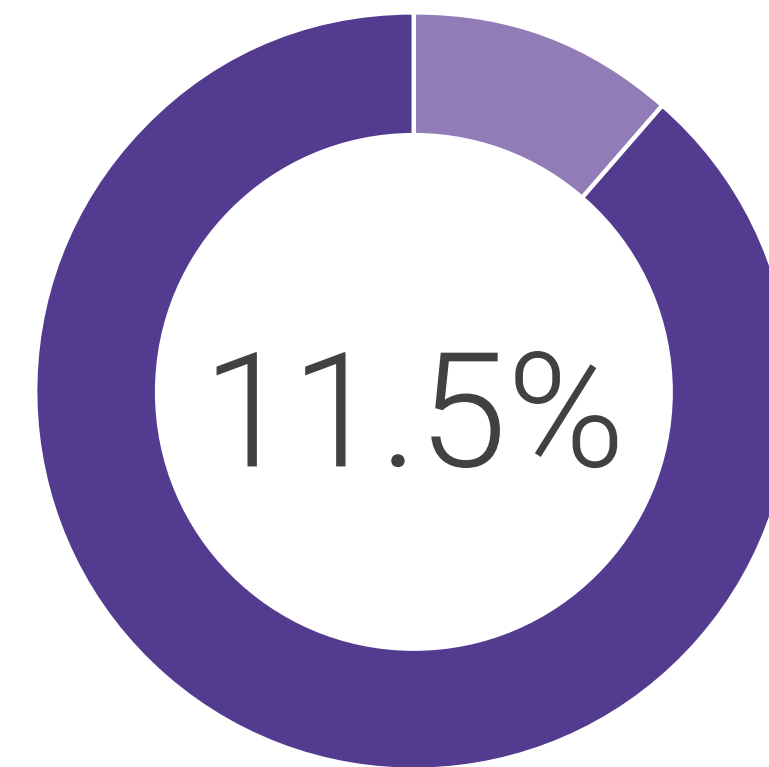
STUDENTS RECEIVING SPECIAL EDUCATION SERVICES



STUDENTS RECEIVING FREE OR REDUCED LUNCH



STUDENTS IDENTIFIED AS ENGLISH LANGUAGE LEARNERS

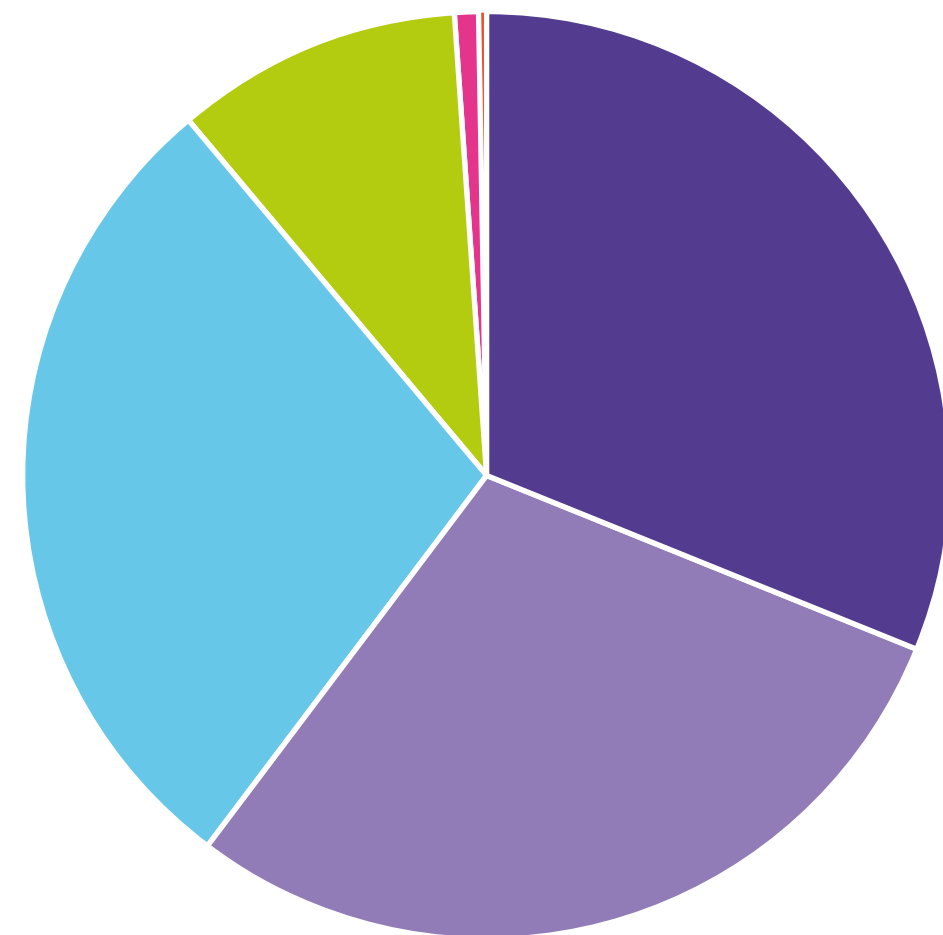


OVERVIEW OF 2020-21 FINANCIALS

TOTAL NWRES D RESOURCES

- **State, Federal & Private Grants** - \$41,067,998
- **State School Fund & Timber** - \$38,441,531
- **Charges for Services** - \$37,722,702
- **Property Taxes** - \$13,162,514
- **Sale of Capital Assets** - \$1,131,285
- **Other** - \$238,925

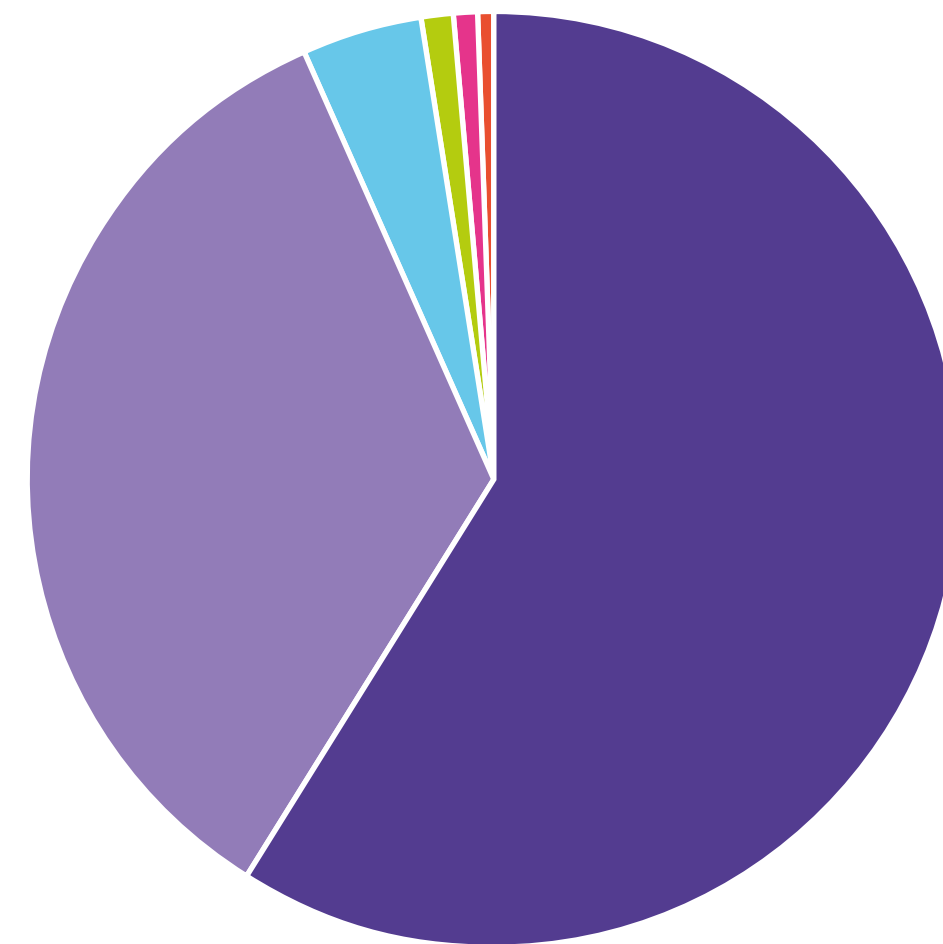
Total - \$131,764,955



TOTAL NWRES D EXPENDITURES

- **Support Services** - \$71,566,087
- **Instruction** - \$41,739,981
- **Apportionment of Funds** - \$5,115,906
- **Enterprises and Community Services** - \$1,563,512
- **Debt Service** - \$779,379
- **Capital Outlay and Construction** - \$602,022

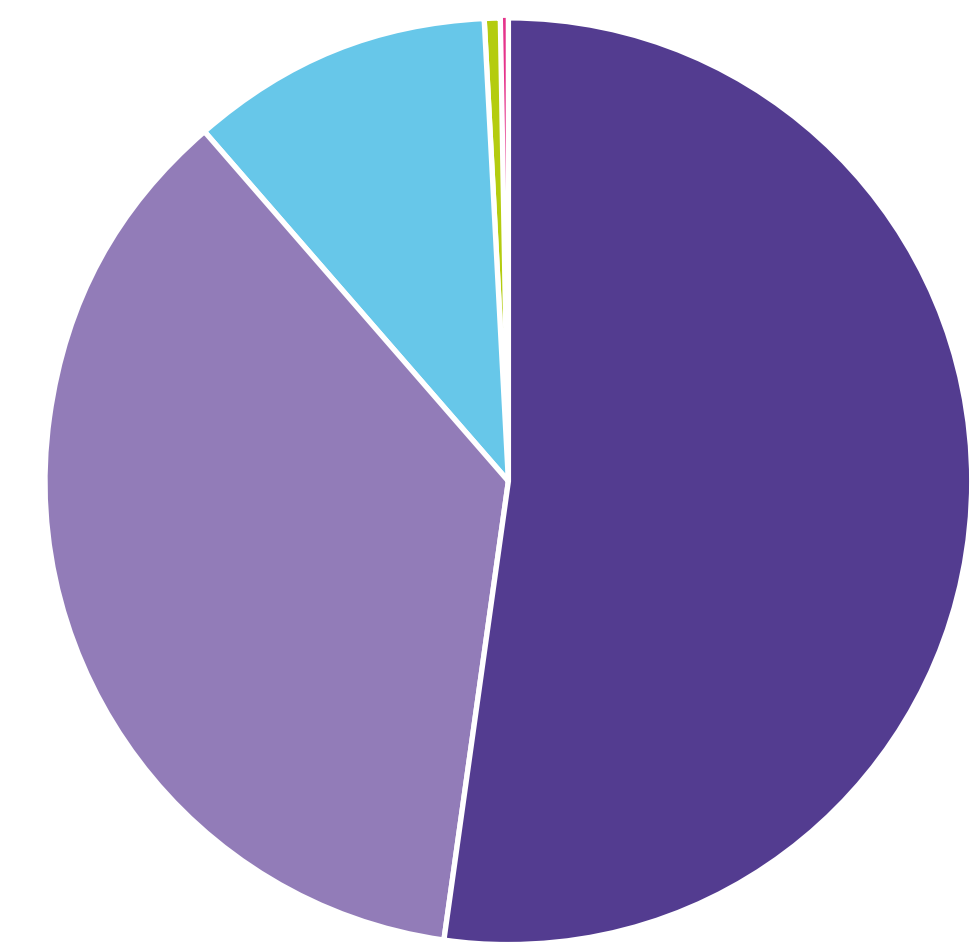
Total - \$121,366,887



2020-21 CORE SERVICES EXPENDITURES

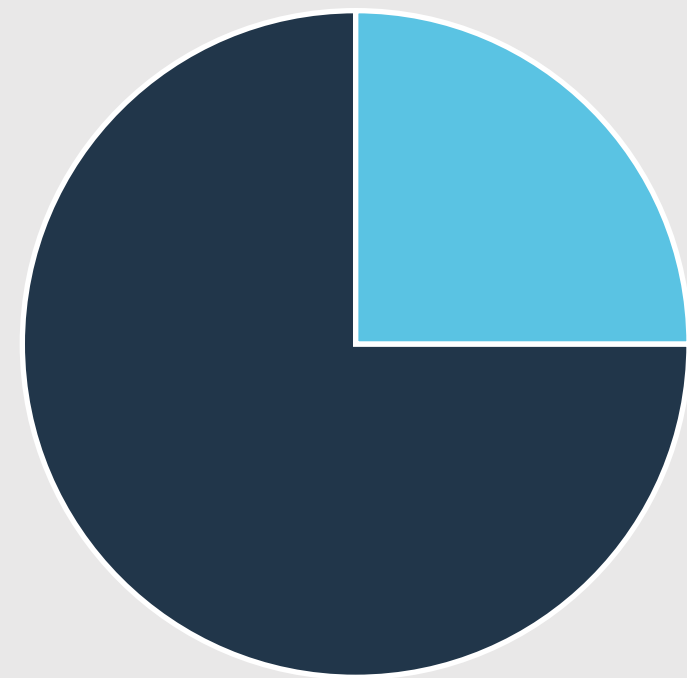
- **Technology** - \$2,437,748
- **County Allocations** - \$1,699,798
- **Instructional Services** - \$497,144
- **Home School Registration** - \$15,000
- **Emergency Closure** - \$10,500

Total - \$4,660,190



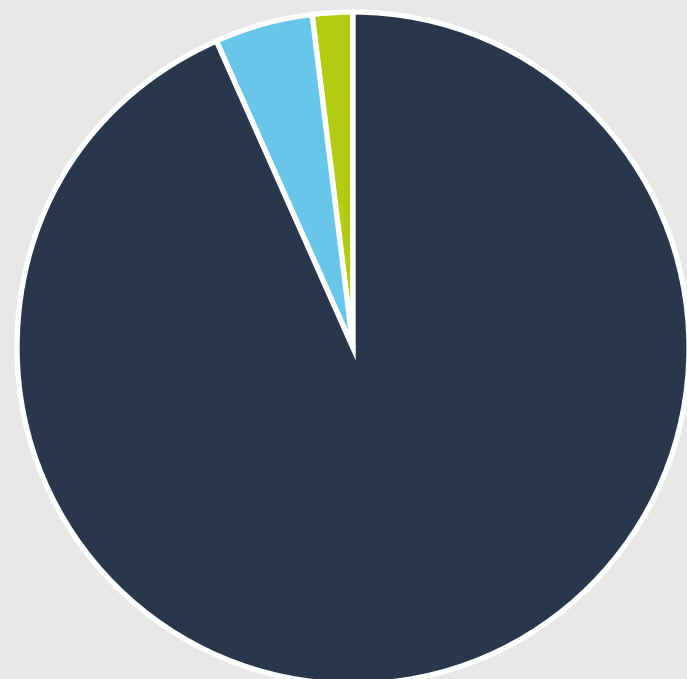
DISTRICT PROFILE: ASTORIA

LOCAL SERVICE PLAN RESOURCES



- **Service Credits** - \$613,998
- **Core Services** - \$204,666

SERVICE CREDIT SPENDING BY SERVICE AREA



- **Special Education** - \$750,645
- **Technology** - \$38,618
- **Instruction** - \$14,521

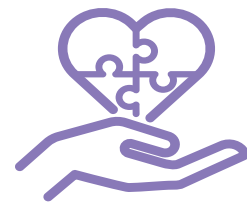
SUMMARY OF SERVICES PURCHASED FROM THE LOCAL SERVICE PLAN MENU

Instructional Services Total	\$14,521
Northwest Promise Membership	8,821
Ion MTSS Software	5,700
Special Education Services Total	\$750,645
Staffing Services	682,300
EI/ECSE Evaluations	55,686
Other Student Services	12,659
Technology Services Total	\$38,618
Infinite Visions	28,698
Regional Data Warehouse	4,950
CRIS - Background Checks	2,636
Other Technology Services	2,334
Total	\$803,784

ASTORIA PROGRAM HIGHLIGHTS



Early Intervention/Early Childhood
Special Education
**93 evaluations were conducted and 80
babies/children received services.**



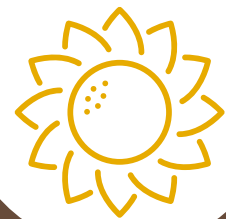
Autism
**37 students were supported by our
autism specialists.**



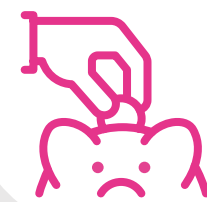
Equipment Center for Severe
Orthopedic Impairment
**4 students received critical equipment
to support mobility.**



Deaf/Hard of Hearing
**3 students who are deaf or hard of
hearing received services that helped
them fully access instruction.**



Migrant Education Program
**96 Astoria students whose families
migrate frequently for work received
academic and social support.**



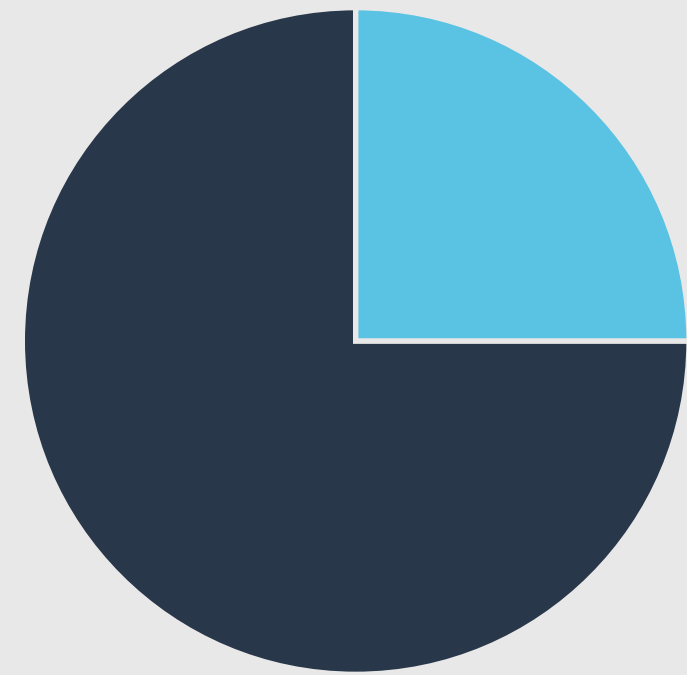
Medicaid Administrative Claiming
**\$70,981 in district funds recovered
through Medicaid claiming.**



Grant Funding
**\$366,279 total grant funding awarded
thanks to our grant writer, including
\$71,529 proportional benefit from
regional grants and \$294,750 in direct
funding for Astoria.**

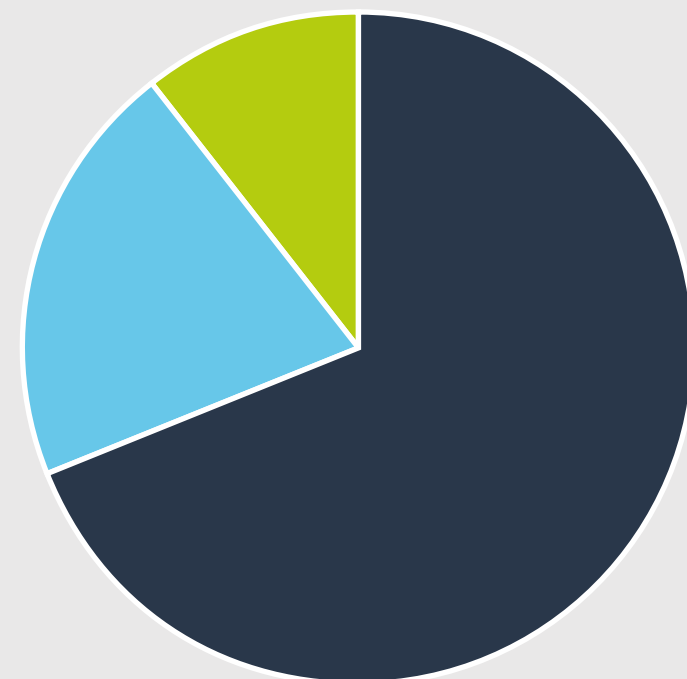
DISTRICT PROFILE: BANKS

LOCAL SERVICE PLAN RESOURCES



- **Service Credits** - \$359,240
- **Core Services** - \$119,747

SERVICE CREDIT SPENDING BY SERVICE AREA



- **Special Education** - \$442,086
- **Technology** - \$129,891
- **Instruction** - \$67,217

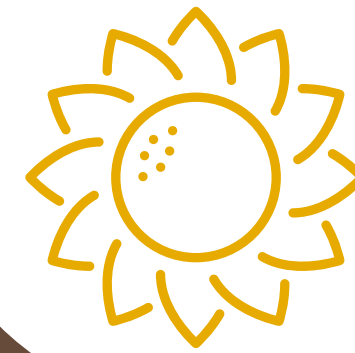
SUMMARY OF SERVICES PURCHASED FROM THE LOCAL SERVICE PLAN MENU

Instructional Services Total	\$67,217
Preschool Research Project	37,844
Outdoor School	23,200
Northwest Promise Membership	5,207
Other	966
Special Education Services Total	\$442,086
Staffing Services	427,396
EI/ECSE Evaluations	12,062
Other	2,628
Technology Services Total	\$129,891
Technology Purchasing	60,004
Technology Support	46,500
Other	23,387
Total	\$639,194

BANKS PROGRAM HIGHLIGHTS



Grant Funding Awarded
Banks SD benefited from a \$43,712 proportional benefit from regional competitive grants sought by NWRESD.



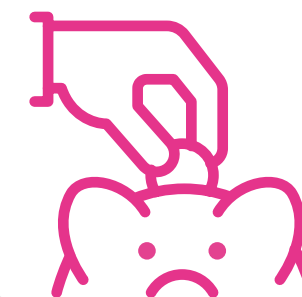
Migrant Education Program
20 Banks SD students whose families migrate frequently for work received academic and social support.



Early Intervention/Early Childhood Special Education
10 evaluations were conducted and 22 babies/children received services.



Special Student Services
19 students supported by our autism team, 2 by our orthopedic team, 2 by our vision team, and 1 by our deaf/hard of hearing team.



Northwest Promise
\$19,680 in tuition cost savings thanks to college credits offered to high school students.



Outdoor Science School
80 students were offered Outdoor School via Comprehensive Distance Learning.

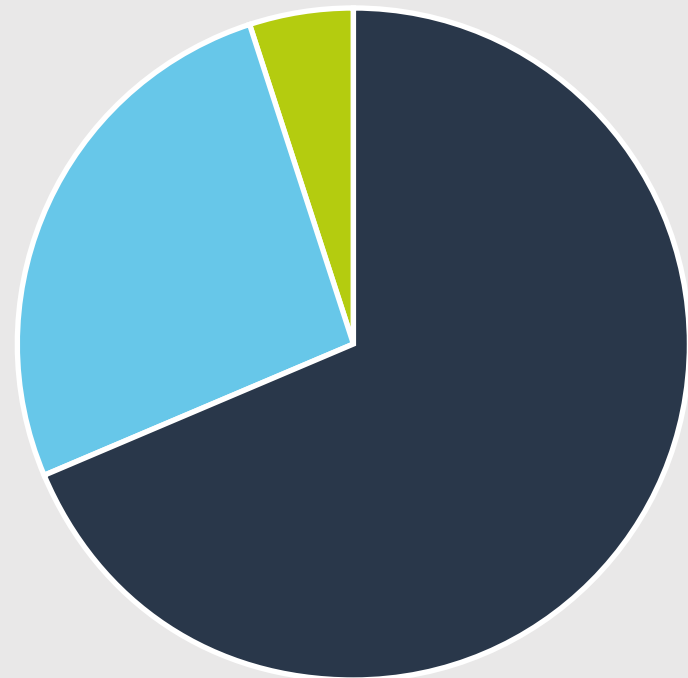
DISTRICT PROFILE: BEAVERTON

LOCAL SERVICE PLAN RESOURCES



■ **Service Credits** - \$17,875,065

SERVICE CREDIT SPENDING BY SERVICE AREA



■ **Special Education** - \$6,101,070

■ **Instruction** - \$2,336,307

■ **Technology** - \$425,431

SUMMARY OF SERVICES PURCHASED FROM THE LOCAL SERVICE PLAN MENU

Instructional Services Total **\$2,336,307**

Outdoor School	1,470,010
Regional Innovations	393,750
Professional Development Services	226,463
Northwest Promise Membership	200,408
Other	45,676

Special Education Services Total **\$6,101,070**

Student Programs/Classrooms	4,997,704
EI/ECSE Evaluations	966,693
Other	136,674

Technology Services Total **\$425,431**

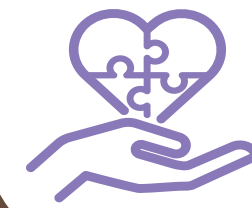
Destiny Library Services	118,271
ORSpED	108,061
Network Connectivity	85,363
Technical Engineering Cooperative	71,291
Other	42,444

Total **\$8,862,808**

BEAVERTON PROGRAM HIGHLIGHTS



Early Intervention/Early Childhood
Special Education
**821 evaluations were conducted
and 1,144 babies/children received
services.**



Special Student Services
**62 students supported by our deaf/
hard of hearing team, 41 by our vision
team, 5 by our orthopedic team, and 4
by our deafblind team.**



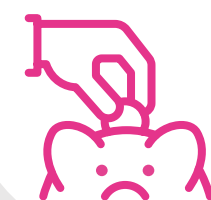
Social Emotional Learning
**88 Beaverton SD students attended our
five social emotional learning schools.**



Deaf/Hard of Hearing
**3 students who are deaf or hard of
hearing attended our program based at
Groner Elementary.**



Outdoor Science School
**5,069 students were offered Outdoor
School via Comprehensive Distance
Learning.**



Northwest Promise
**\$647,800 in tuition cost savings thanks
to college credits offered to high
school students.**



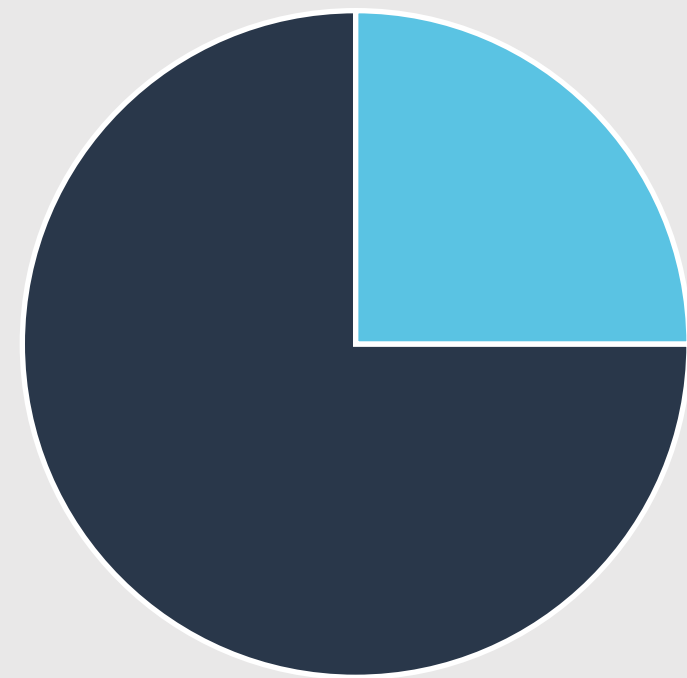
Diverse Educator Pathways
**3 high school students who aspire to
teach were coached and supported
through the Diverse Educator Pathways
program.**



Grant Funding Awarded
**Beaverton SD benefited from a
\$1,605,424 proportional benefit from
regional competitive grants sought by
NWRESD.**

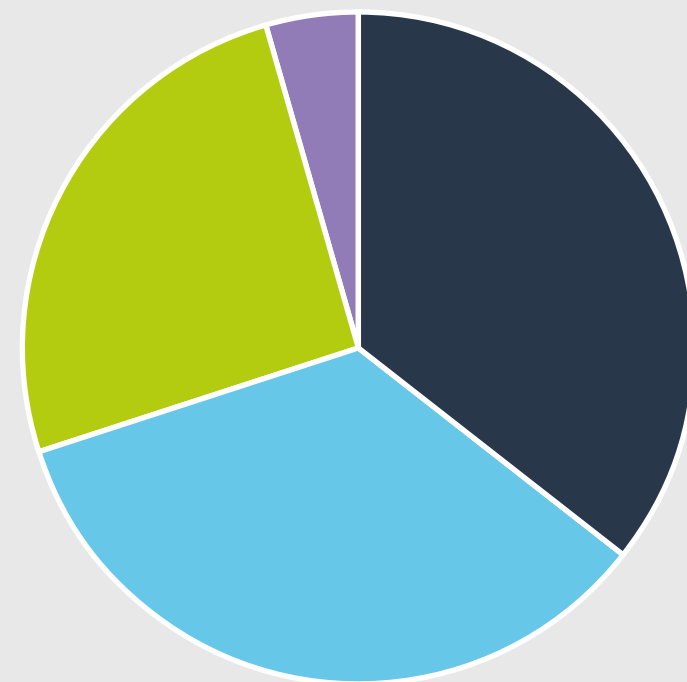
DISTRICT PROFILE: CLATSKANIE

LOCAL SERVICE PLAN RESOURCES



- **Service Credits** - \$268,811
- **Core Services** - \$89,604

SERVICE CREDIT SPENDING BY SERVICE AREA



- **Technology** - \$54,236
- **Special Education** - \$52,542
- **Administrative** - \$39,119
- **Instruction** - \$6,551

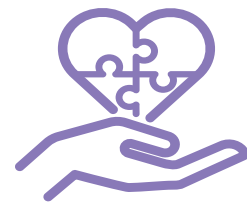
SUMMARY OF SERVICES PURCHASED FROM THE LOCAL SERVICE PLAN MENU

Administrative Services Total	\$39,119
Business Services	29,250
Substitute Management Services	5,144
Medicaid Technical Guidance	4,725
Instructional Services Total	\$6,551
Northwest Promise Membership	4,151
Ion MTSS Software	2,400
Special Education Services Total	\$52,542
Staffing Services	30,770
EI/ECSE Evaluations	21,772
Technology Services Total	\$54,236
Distance Learning Technology	23,917
Infinite Visions	18,044
Technology Support	8,720
Other	3,555
Total	\$152,448

CLATSKANIE PROGRAM HIGHLIGHTS



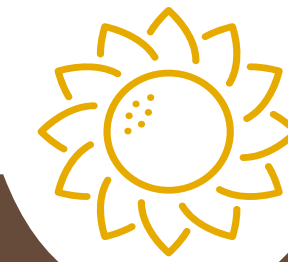
Early Intervention/Early Childhood
Special Education
20 evaluations were conducted and 42 babies/children received services.



Special Student Services
25 students supported by our autism team, 4 by our orthopedic team, 2 by our vision team, 2 by our deaf/hard of hearing team and 1 by our traumatic brain injury team.



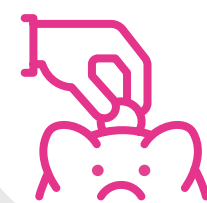
ORVED
30 ORVED virtual courses taken.



Migrant Education Program
9 Clatskanie SD students whose families migrate frequently for work received academic and social support.



Substitute Services
726 sub requests filled.



Northwest Promise
\$14,760 in tuition cost savings thanks to college credits offered to high school students.



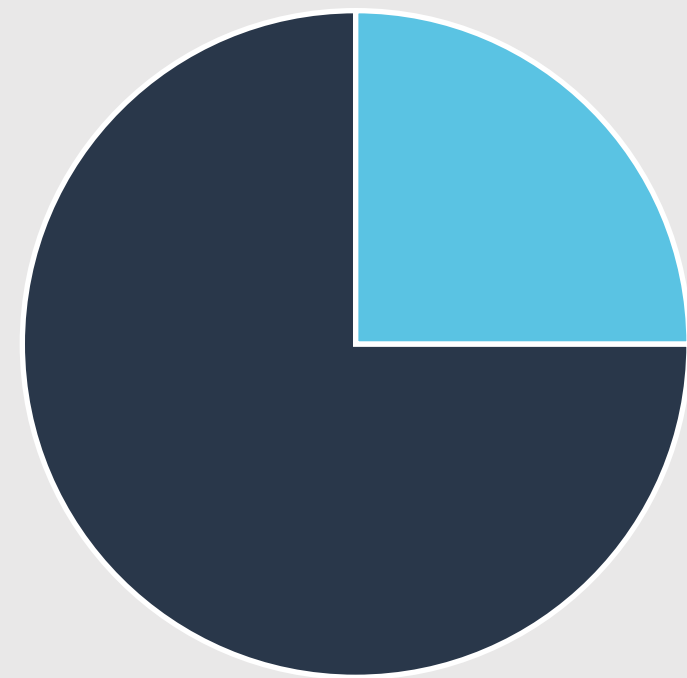
Medicaid Administrative Claiming
\$26,453 in district funds recovered through Medicaid claiming.



Grant Funding Awarded
Clatskanie SD benefited from a \$27,817 proportional benefit from regional competitive grants sought by NWRESD.

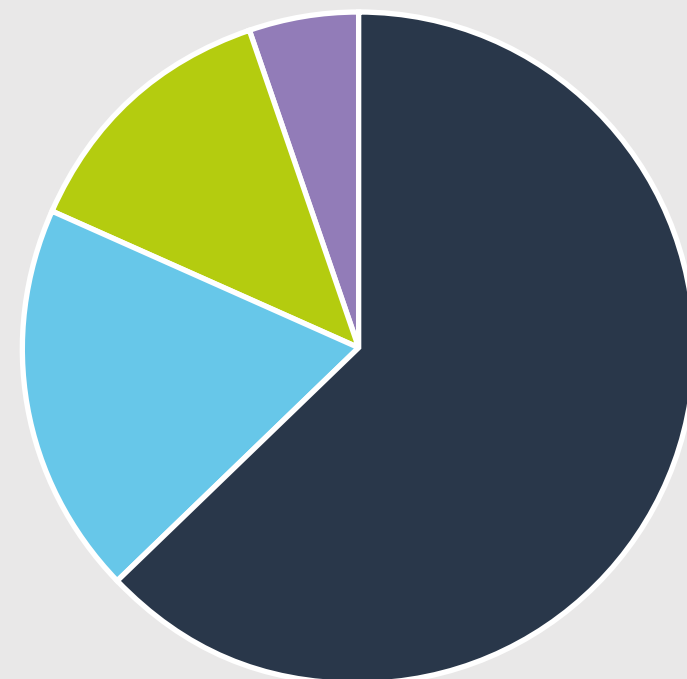
DISTRICT PROFILE: FOREST GROVE

LOCAL SERVICE PLAN RESOURCES



- **Service Credits** - \$2,088,818
- **Core Services** - \$696,273

SERVICE CREDIT SPENDING BY SERVICE AREA



- **Special Education** - \$313,198
- **Technology** - \$93,015
- **Instruction** - \$65,549
- **Administrative** - \$25,260

SUMMARY OF SERVICES PURCHASED FROM THE LOCAL SERVICE PLAN MENU

Administrative Services Total	\$25,260
Substitute Management Services	25,260
Instructional Services Total	\$65,549
Northwest Promise	31,536
Diverse Educator Pathways Program	22,400
Attendance Services	6,383
Preschool Research Project	5,000
Other	230
Special Education Services Total	\$313,198
EI/ECSE Evaluations	154,813
Student Programs/Classrooms	150,712
Other	7,673
Technology Services Total	\$93,015
Infinite Visions	70,509
Regional Data Warehouse	16,761
Other	5,745
Total	\$497,022

FOREST GROVE PROGRAM HIGHLIGHTS

Early Intervention/Early Childhood Special Education

123 evaluations were conducted and 187 babies/children received services.

Special Student Services

19 students supported by our orthopedic team, 10 by our vision team, 8 by our deaf/hard of hearing team, 2 by our deafblind team, 1 by our traumatic brain injury team.

Social Emotional Learning

1 Forest Grove student attended one of our social emotional learning schools.

Substitute Services

2,255 sub requests filled.



Northwest Promise

\$135,300 in tuition cost savings thanks to college credits offered to high school students.

Medicaid Administrative Claiming

\$52,679 in district funds recovered through Medicaid claiming.

Diverse Educator Pathways

1 classified employee and 7 high school students who aspire to teach were coached and supported through the Diverse Educator Pathways program.

Grant Funding Awarded

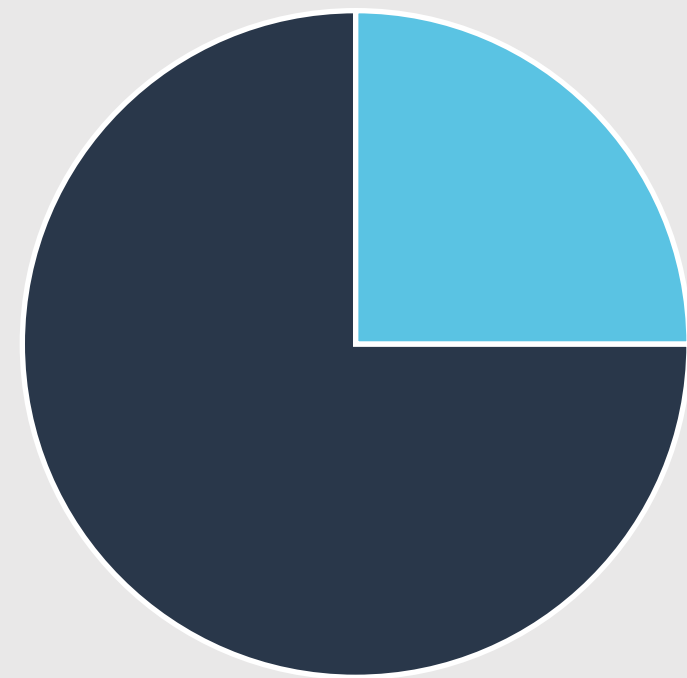
\$899,331 total grant funding awarded thanks to our grant writer, including \$234,456 proportional benefit from regional grants and \$664,875 in direct funding for Forest Grove.

Outdoor Science School

471 students were offered Outdoor School via Comprehensive Distance Learning.

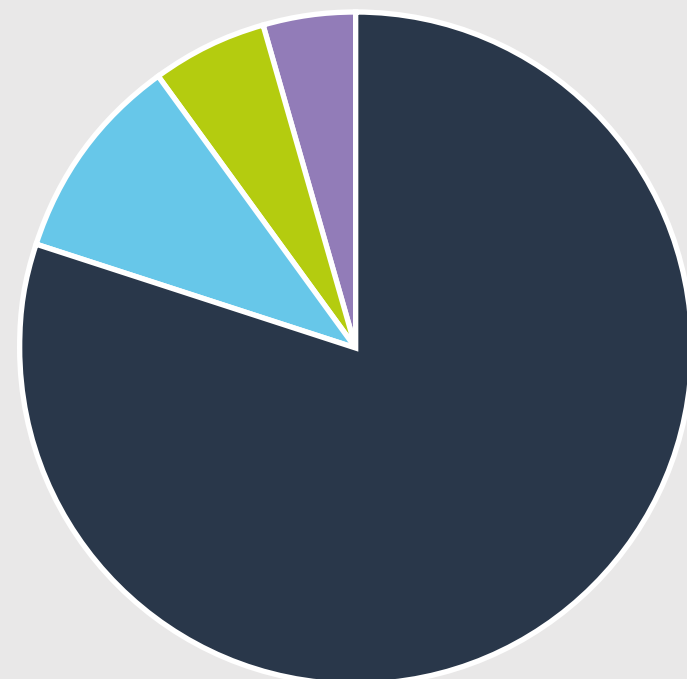
DISTRICT PROFILE: GASTON

LOCAL SERVICE PLAN RESOURCES



- **Service Credits** - \$211,841
- **Core Services** - \$70,614

SERVICE CREDIT SPENDING BY SERVICE AREA



- **Special Education** - \$277,042
- **Technology** - \$34,058
- **Instruction** - \$19,078
- **Administrative** - \$15,000

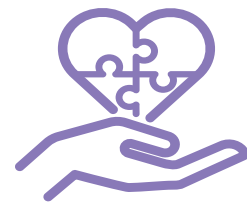
SUMMARY OF SERVICES PURCHASED FROM THE LOCAL SERVICE PLAN MENU

Administrative Services Total	\$15,000
Business Services	15,000
Instructional Services Total	\$19,078
Outdoor School	13,920
Northwest Promise	2,858
Ion MTSS Software	1,500
Preschool Research Project	800
Special Education Services Total	\$277,042
Staffing Services	158,459
Student Programs/Classrooms	103,864
Other	14,719
Technology Services Total	\$34,058
Infinite Visions	17,273
Technology Support	15,000
Other	1,785
Total	\$345,178

GASTON PROGRAM HIGHLIGHTS



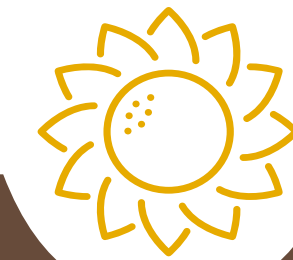
Early Intervention/Early Childhood
Special Education
**16 evaluations were conducted and 26
babies/children received services.**



Special Student Services
**7 students supported by our autism
team and 1 by our vision team.**



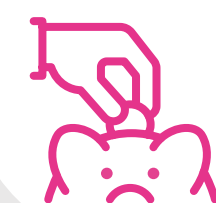
Social Emotional Learning
**2 Gaston students attended our social
emotional learning schools.**



Migrant Education Program
**7 Gaston SD students whose families
migrate frequently for work received
academic and social support.**



Outdoor Science School
**48 students were offered Outdoor
School via Comprehensive Distance
Learning.**



Northwest Promise
**\$9,840 in tuition cost savings thanks to
college credits offered to high school
students.**



Diverse Educator Pathways
**1 classified employee and 2 Gaston
community members who aspire to
teach were coached and supported
through the Diverse Educator Pathways
program.**



Grant Funding Awarded
**Gaston SD benefited from a \$19,869
proportional benefit from regional
competitive grants sought by NWRESD.**

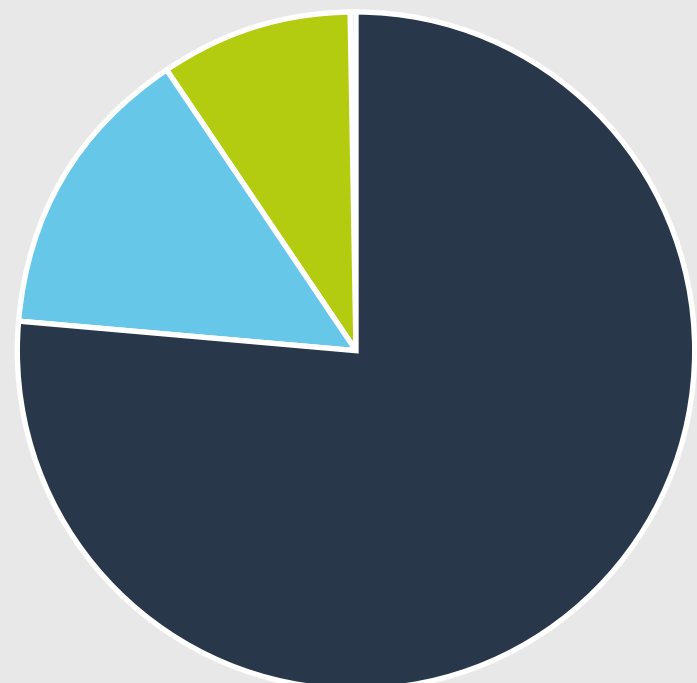
DISTRICT PROFILE: HILLSBORO

LOCAL SERVICE PLAN RESOURCES



■ **Service Credits** - \$9,202,378

SERVICE CREDIT SPENDING BY SERVICE AREA



■ **Special Education** - \$4,965,288

■ **Instruction** - \$936,883

■ **Technology** - \$594,622

■ **Administrative** - \$3,065

SUMMARY OF SERVICES PURCHASED FROM THE LOCAL SERVICE PLAN MENU

Administrative Services	\$3,065
Business Services	3,065
Instructional Services Total	\$936,883
Outdoor School	352,800
Regional Innovations	225,000
Professional Development Services	116,587
Northwest Promise	103,567
Fire Science Program	100,529
Diverse Educator Pathways Program	22,400
Preschool Research Project	16,000
Special Education Services Total	\$4,965,288
Student Programs/Classrooms	3,016,364
Staffing Services	1,448,133
EI/ECSE Evaluations	498,635
Other	2,156
Technology Services Total	\$594,622
Infinite Visions	181,031
Synergy/Synergy Applications	133,311
Destiny Library Services	92,760
ORSpED	54,170
Network Connectivity	44,832
Technical Engineering Cooperative	35,737
Other	52,781
Total	\$6,499,858

Early Intervention/Early Childhood Special Education

439 evaluations were conducted and 730 babies/children received services.

Special Student Services

35 students supported by our deaf/hard of hearing team, 30 by our orthopedic team, 21 by our vision team, 5 by our traumatic brain injury team, 4 by our deafblind team.

Social Emotional Learning

46 Hillsboro students attended our five social emotional learning schools.

Deaf/Hard of Hearing

1 Hillsboro student who is deaf or hard of hearing attended our program based at Groner Elementary.



Northwest Promise

\$260,965 in tuition cost savings thanks to college credits offered to high school students.

Medicaid Administrative Claiming

\$87,645 in district funds recovered through Medicaid claiming.

Diverse Educator Pathways

4 high school students, 18 classified employees and 2 community members who aspire to teach were coached and supported through the Diverse Educator Pathways program.

Grant Funding Awarded

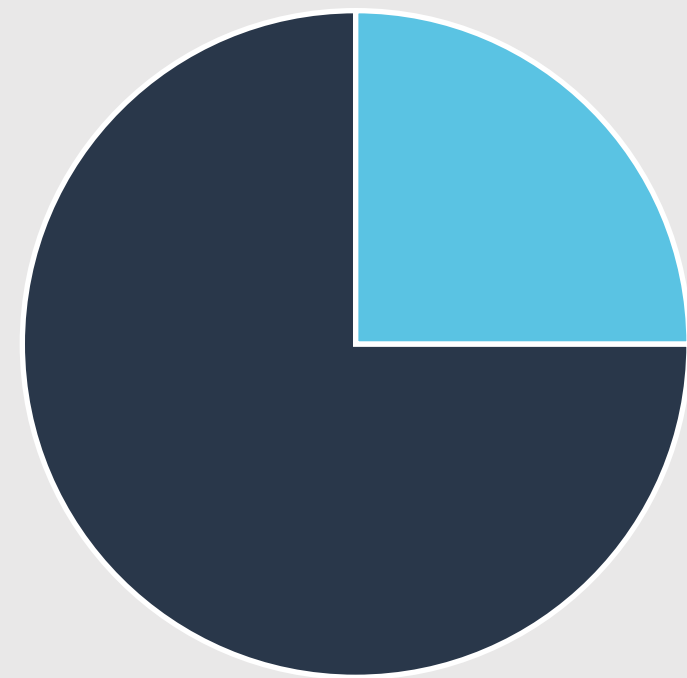
\$1,403,817 total grant funding awarded thanks to our grant writer, including \$786,817 proportional benefit from regional grants and \$617,000 in direct funding for Hillsboro.

Outdoor Science School

1,575 students were offered Outdoor School via Comprehensive Distance Learning.

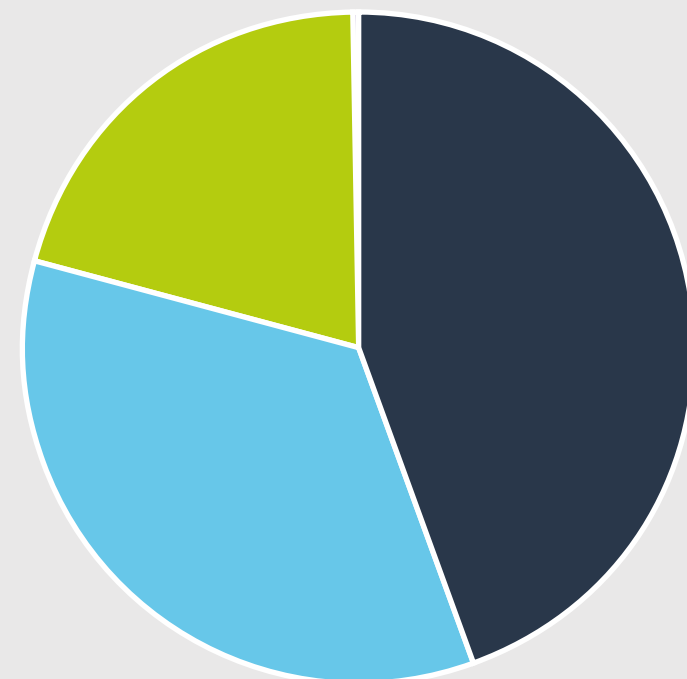
DISTRICT PROFILE: JEWELL

LOCAL SERVICE PLAN RESOURCES



- **Service Credits** - \$83,070
- **Core Services** - \$27,690

SERVICE CREDIT SPENDING BY SERVICE AREA



- **Technology** - \$165,506
- **Special Education** - \$128,869
- **Administrative** - \$76,851
- **Instruction** - \$600

SUMMARY OF SERVICES PURCHASED FROM THE LOCAL SERVICE PLAN MENU

Administrative Services Total	\$76,851
Business Services	73,240
Substitute Services	3,611
Instructional Services Total	\$600
Ion MTSS Software	600
Special Education Services Total	\$128,869
Staffing Services	125,036
Youth Transition Program	3,574
EI/ECSE Evaluations	259
Technology Services Total	\$165,506
Technology Support	73,900
Technology Purchasing	70,422
Other	21,184
Total	\$371,826

JEWELL PROGRAM HIGHLIGHTS



Grant Funding Awarded

\$127,724 total grant funding awarded thanks to our grant writer, including \$3,974 proportional benefit from regional grants and \$123,750 in direct funding for Jewell.



Early Intervention/Early Childhood Special Education

4 evaluations were conducted and 7 babies/children received services.



Special Student Services

3 students were supported by our autism team.

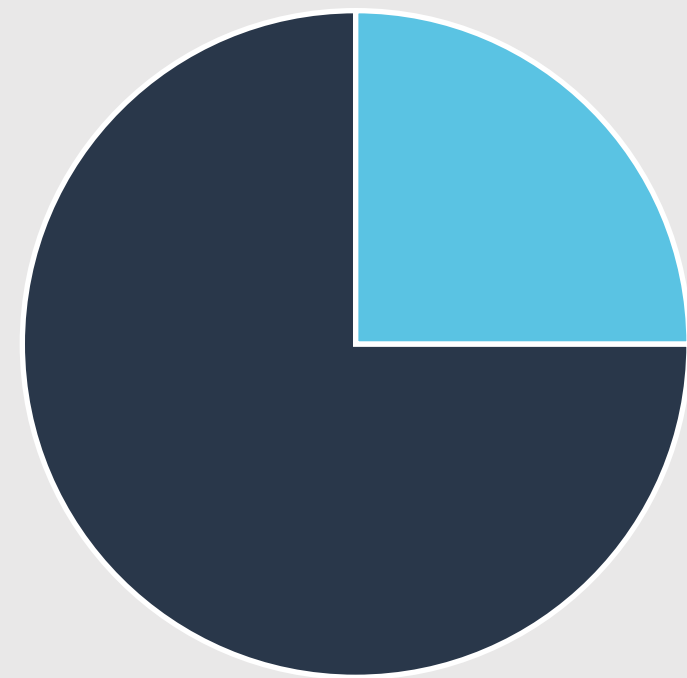


Substitute Services

261 sub requests filled.

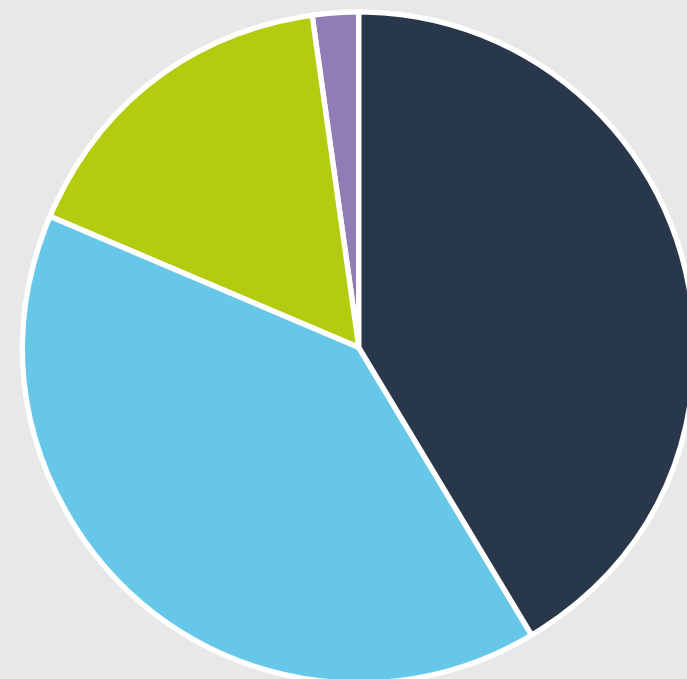
DISTRICT PROFILE: KNAPPA

LOCAL SERVICE PLAN RESOURCES



- **Service Credits** - \$185,622
- **Core Services** - \$61,874

SERVICE CREDIT SPENDING BY SERVICE AREA



- **Technology** - \$81,692
- **Special Education** - \$78,455
- **Administrative** - \$32,250
- **Instruction** - \$4,477

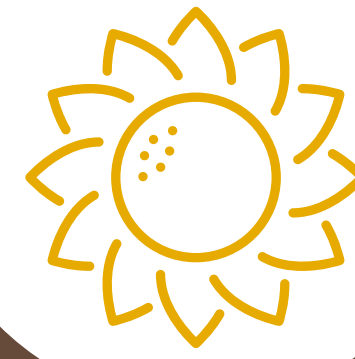
SUMMARY OF SERVICES PURCHASED FROM THE LOCAL SERVICE PLAN MENU

Administrative Services	\$32,250
Business Services	32,250
Instructional Services Total	\$4,477
Northwest Promise	2,727
Ion MTSS Software	1,500
Workshops/Trainings	250
Special Education Services Total	\$78,455
Staffing Services	52,877
EI/ECSE Evaluations	16,282
Other	9,296
Technology Services Total	\$81,692
ORVED Tuition	36,285
Infinite Visions	28,360
Distance Learning Technology	16,606
Other	441
Total	\$196,874

KNAPPA PROGRAM HIGHLIGHTS



Grant Funding Awarded
Knappa SD benefited from a \$19,869 proportional benefit from regional competitive grants sought by NWRESD.



Migrant Education Program
2 Knappa SD students whose families migrate frequently for work received academic and social support.



Early Intervention/Early Childhood
Special Education
19 evaluations were conducted and 26 babies/children received services.



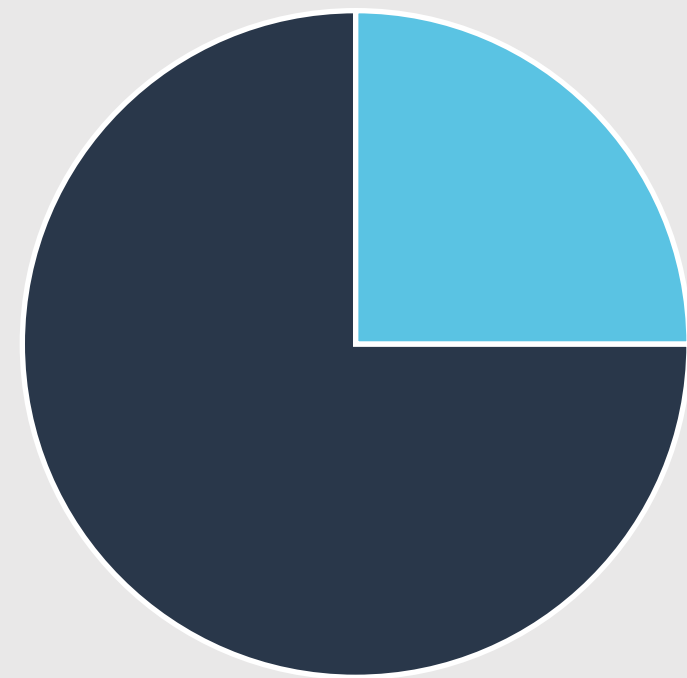
Special Student Services
10 students supported by our autism team, 2 by our deaf/hard of hearing team and 1 by our orthopedic team.



ORVED
286 ORVED virtual courses taken by Knappa students.

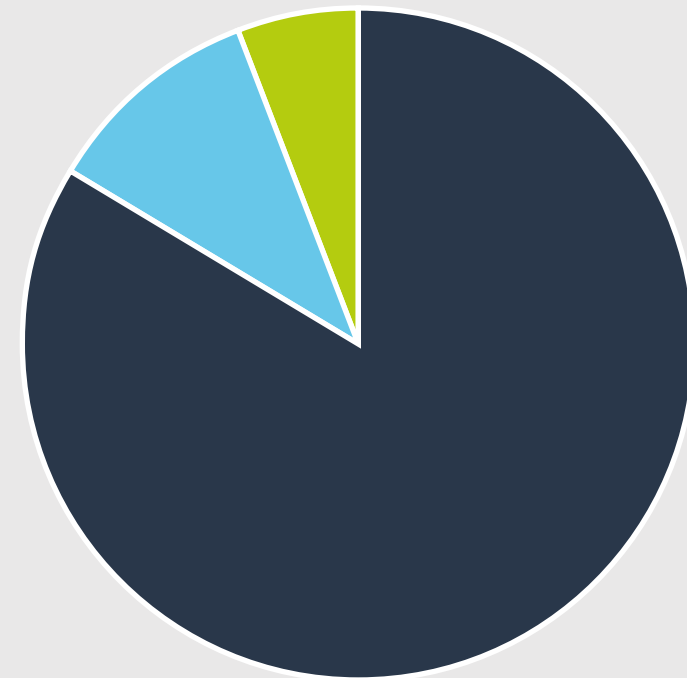
DISTRICT PROFILE: NEAH-KAH-NIE

LOCAL SERVICE PLAN RESOURCES



- **Service Credits** - \$288,464
- **Core Services** - \$96,155

SERVICE CREDIT SPENDING BY SERVICE AREA



- **Special Education** - \$319,498
- **Technology** - \$39,582
- **Instruction** - \$21,890

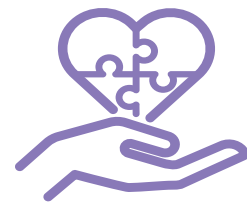
SUMMARY OF SERVICES PURCHASED FROM THE LOCAL SERVICE PLAN MENU

Instructional Services Total	\$21,890
Tillamook Education Consortium	15,000
Northwest Promise	4,490
Ion MTSS Software	2,400
Special Education Services Total	\$319,498
Staffing Services	307,705
EI/ECSE Evaluations	11,793
Technology Services Total	\$39,582
Infinite Visions	20,673
Technology Support	11,500
Distance Learning Technology	4,248
Other	3,161
Total	\$380,970

NEAH-KAH-NIE PROGRAM HIGHLIGHTS



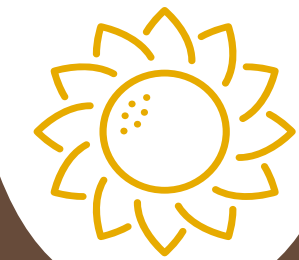
Early Intervention/Early Childhood
Special Education
11 evaluations were conducted and 15 babies/children received services.



Special Student Services
17 students supported by our autism team, 2 by our deaf/hard of hearing team, 1 by our orthopedic team and 1 by our vision team.



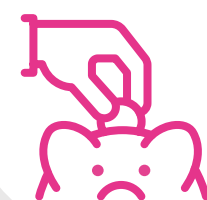
Grant Funding Awarded
\$197,317 total grant funding awarded thanks to our grant writer, including \$27,817 proportional benefit from regional grants and \$169,500 in direct funding for Neah-Kah-Nie.



Migrant Education Program
11 Neah-Kah-Nie SD students whose families migrate frequently for work received academic and social support.



Diverse Educator Pathways
4 Neah-Kah-Nie high school students and 2 classified staff who aspire to teach were coached and supported through the Diverse Educator Pathways program.



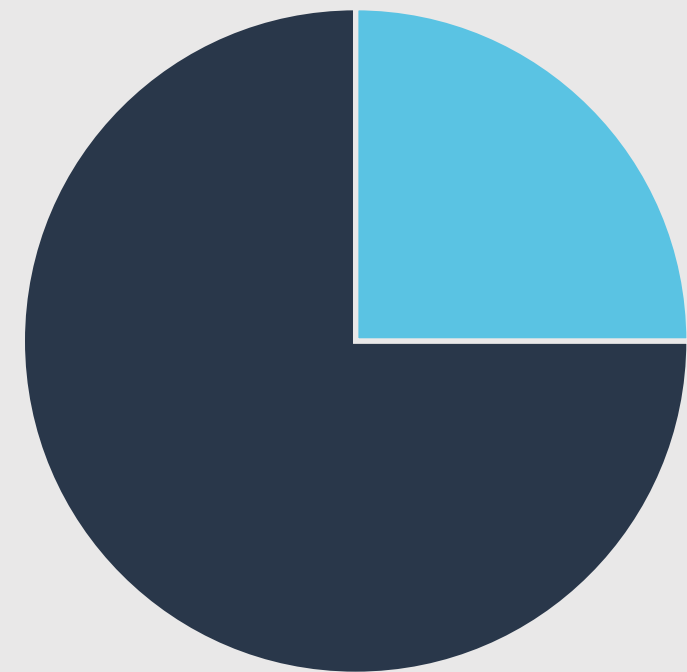
Northwest Promise
\$5,535 in tuition cost savings thanks to college credits offered to high school students.



ORVED
9 ORVED virtual course taken by Neah-Kah-Nie students.

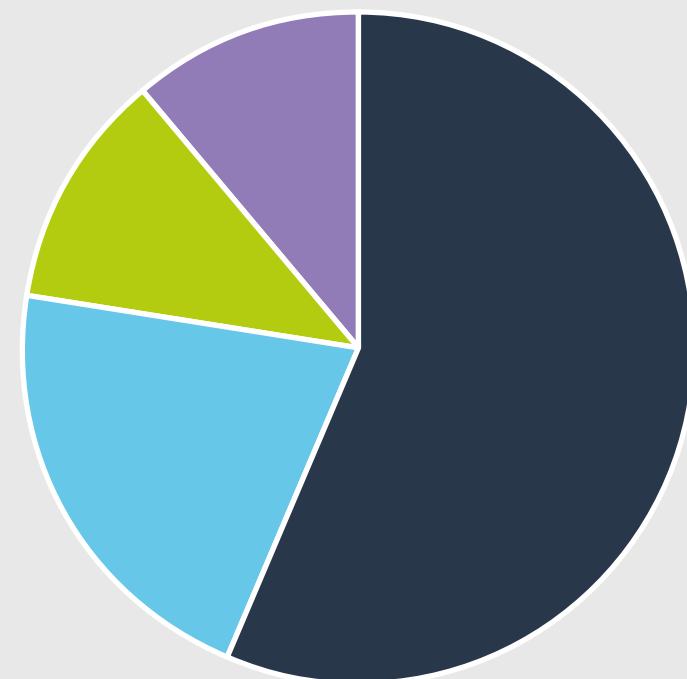
DISTRICT PROFILE: NESTUCCA VALLEY

LOCAL SERVICE PLAN RESOURCES



- **Service Credits** - \$193,385
- **Core Services** - \$64,462

SERVICE CREDIT SPENDING BY SERVICE AREA



- **Special Education** - \$198,813
- **Administrative** - \$74,725
- **Technology** - \$39,596
- **Instruction** - \$39,055

SUMMARY OF SERVICES PURCHASED FROM THE LOCAL SERVICE PLAN MENU

Administrative Services Total	\$74,725
Business Services	71,114
Substitute Services	3,611
Instructional Services Total	\$39,055
Outdoor School	21,170
Tillamook Education Consortium	15,000
Northwest Promise	2,885
Special Education Services Total	\$198,813
Staffing Services	192,884
EI/ECSE Evaluations	5,929
Technology Services Total	\$39,596
Infinite Visions	20,674
Distance Learning Technology	16,209
Other	2,713
Total	\$352,189

NESTUCCA VALLEY PROGRAM HIGHLIGHTS



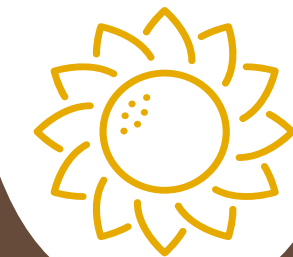
Early Intervention/Early Childhood
Special Education
5 evaluations were conducted and 11 babies/children received services.



Special Student Services
10 students supported by our autism team, 3 by our orthopedic team, 1 by our vision team, 1 by our traumatic brain injury team.



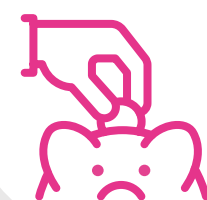
Outdoor Science School
73 students were offered Outdoor School via Comprehensive Distance Learning.



Migrant Education Program
19 Nestucca Valley SD students whose families migrate frequently for work received academic and social support.



Diverse Educator Pathways
3 Nestucca Valley high school students and 2 community members who aspire to teach were coached and supported through the Diverse Educator Pathways program.



Northwest Promise
\$1,640 in tuition cost savings thanks to college credits offered to high school students.



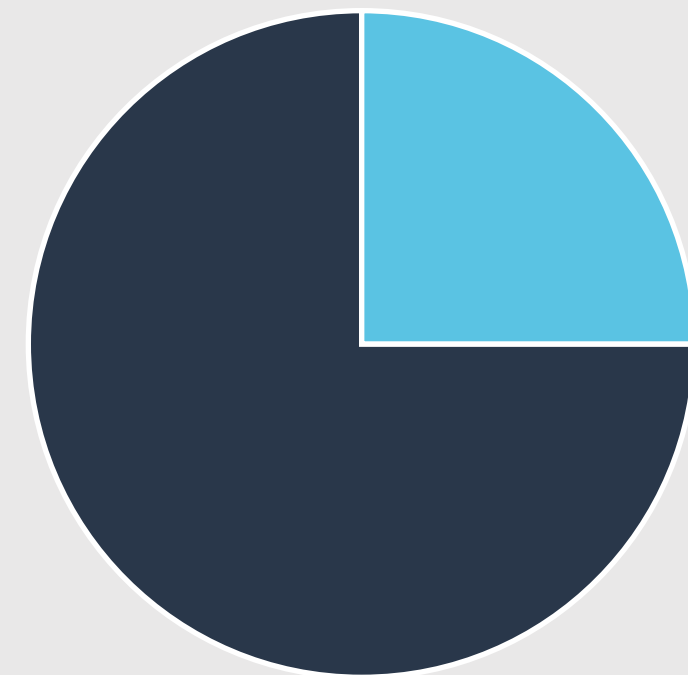
Substitute Services
258 sub requests filled.



Grant Funding Awarded
\$206,269 total grant funding awarded thanks to our grant writer, including \$19,869 proportional benefit from regional grants and \$186,400 in direct funding for Nestucca Valley.

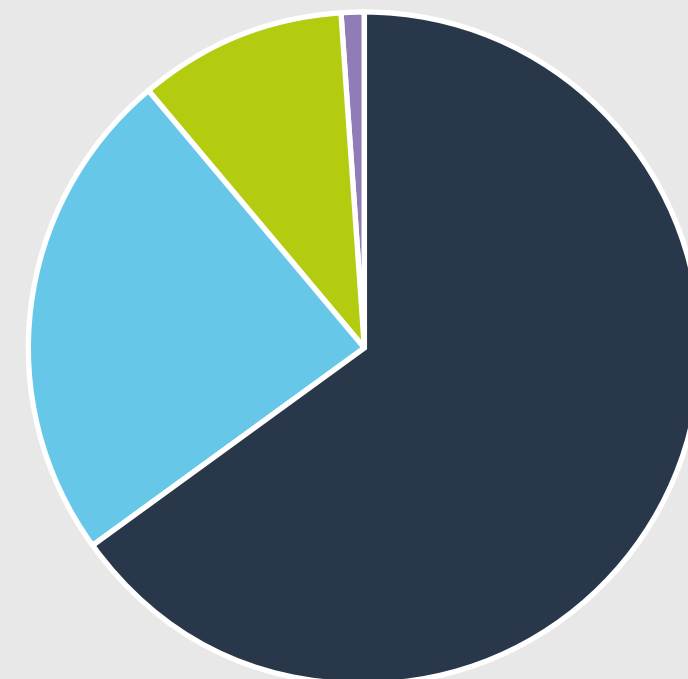
DISTRICT PROFILE: RAINIER

LOCAL SERVICE PLAN RESOURCES



- **Service Credits** - \$293,349
- **Core Services** - \$97,783

SERVICE CREDIT SPENDING BY SERVICE AREA



- **Special Education** - \$263,496
- **Administrative** - \$96,455
- **Technology** - \$40,453
- **Instruction** - \$4,206

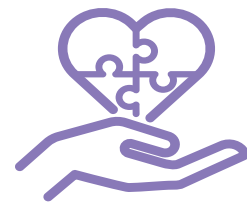
SUMMARY OF SERVICES PURCHASED FROM THE LOCAL SERVICE PLAN MENU

Administrative Services Total	\$96,455
Business Services	96,455
Instructional Services Total	\$4,206
Northwest Promise	4,206
Special Education Services Total	\$263,496
Staffing Services	241,309
EI/ECSE Evaluations	22,187
Technology Services Total	\$40,453
Infinite Visions	19,991
Technology Support	11,500
Other	8,962
Total	\$404,610

RAINIER PROGRAM HIGHLIGHTS



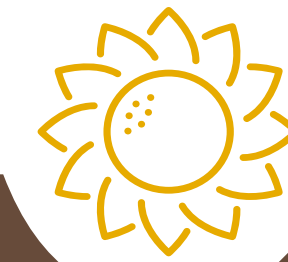
Early Intervention/Early Childhood
Special Education
19 evaluations were conducted and 32 babies/children received services.



Special Student Services
8 students supported by our autism team, 2 by our orthopedic team, 1 by our vision team, 1 by our traumatic brain injury team.



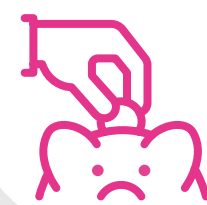
ORVED
3 ORVED virtual course taken by Rainier students.



Migrant Education Program
6 Rainier SD students whose families migrate frequently for work received academic and social support.



Medicaid Administrative Claiming
\$73,891 in district funds recovered through Medicaid claiming.



Northwest Promise
\$32,800 in tuition cost savings thanks to college credits offered to high school students.



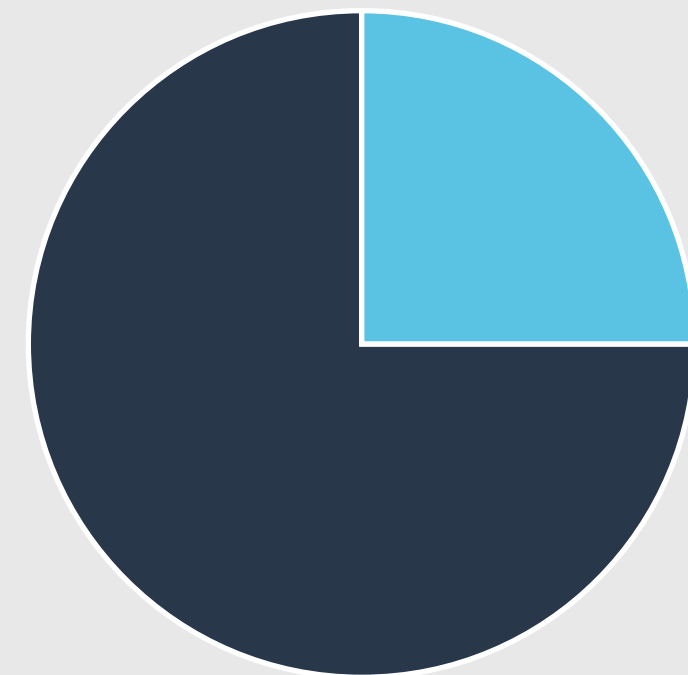
Substitute Services
545 sub requests filled.



Grant Funding Awarded
\$258,514 total grant funding awarded thanks to our grant writer, including \$35,764 proportional benefit from regional grants and \$222,750 in direct funding for Rainier.

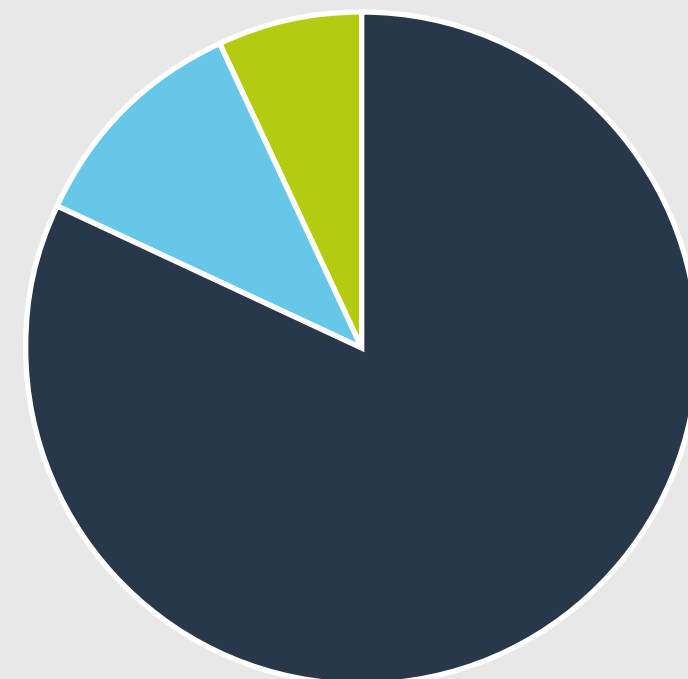
DISTRICT PROFILE: SCAPPOOSE

LOCAL SERVICE PLAN RESOURCES



- **Service Credits** - \$785,034
- **Core Services** - \$261,678

SERVICE CREDIT SPENDING BY SERVICE AREA



- **Special Education** - \$907,712
- **Technology** - \$122,871
- **Instruction** - \$75,813

SUMMARY OF SERVICES PURCHASED FROM THE LOCAL SERVICE PLAN MENU

Instructional Services Total	\$75,813
Outdoor School	53,359
Northwest Promise	11,193
Other	11,261
Special Education Services Total	\$907,712
Staffing Services	563,830
Student Programs/Classrooms	315,269
EI/ECSE Evaluations	28,613
Technology Services Total	\$122,871
Distance Learning Technology	79,557
Infinite Visions	29,682
Technology Support	11,500
Other	2,132
Total	\$1,106,396

SCAPPOOSE PROGRAM HIGHLIGHTS

Early Intervention/Early Childhood Special Education

27 evaluations were conducted and 66 babies/children received services.

Special Student Services

36 students supported by our autism team, 4 by our deaf/hard of hearing team, 4 by our orthopedic team, 2 by our vision team, 1 by our deafblind team.

Social Emotional Learning

3 Scappoose students attended our social emotional learning schools.

Deaf/Hard of Hearing

1 Scappoose student who is deaf or hard of hearing attended our program based at Groner Elementary.

Northwest Promise

\$102,500 in tuition cost savings thanks to college credits offered to high school students.

Medicaid Administrative Claiming

\$152,822 in district funds recovered through Medicaid claiming.

Migrant Education Program

48 Scappoose SD students whose families migrate frequently for work received academic and social support.

Grant Funding Awarded

\$177,424 total grant funding awarded thanks to our grant writer, including \$87,424 proportional benefit from regional grants and \$90,000 in direct funding for Scappoose.

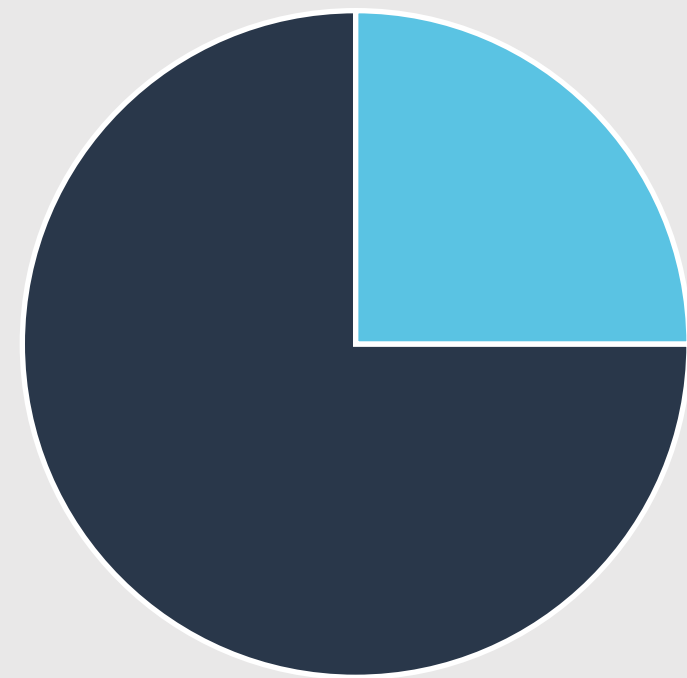
Outdoor Science School

184 students were offered Outdoor School via Comprehensive Distance Learning.



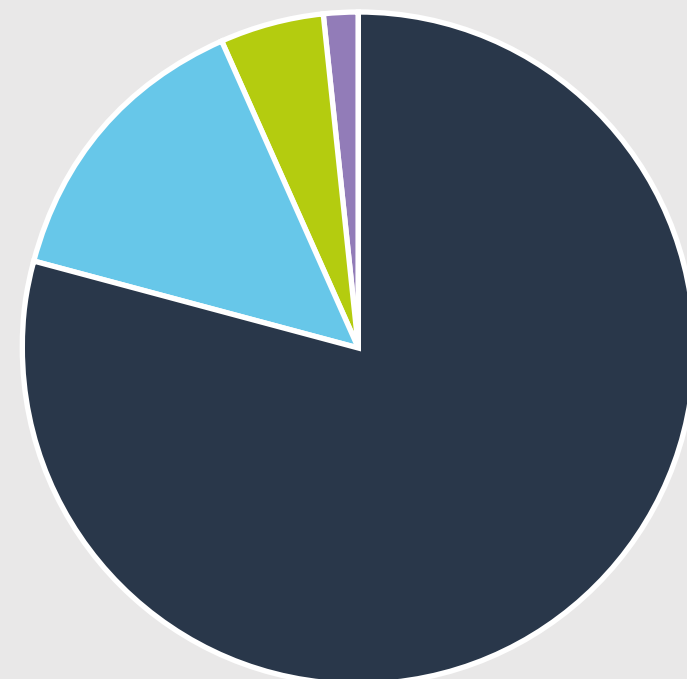
DISTRICT PROFILE: SEASIDE

LOCAL SERVICE PLAN RESOURCES



- **Service Credits** - \$557,454
- **Core Services** - \$185,818

SERVICE CREDIT SPENDING BY SERVICE AREA



- **Special Education** - \$725,400
- **Technology** - \$130,425
- **Instruction** - \$43,948
- **Administrative** - \$14,350

SUMMARY OF SERVICES PURCHASED FROM THE LOCAL SERVICE PLAN MENU

Administrative Services Total	\$14,350
Business Services	14,350
Instructional Services Total	\$43,948
Outdoor School	39,148
Ion MTSS Software	4,800
Special Education Services Total	\$725,400
Staffing Services	675,894
EI/ECSE Evaluations	35,072
Other	14,434
Technology Services Total	\$130,425
Distance Learning Technology	93,715
Infinite Visions	27,247
Other	9,463
Total	\$914,123

SEASIDE PROGRAM HIGHLIGHTS



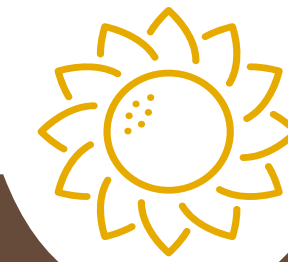
Early Intervention/Early Childhood
Special Education
**49 evaluations were conducted and 62
babies/children received services.**



Autism Services
**17 students supported via consultation,
evaluation, professional learning and
other forms of support for schools and
their special education teams.**



ORVED
**5 ORVED virtual courses taken by
Seaside students.**



Migrant Education Program
**5 Seaside SD students whose families
migrate frequently for work received
academic and social support.**



Deaf/Hard of Hearing
**2 students who are deaf or hard of
hearing received services that helped
them fully access instruction.**



Outdoor Science School
**135 students were offered Outdoor
School via Comprehensive Distance
Learning.**



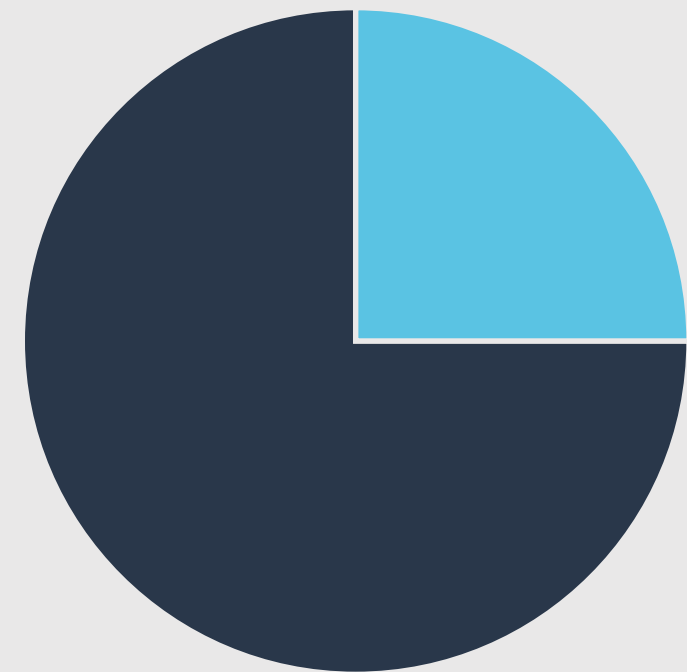
Medicaid Administrative Claiming
**\$102,949 in district funds recovered
through Medicaid claiming.**



Grant Funding Awarded
**\$472,040 total grant funding awarded
thanks to our grant writer, including
\$59,607 proportional benefit from
regional grants and \$412,433 in direct
funding for Seaside.**

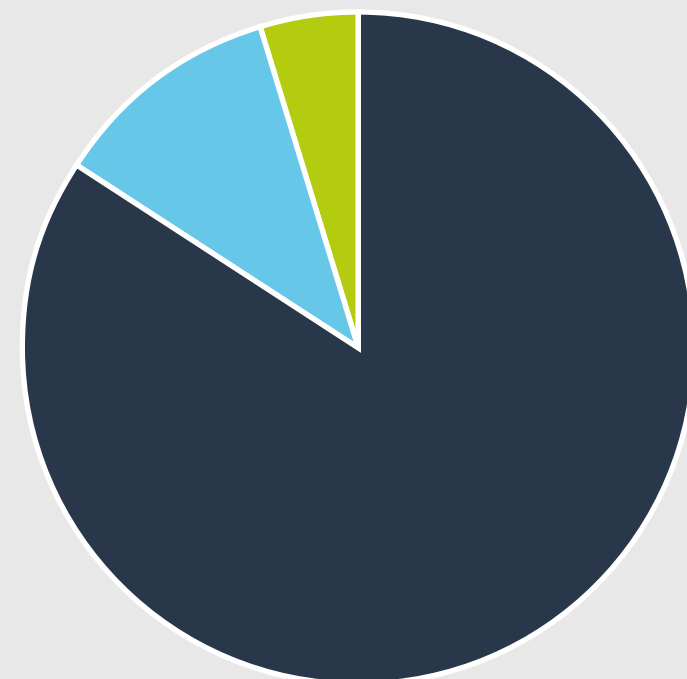
DISTRICT PROFILE: SHERWOOD

LOCAL SERVICE PLAN RESOURCES



- **Service Credits** - \$1,661,713
- **Core Services** - \$553,904

SERVICE CREDIT SPENDING BY SERVICE AREA



- **Special Education** - \$1,280,190
- **Instruction** - \$168,515
- **Technology** - \$69,583

SUMMARY OF SERVICES PURCHASED FROM THE LOCAL SERVICE PLAN MENU

Instructional Services Total	\$168,515
Outdoor School	112,520
Northwest Promise	29,095
Diverse Educator Pathways Program	22,400
Preschool Research Project	4,500
Special Education Services Total	\$1,280,190
Student Programs/Classrooms	702,332
Staffing Services	501,354
Other	76,504
Technology Services Total	\$69,583
Infinite Visions	51,304
Regional Data Warehouse	13,805
Other	4,474
Total	\$1,518,288

SHERWOOD PROGRAM HIGHLIGHTS

Early Intervention/Early Childhood Special Education

62 evaluations were conducted and 110 babies/children received services.

Special Student Services

79 students supported by our autism team, 6 by our deaf/hard of hearing team, 2 by our vision team, and 1 by our orthopedic team.

Social Emotional Learning

8 Sherwood students attended our social emotional learning schools.

Diverse Educator Pathways

1 classified employee, 1 community member and 4 high school students who aspire to teach were coached and supported through the Diverse Educator Pathways program.

Northwest Promise

\$129,355 in tuition cost savings thanks to college credits offered to high school students.

Medicaid Administrative Claiming

\$7,242 in district funds recovered through Medicaid claiming.

Migrant Education Program

10 Sherwood SD students whose families migrate frequently for work received academic and social support.

Grant Funding Awarded

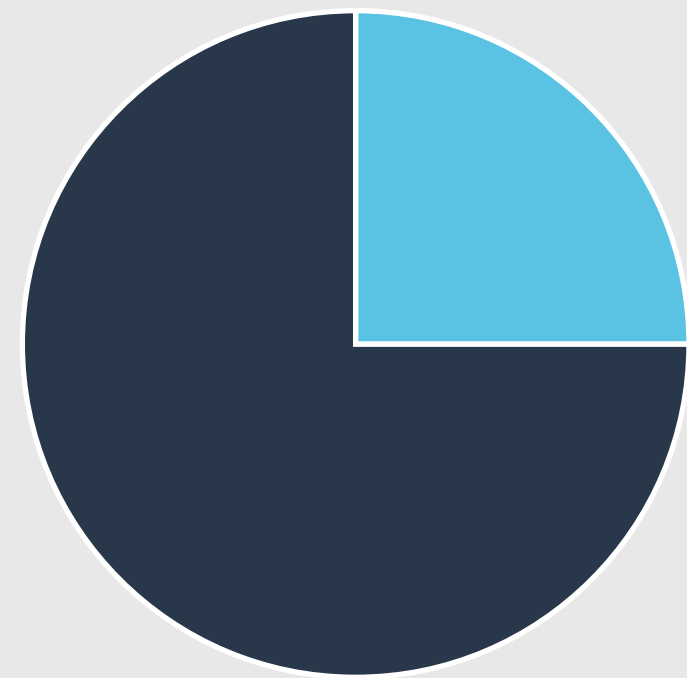
Sherwood SD benefited from a \$194,717 proportional benefit from regional competitive grants sought by NWRESD.

Outdoor Science School

388 students were offered Outdoor School via Comprehensive Distance Learning.

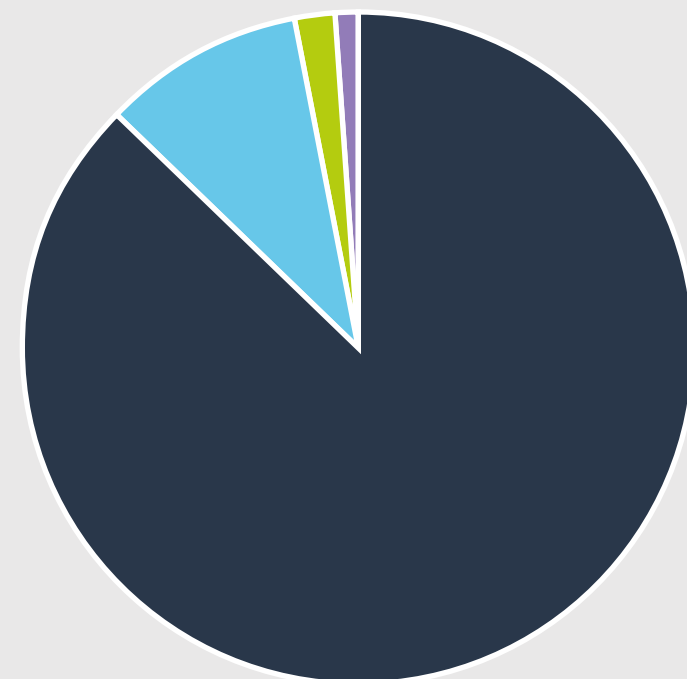
DISTRICT PROFILE: ST. HELENS

LOCAL SERVICE PLAN RESOURCES



- **Service Credits** - \$951,295
- **Core Services** - \$317,098

SERVICE CREDIT SPENDING BY SERVICE AREA



- **Special Education** - \$1,019,363
- **Technology** - \$112,761
- **Instruction** - \$21,823
- **Administrative** - \$11,366

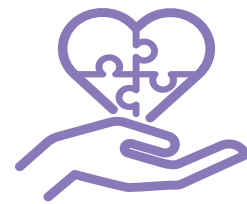
SUMMARY OF SERVICES PURCHASED FROM THE LOCAL SERVICE PLAN MENU

Administrative Services Total	\$11,366
Substitute Services	11,366
Instructional Services Total	\$21,823
Northwest Promise	13,123
Ion MTSS Software	8,700
Special Education Services Total	\$1,019,363
Staffing Services	926,688
EI/ECSE Evaluations	92,489
FM Rentals	186
Technology Services Total	\$112,761
Distance Learning Technology	53,523
Infinite Visions	38,790
Public School Works	7,768
Other	12,680
Total	\$1,165,313

ST. HELENS PROGRAM HIGHLIGHTS



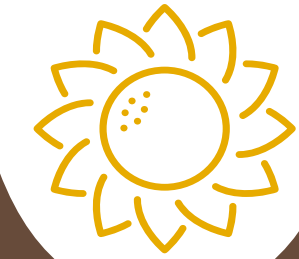
Early Intervention/Early Childhood
Special Education
**84 evaluations were conducted and
145 babies/children received services.**



Special Student Services
**51 students supported by our autism
team, 5 by our orthopedic team, 5 by
our deaf/hard of hearing team and 1 by
our vision team.**



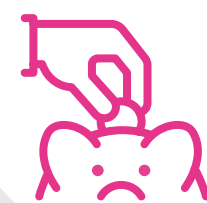
Grant Funding Awarded
**\$735,043 total grant funding awarded
thanks to our grant writer, including
\$107,293 proportional benefit from
regional grants and \$627,750 in direct
funding for St. Helens.**



Migrant Education Program
**7 St. Helens SD students whose
families migrate frequently for work
received academic and social support.**



Substitute Services
617 sub requests filled.



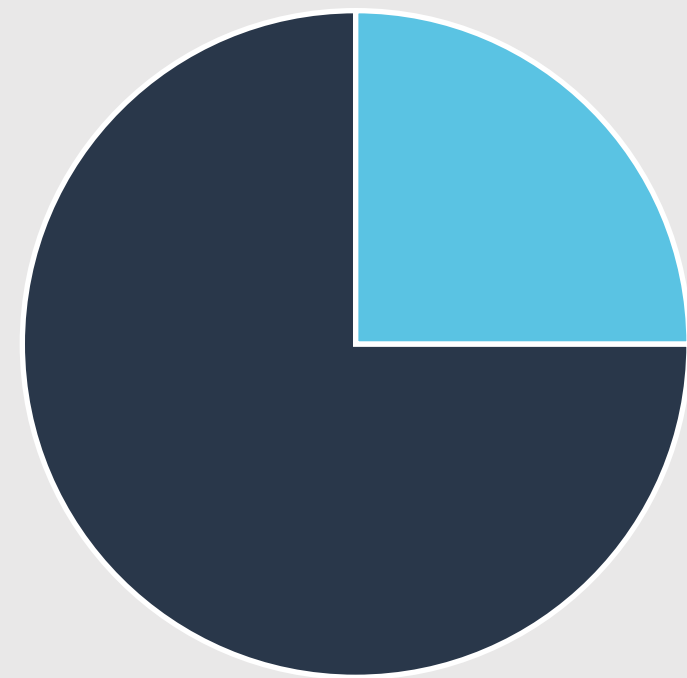
Northwest Promise
**\$16,400 in tuition cost savings thanks
to college credits offered to high
school students.**



Medicaid Administrative Claiming
**\$22,382 in district funds recovered
through Medicaid claiming.**

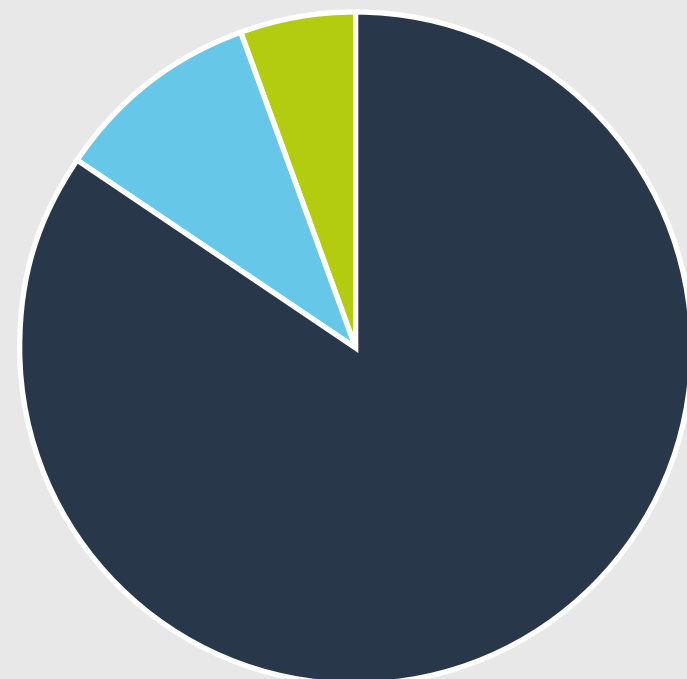
DISTRICT PROFILE: TIGARD-TUALATIN

LOCAL SERVICE PLAN RESOURCES



- **Service Credits** - \$4,129,386
- **Core Services** - \$1,376,462

SERVICE CREDIT SPENDING BY SERVICE AREA



- **Special Education** - \$3,351,413
- **Technology** - \$392,872
- **Instruction** - \$214,946

SUMMARY OF SERVICES PURCHASED FROM THE LOCAL SERVICE PLAN MENU

Instructional Services Total	\$214,946
Cascade Education Corps	80,500
Northwest Promise	62,493
Ion MTSS Software	37,500
Diverse Educator Pathways Program	22,400
Preschool Research Project	9,500
Attendance Services	2,553
Special Education Services Total	\$3,351,413
Staffing Services	1,966,662
Student Programs/Classrooms	1,107,218
Other	277,533
Technology Services Total	\$392,872
Infinite Visions	160,199
Technology Support	94,564
District Technology Purchasing	57,543
Synergy/Synergy Applications	43,157
Other	37,409
Total	\$3,959,231

Early Intervention/Early Childhood Special Education

237 evaluations were conducted and 375 babies/children received services.

Special Student Services

219 students supported by our autism team, 28 by our deaf/hard of hearing team, 20 by our orthopedic team and 17 by our vision team.

Social Emotional Learning

8 TTSD students attended our social emotional learning schools.

Diverse Educator Pathways

11 classified employees and 4 high school students who aspire to teach were coached and supported through the Diverse Educator Pathways program.



Northwest Promise

\$247,640 in tuition cost savings thanks to college credits offered to high school students.

Medicaid Administrative Claiming

\$84,488 in district funds recovered through Medicaid claiming.

Migrant Education Program

38 TTSD students whose families migrate frequently for work received academic and social support.

Grant Funding Awarded

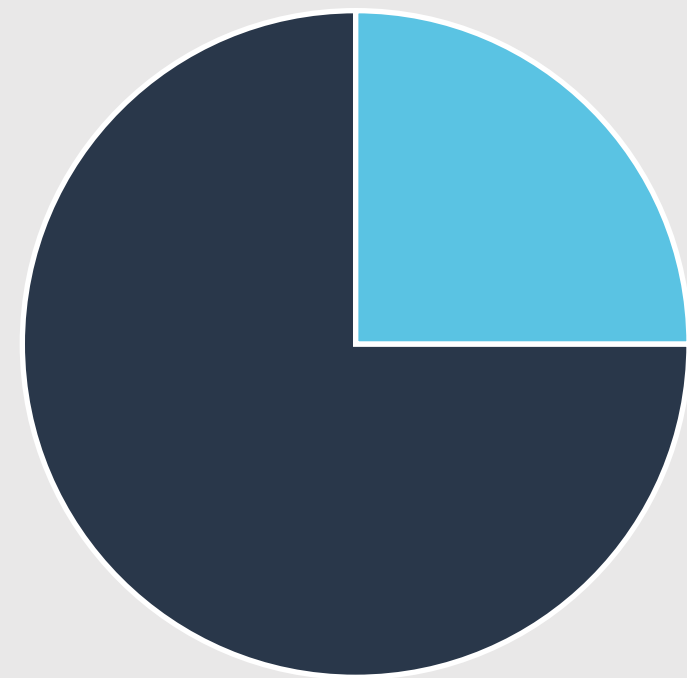
Tigard-Tualatin SD benefited from a \$480,833 proportional benefit from regional competitive grants sought by NWRESA.

Deaf/Hard of Hearing

4 students who are deaf or hard of hearing attended our program based at Groner Elementary.

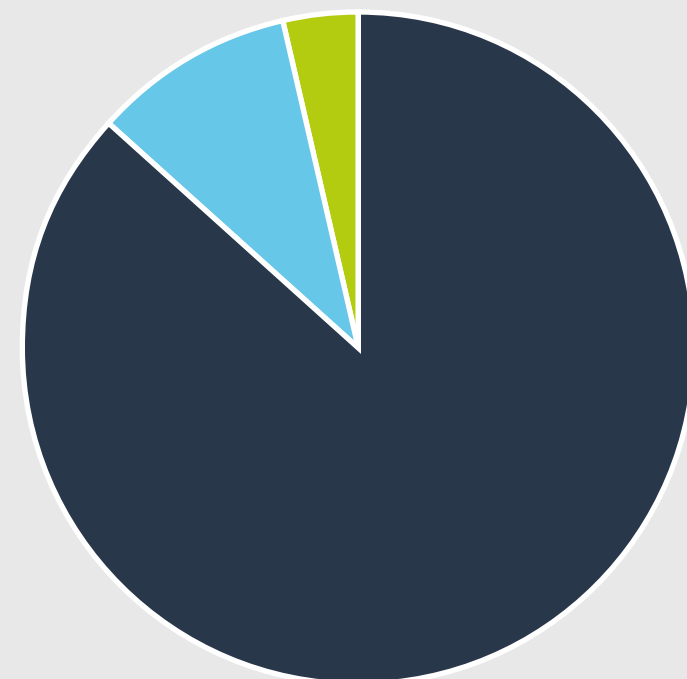
DISTRICT PROFILE: TILLAMOOK

LOCAL SERVICE PLAN RESOURCES



- **Service Credits** - \$749,758
- **Core Services** - \$249,919

SERVICE CREDIT SPENDING BY SERVICE AREA



- **Special Education** - \$635,296
- **Technology** - \$69,506
- **Instruction** - \$26,340

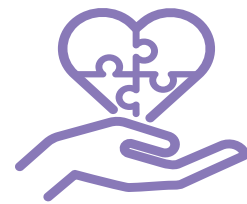
SUMMARY OF SERVICES PURCHASED FROM THE LOCAL SERVICE PLAN MENU

Instructional Services Total	\$26,340
Tillamook Education Consortium	15,000
Northwest Promise	11,340
Special Education Services Total	\$635,296
Staffing Services	583,033
EI/ECSE Evaluations	51,209
FM Rentals	1,054
Technology Services Total	\$69,506
Distance Learning Technology	62,687
Regional Data Warehouse	5,974
Other	845
Total	\$731,142

TILLAMOOK PROGRAM HIGHLIGHTS



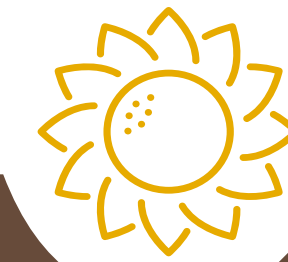
Early Intervention/Early Childhood
Special Education
44 evaluations were conducted and 78 babies/children received services.



Special Student Services
46 students supported by our autism team, 7 by our orthopedic team, 4 by our deaf/hard of hearing team, 3 by our vision team, 1 by our traumatic brain injury team, 1 by our deafblind team.



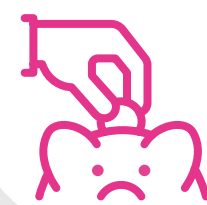
ORVED
1 ORVED virtual course taken.



Migrant Education Program
22 Tillamook SD students whose families migrate frequently for work received academic and social support.



Medicaid Administrative Claiming
\$214,266 in district funds recovered through Medicaid claiming.



Northwest Promise
\$35,260 in tuition cost savings thanks to college credits offered to high school students.



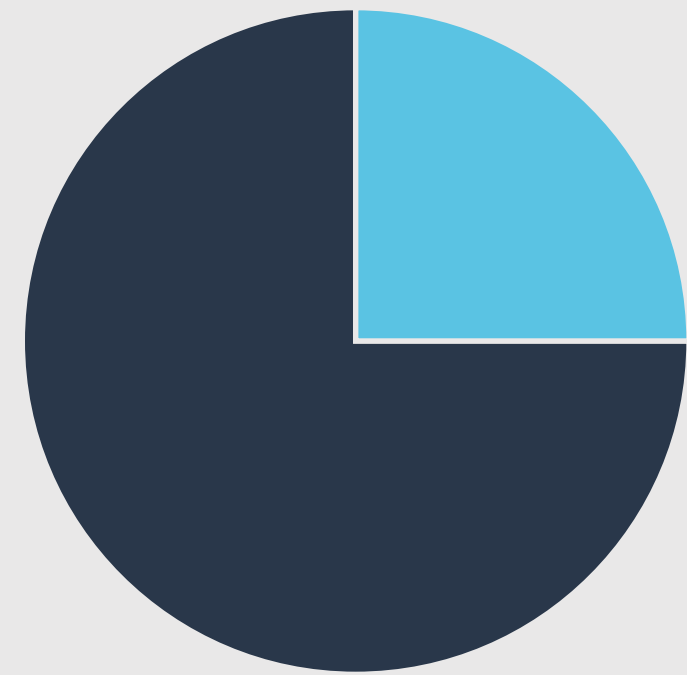
Diverse Educator Pathways
11 aspiring teachers coached and supported through the Diverse Educator Pathways program, including 3 high school students, 6 classified employees and 2 community members.



Grant Funding Awarded
\$479,200 total grant funding awarded thanks to our grant writer, including \$83,450 proportional benefit from regional grants and \$395,750 in direct funding for Tillamook.

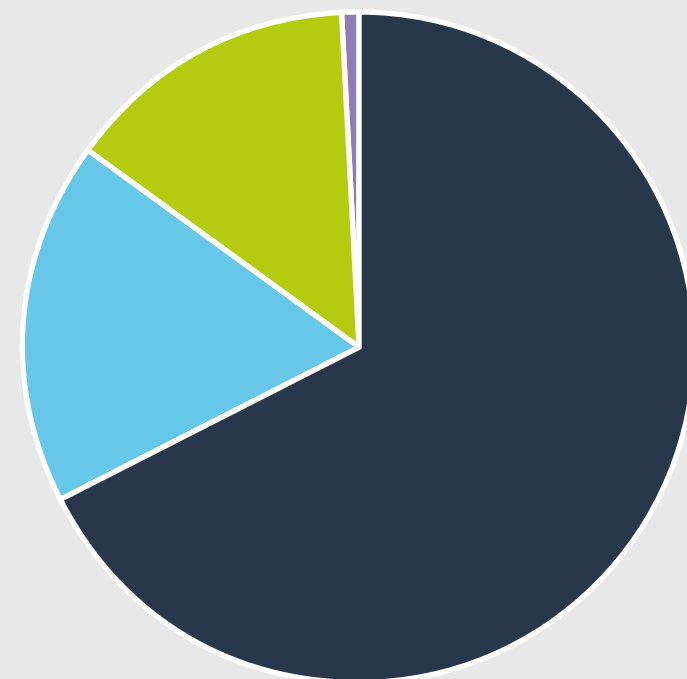
DISTRICT PROFILE: VERNONIA

LOCAL SERVICE PLAN RESOURCES



- **Service Credits** - \$211,291
- **Core Services** - \$70,430

SERVICE CREDIT SPENDING BY SERVICE AREA



- **Special Education** - \$342,144
- **Technology** - \$88,966
- **Administrative** - \$72,086
- **Instruction** - \$3,253

SUMMARY OF SERVICES PURCHASED FROM THE LOCAL SERVICE PLAN MENU

Administrative Services Total	\$72,086
Business Services	72,086
Instructional Services Total	\$3,253
Northwest Promise	3,253
Special Education Services Total	\$342,144
Staffing Services	222,824
Student Programs/Classrooms	103,864
EI/ECSE Evaluations	15,456
Technology Services Total	\$88,966
Technology Support	27,950
Technology Purchases	19,978
Distance Learning Technology	18,955
Infinite Visions	16,772
Other	5,311
Total	\$506,449

VERNONIA PROGRAM HIGHLIGHTS



Grant Funding Awarded

\$139,869 total grant funding awarded thanks to our grant writer, including \$19,869 proportional benefit from regional grants and \$120,000 in direct funding for Vernonia.



Social Emotional Learning

2 Vernonia students attend our social emotional learning schools.



Early Intervention/Early Childhood Special Education

12 evaluations were conducted and 28 babies/children received services.



Special Student Services

11 students supported by our autism team, 1 by our orthopedic team, 1 by our deaf/hard of hearing team.



Substitute Services

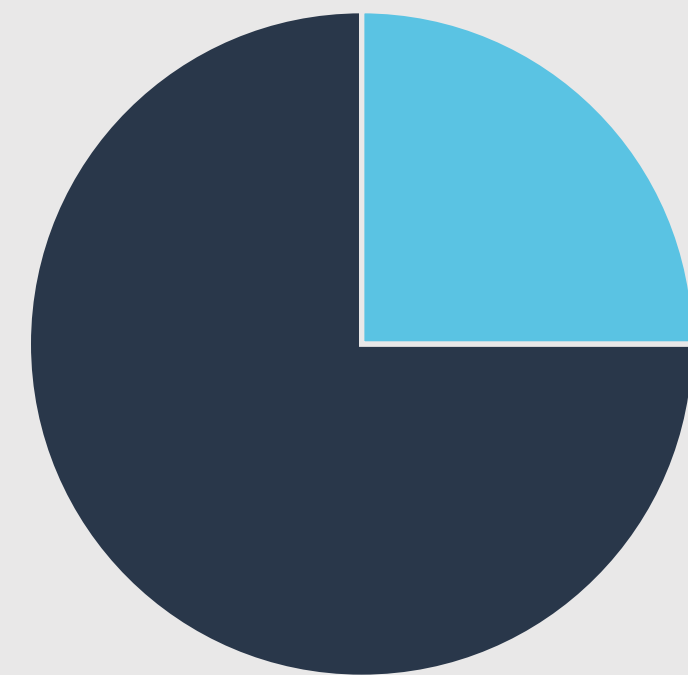
136 sub requests filled.



Medicaid Administrative Claiming \$80,338 in district funds recovered through Medicaid claiming.

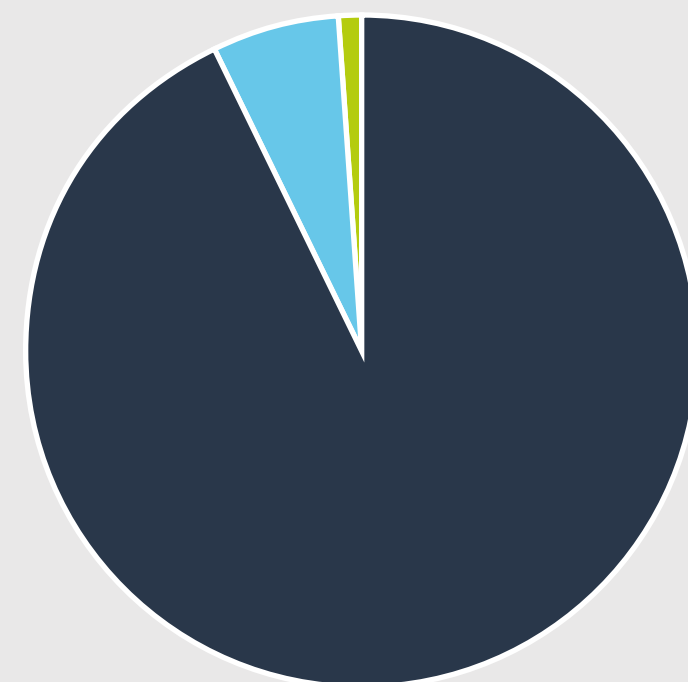
DISTRICT PROFILE: WARRENTON-HAMMOND

LOCAL SERVICE PLAN RESOURCES



- **Service Credits** - \$348,044
- **Core Services** - \$116,015

SERVICE CREDIT SPENDING BY SERVICE AREA



- **Special Education** - \$604,000
- **Technology** - \$39,873
- **Instruction** - \$6,371

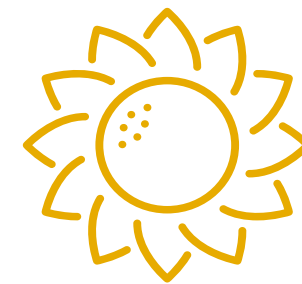
SUMMARY OF SERVICES PURCHASED FROM THE LOCAL SERVICE PLAN MENU

Instructional Services Total	\$6,371
Northwest Promise	4,991
Attendance	1,380
Special Education Services Total	\$604,000
Staffing Services	556,386
EI/ECSE Evaluations	38,069
Other	9,545
Technology Services Total	\$39,873
Infinite Visions	20,689
Technology Support	10,000
Other	9,184
Total	\$650,244

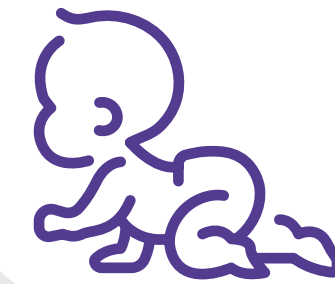
WARRENTON-HAMMOND PROGRAM HIGHLIGHTS



Grant Funding Awarded
Warrenton-Hammond benefited from a \$39,738 proportional benefit from regional competitive grants sought by NWRESD.



Migrant Education Program
50 students whose families migrate frequently for work received academic and social support.



Early Intervention/Early Childhood
Special Education
64 evaluations were conducted and 45 babies/children received services.



Special Student Services
28 students were supported by our autism team, 2 by our traumatic brain injury team, 1 by our deaf/hard of hearing team, 1 by our orthopedic team and 1 by our vision team.



Medicaid Administrative Claiming
\$116,047 in district funds recovered through Medicaid claiming.



LOCAL SERVICE PLAN

2022-23 FISCAL YEAR

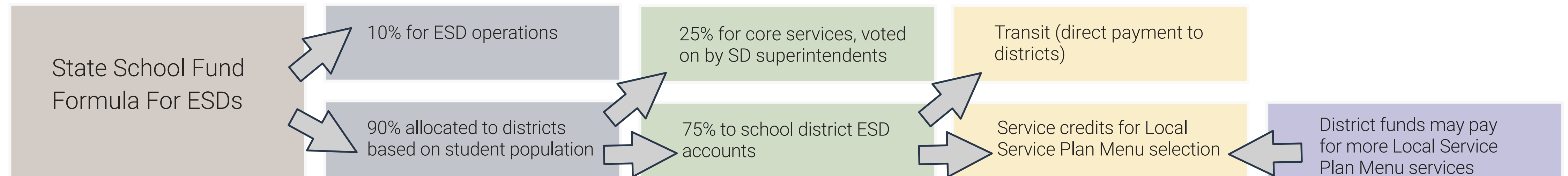
ABOUT THE LOCAL SERVICE PLAN

According to the Oregon State Legislature, “The mission of education service districts is to assist school districts and the Department of Education in achieving Oregon’s educational goals by providing equitable, high-quality, cost-effective and locally responsive educational services at a regional level.” Toward that end, we work with component school districts annually to develop next school year’s Local Service Plan. The Local Service Plan must address four areas as outlined in ORS 334.175: Special

Education, Technology, Instruction (referred to as school improvement in ORS), Administration. The plan also has three major components: 1) **Core services** are shared among school districts; 2) **Menu services** are available for individual districts to purchase with service credits or through other funding sources; 3) the **Student Success Act plan**, as required by HB 3427 Section 25, defines our role to support districts make progress toward the goals of the Student Success Act.

FUNDING FLOW

The Local Service Plan is funded through the State School Fund (SSF) and local property taxes.



TIMELINE FOR DEVELOPMENT AND APPROVAL

School district superintendents, NWRESD’s board of directors, and the 20 regional school boards approve the Local Service Plan (LSP) according to the following timeline.

Sept. to Nov. 2021

NWRESD co-developed the LSP with school district superintendents. Superintendents unanimously voted to approve the plan on Nov. 5, 2021.

Dec. 2021

NWRESD’s Board of Directors took formal action on the LSP at the Dec. 14, 2021, meeting.

Jan. to Feb. 2022

Component school districts take formal action on the LSP. Per ORS 334.175, the plan must be approved by March 1.

Feb. to June 2022

NWRESD staff and school district staff determine cost of services and complete service credit worksheets.

July 2022

2022-23 LSP goes into effect.

LOCAL SERVICE PLAN - CORE

PROJECTED CORE SERVICES BUDGET

PROGRAM	2021-22 ADOPTED BUDGET	2022-23 PROJECTED BUDGET
Instructional Services		
Professional Development Strands BSD + HSD	\$355,011	\$368,880
Professional Development Strands CORE Districts	239,961	250,417
ESD Transfer to Instructional Services for Core	180,644	68,050
Attendance Services	-	120,000
Regional Innovations Fund BSD + HSD	634,219	660,222
<i>Total Instructional Services</i>	<i>\$1,409,835</i>	<i>\$1,467,570</i>
Technology		
Network/Security Services	\$348,323	\$412,604
Help Desk	118,658	123,523
Application Support/Development	541,440	513,639
Technical Engineering Coop	451,458	469,968
Student Information System	865,609	901,099
Library Services	173,204	180,305
<i>Total Technology Services</i>	<i>\$2,498,692</i>	<i>\$2,601,138</i>
Miscellaneous		
Home School	\$15,000	\$15,615
Emergency Closure Network	10,500	10,931
County Allocations	1,686,842	1,768,430
Total Miscellaneous Services	\$1,712,342	\$1,794,976
<i>Total Core Services</i>	<i>\$5,620,869</i>	<i>\$5,863,684</i>

TOTAL CORE SERVICES

Core Services - 18 Districts	\$4,834,582
Beaverton SD/Hillsboro SD	1,029,102
<i>Total Core Services</i>	<i>\$5,863,684</i>

PROJECTED COUNTY ALLOCATIONS

School district superintendents in their respective counties decide together how to use county allocations.

Total Available for Allocation	\$1,768,430
Base per county (\$125,000x 4)	500,000
Available by ADMw	\$1,268,430

COUNTY	DISTRICT	RESOLUTION PLAN ADMW WITH GROWTH	COUNTY BASE	ALLOCATION OUTSIDE OF BASE	TOTAL 2022-23 ALLOCATION PER COUNTY	TOTAL 2021-22 ALLOCATION PER COUNTY	INCREASE
Clatsop	Astoria	2,205.7					
	Jewell	302.9					
	Knappa	668.0					
	Seaside	1,981.0					
	Warrenton-Hammond	1,255.7					
	Total	6,413.1	\$125,000	\$162,655	\$287,655	\$276,873	\$10,782
Columbia	Clatskanie	946.2					
	Rainier	1,073.0					
	Scappoose	2,798.8					
	St. Helens	3,348.4					
	Vernonia	781.8					
	Total	8,948.1	\$125,000	\$226,949	\$351,949	\$337,317	\$14,632
Tillamook	Neah-Kah-Nie	1,035.5					
	Nestucca Valley	684.7					
	Tillamook	2,692.0					
	Total	4,412.2	\$125,000	\$111,905	\$236,905	\$229,783	\$ 7,122
Washington	Banks	1,296.4					
	Forest Grove	7,502.8					
	Gaston	748.1					
	Sherwood	5,991.3					
	Tigard-Tualatin	14,699.3					
	Total	30,238.0	\$125,000	\$766,920	\$891,920	\$842,869	\$49,051
	TOTAL	50,011.4	\$500,000	\$1,268,430	\$1,768,430	\$1,686,842	\$81,588

LOCAL SERVICE PLAN - MENU

TOTAL PROJECTED SERVICE CREDITS

School districts receive service credits that they may use to select and purchase services specific to their school district. They may also choose to purchase services above and beyond what is allocated. This section includes information about projected allocations and the menu of available services for purchase in the 2022-23 school year.

	2022-23 PROJECTED \$9.3B	2021-22 SSF ESTIMATE 6/24/21	DIFFERENCE
Est. SSF Allocation	\$53,138,745	\$51,054,873	\$2,083,872
ESD Operations at 10%	5,313,875	5,105,487	208,387
Local Service Plan at 90%	47,824,870	45,949,386	1,875,484
Beaverton (39.49%)	18,885,226	18,232,680	652,546
Hillsboro (20.08%)	9,601,317	9,176,461	424,856
Amount Available for 18 Districts	19,338,327	18,540,245	798,082
Core (25% of Local Service Plan)	4,834,582	4,635,061	199,521
Menu/Service Credits (75% of Local Service Plan)	\$14,503,745	\$13,905,183	\$598,561

PROJECTED SERVICE CREDITS BY SCHOOL DISTRICT

COUNTY	DISTRICT	ODE REPORT 5/1/2021 2019-20 EX. ADMW	ODE REPORT 5/1/2021 2020-21 EX. ADMW	GROWTH	LSP ADMW WITH GROWTH	% OF TOTAL	EST. 2022-23 SERVICE CREDIT ALLOCATION	AMOUNT PER ADMW	2021-22 SSF EST. SERVICE CREDIT ALLOCATION	DIFFERENCE
Clatsop	Astoria	2,205.66	2,197.91	(7.8)	2,205.66	4.41%	\$639,661	\$290.01	\$613,998	\$25,663
	Jewell	302.9	302.90	-	302.90	0.61%	\$87,844	\$290.01	\$83,070	\$4,774
	Knappa	667.96	667.96	-	667.96	1.34%	\$193,714	\$290.01	\$185,622	\$8,092
	Seaside	1,980.96	1,953.35	(27.6)	1,980.96	3.96%	\$574,496	\$290.01	\$557,454	\$17,042
	W.-Hammond	1,255.65	1,255.65	-	1,255.65	2.51%	\$364,150	\$290.01	\$348,043	\$16,107
Columbia	Clatskanie	946.17	923.50	(22.7)	946.17	1.89%	\$274,398	\$290.01	\$268,810	\$5,588
	Rainier	1,073.02	1,026.74	(46.3)	1,073.02	2.15%	\$311,185	\$290.01	\$293,349	\$17,836
	Scappoose	2,798.76	2,781.89	(16.9)	2,798.76	5.60%	\$811,666	\$290.01	\$785,034	\$26,632
	St. Helens	3,348.35	3,259.52	(88.8)	3,348.35	6.70%	\$971,052	\$290.01	\$951,295	\$19,757
	Vernonia	781.8	781.80	-	781.80	1.56%	\$226,729	\$290.01	\$211,291	\$15,438
Tillamook	Neah-Kah-Nie	1,035.54	1,035.54	-	1,035.54	2.07%	\$300,316	\$290.01	\$288,464	\$11,852
	Nestucca Valley	684.65	676.78	(7.9)	684.65	1.37%	\$198,555	\$290.01	\$193,385	\$5,170
	Tillamook	2,691.98	2,691.98	-	2,691.98	5.38%	\$780,698	\$290.01	\$749,758	\$30,940
Washington	Banks	1,296.43	1,296.43	-	1,296.43	2.59%	\$375,976	\$290.01	\$359,240	\$16,736
	Forest Grove	7,502.83	7,502.83	-	7,502.83	15.00%	\$2,175,888	\$290.01	\$2,088,817	\$87,071
	Gaston	748.12	708.32	(39.8)	748.12	1.50%	\$216,962	\$290.01	\$211,841	\$5,121
	Sherwood	5,991.3	5,931.18	(60.1)	5,991.30	11.98%	\$1,737,531	\$290.01	\$1,661,713	\$75,818
	Tigard-Tualatin	14,699.28	14,699.28	-	14,699.28	29.39%	\$4,262,924	\$290.01	\$4,129,385	\$133,539
TOTAL		50,011.36	49,693.56	(317.8)	50,011.36	100.00%	\$14,503,745		\$13,980,569	\$523,176

Assumptions: \$9.3B in SSF Formula. Enrollment stable. Year 2 of Biennium allocated at 51%.

ADMINISTRATION



Spotlight on Administrative Services: Regional Schools Receive More Than \$1 Million in Medicaid Administrative Claiming Reimbursements

Many Oregon families are unaware their children could receive free health care through the Oregon Health Plan. This has been especially true since the start of the pandemic.

That's where schools come in. Teachers and school staff know which families might qualify and benefit from the Oregon Health Plan, the state-sponsored Medicaid program that provides free health care for Oregonians who meet certain income requirements.

In Oregon, school districts that encourage their educators to help families enroll their children in the Oregon Health Plan are eligible for reimbursement through the Medicaid Administrative Claiming program. Time spent helping children and their families access these services is also reimbursable.

Northwest Regional ESD's Medicaid team has helped school district staff navigate the often cumbersome task of reporting this data to the federal government since 2006. This past school year, 13 of the 20 districts in NWRESA's service area participated in the program. Reimbursements totaled just over \$1 million during the 2020-21 school year.

Brenda Van Domelen, a nurse who helps coordinate the Medicaid Administrative Claiming work for Scappoose School District, says the benefits are two-fold: "The funds brought to the district are spent on services to kids and the program itself encourages staff to reach out to families with information about the Oregon Health Plan."

[Read the full story.](#)



COMPLETE LIST OF ADMINISTRATIVE SERVICES

- Business Services
- Cascade Alliance for Equity
- Communications
- Emergency Closure Network
- Equity and Family Partnerships
- Medicaid Reimbursements
- Spanish Language Interpretation and Translation

[Read more detail about these services and learn how to add them to the list of services your district receives.](#)

INSTRUCTION



Students in the Migrant Education Program attend an art camp in Astoria during the summer of 2021. Photo by Kelsey Cardwell.



Spotlight on Instructional Services: Columbia County Student Advocates for More STEM-Related Opportunities for Youth

Northwest Regional ESD's STEM Hub teamed up with Oregon Manufacturing Innovation Center Research & Development (OMIC R&D), Portland Community College and Scappoose High School in 2020 to provide internships for Columbia County students through the Columbia Works program. In March of 2021, Scappoose High School senior Anika Havlik, a summer intern at OMIC R&D through Columbia Works, testified in support of House Bill 2092 to fund more similar opportunities.

Anika, who participated via Zoom, said her experience as an intern at OMIC R&D introduced her to virtual reality programming. Her main focus was to design and build a virtual reality tour of the OMIC R&D building, which is located in Scappoose. Her work included writing code, animating, 3D modeling and then compiling the components into one fluid experience.

Anika said the connections she gained during the internship helped her get a job at the Scappoose Airport and she shared that she had recently received a congressional nomination to the Air Force Academy, where she has been accepted to continue her education and training post-graduation.

"I am more confident in my ability to adapt and am better prepared to go to college and enter the workforce," she said. "My hope is that many more students my age will be able to have a similar opportunity. As one of three females represented in this internship, I especially want to encourage young women to pursue STEM-related experiences such as this." The bill passed on Sept. 25, 2021, and went into effect on Jan. 1, 2022.

[Read the full story.](#)



COMPLETE LIST OF INSTRUCTIONAL SERVICES

- Attendance Services
- Cascade Education Corps (CEC)
- Child Care Resource and Referral
- Diverse Educator Pathways
- Early Learning Hub
- English Language Learner Consortium
- Fire Science Program
- Grant Management
- Home School Notifications
- Ion MTSS Software
- Migrant Education Program (MEP)
- Northwest Promise
- Outdoor Science School
- Professional Learning
- Regional Educator Network
- Regional Innovations
- Research, Assessment and Evaluation
- School Safety and Prevention System
- STEM Hub
- Tillamook Education Consortium

[Read more detail about these services and learn how to add them to the list of services your district receives.](#)



SPECIAL EDUCATION

Spotlight on Special Education Services: Meet the Students Receiving Services



Austin Holz

Austin is a senior at Banks High School and has worked with Carissa Martos, a teacher of the deaf and hard of hearing, for five years. When Austin was asked about the most important lesson he had learned from his teacher, he said:

"I've learned a lot more words and I understand more about the stories in English and in History and see what the point of the story is and how they go together. I also learned how to get my hearing aids to work better and how to ask people to repeat stuff. We also talked about how to act when I am driving and if I get pulled over, and things I can do to stay safe when I am out hunting and tell the other hunters how to work with me."



Jemma Bosotina

Jemma is a third grader at Harvey Clarke Elementary School in Forest Grove. Carissa Martos, a NWRES D teacher of the deaf and hard of hearing, visits her every week during the school year.

Jemma's favorite memory with Ms. Carissa is when Carissa brings in a giant ear. She takes it apart and shows all of the pieces. "I wish it had a hearing aid," Jemma says.

Carissa recently challenged Jemma to find a sound she hadn't heard before. "I'm still searching for it," she says. When Carissa visits, Jemma says she likes reading books and getting stickers and candies. "I like talking with her. We talk about hearing aids. I tell her what's wrong with my hearing aids. There are buttons and she helps me figure that out."



Christian Diehl

Christian is a senior at Cascade Academy. He says his school, which provides individualized behavior support to every student, is a lot like a family.

"It's a good community," he says. "When we have troubles like when someone is having a bad day, they are really understanding about it."

He says he feels his teachers really care for him and his fellow classmates.

Every student at Cascade Academy receives support based on the needs outlined in their individualized education plan. The program uses Positive Behavior Intervention Support, Collaborative Problem Solving and Restorative Justice principles, and all of the educators put positive working relationships with students at the center of their work.



COMPLETE LIST OF SPECIAL EDUCATION SERVICES

- Augmentative and Alternative Communication and Assistive Technology
- Autism Spectrum Disorder Services
- Blind Visually Impaired (BVI) Student Services
- Deaf and Hard of Hearing Services (D/HH) and Audiology
- Early Childhood Special Education
- Early Intervention (EI)
- Early Intervention/Early Childhood Special Education (EI/ECSE) Screening and Evaluations
- Nursing Services
- Occupational Therapy (OT) Services
- Physical Therapy (PT) Services
- Regional Equipment Center
- School Psychology Services
- Social Emotional Learning Schools
- Speech-Language Pathology (SLP) Services
- Traumatic Brain Injury (TBI) Services
- Youth Transition Program (YTP)

[Read more detail about these services and learn how to add them to the list of services your district receives.](#)

TECHNOLOGY



Spotlight on Technology Services: Mist Elementary Project Paves the Way For High-Speed Internet in Oregon's Most Rural Schools

Elementary students in the remote community of Mist, located more than an hour northwest of Portland, Oregon, have access to high-speed internet thanks to the installation of SpaceX's latest Starlink technology.

Link Oregon, Northwest Regional ESD and Vernonia School District combined forces to identify funds, personnel and the technological infrastructure that brought high-speed internet to the remote school. Vernonia School District has tried multiple times over the past decade to upgrade the school to fiber-optic internet, but the high costs of running a dedicated fiber line down miles of rural roads always prevented the project from taking off. Starlink bypassed cost-prohibitive construction projects, making it an ideal solution for remote rural communities.

"Before we got the new internet, Ms. Avy's class couldn't be on the internet at the same time, so sometimes we would have to reschedule when we did reading and math," explains McKinley, a fifth grader.

McKinley says that she and her peers commonly use the internet to write stories in Google Docs and interact with Zearn, a math website with video lessons and exercises.

Northwest Regional ESD plans to identify more opportunities to expand internet access for schools and students.

[Read the full story.](#)



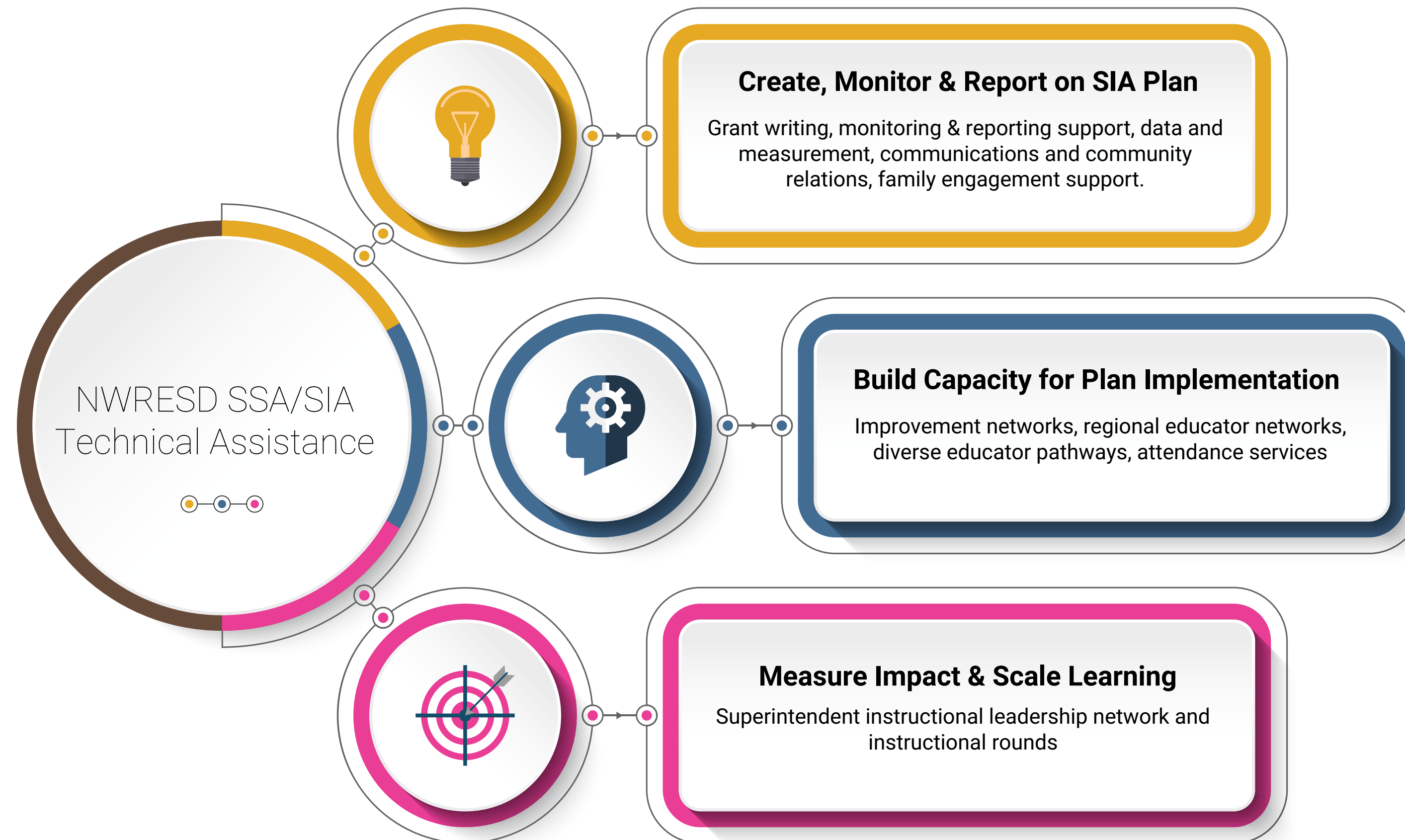
COMPLETE LIST OF TECHNOLOGY SERVICES

- Application Support
- Forecast5
- Help Desk
- Information Systems
- Library Services
- Network Services
- Oregon Virtual Education (ORVED)

- Substitute Services
- Technical Engineering Cooperative

[Read more detail about these services and learn how to add them to the list of services your district receives.](#)

STUDENT SUCCESS ACT (SSA) PLAN



SSA TECHNICAL ASSISTANCE

NWRESD provides SSA technical support by leveraging a cross-department team that brings together Instructional Services; Equity and Family Partnerships; Research, Assessment, Evaluation and Data; and Communications. The technical assistance offered supports student mental health and behavior and aims to improve academic outcomes for all students, with a focus on decreasing disparities and closing the opportunity gap for focal student groups. NWRESD supports component school districts in the implementation of their Student Investment Account (SIA) plans in three ways:

- **Creating, applying, monitoring and reporting on the (SIA)** - provide support to districts in applying for, receiving and monitoring spending of SSA funds to ensure compliance with Oregon Department of Education expectations.

- **Developing the capacity of district and school staff to implement their plans** - improve the abilities, skills, knowledge and expertise of educators and leaders to ensure implementation SIA plans toward the SSA vision are actualized through moving student outcomes.
- **Measuring impact and scaling learning across the region through collaboration** - developing and supporting superintendent collaboration and instructional practice across the region to see what students are doing and saying, and to ensure increased academic outcomes for all students, specifically students in focal groups.

These three areas of work include investments in the following areas:

- Community engagement and communications support
- Assessment and data support for longitudinal performance growth targets

- SIA plan development, monitoring, amending and reporting
- Professional learning networks aligned to district SIA plans
 - Early Literacy Network
 - 9th Grade Success Network
 - Social, Emotional, and Mental Health Network
 - Instructional Coaching Network
 - Equity and family partnerships professional learning
 - Northwest Superintendent Instructional Leadership Network
 - Chronic absenteeism reduction
 - Multi-Tiered Systems of Support and data-based decision-making
- Regional Educator Network (REN)
- Diverse Educator Pathways
- Language interpretation and translation